

NH-Sicherung, SEV G2



**Description**

- Characteristic gG
- According to IEC 269
- According to EN 60269
- Selectivity 1:1.6
- Removal tags energized
- Dimensions according to SNV 24482

**Weblinks**

[pdf-datasheet](#), [html-datasheet](#), [CE declaration of conformity](#), [RoHS](#), [REACH](#), [CAD-Drawings](#), [Detailed request for product](#)

**Technical Data**

|                                    |          |
|------------------------------------|----------|
| Rated Current In                   | 40- 250A |
| Rated Voltage                      | 500VAC   |
| Breaking Capacity                  | 120kA    |
| Rated Power Operating Frequency fe | 50Hz     |

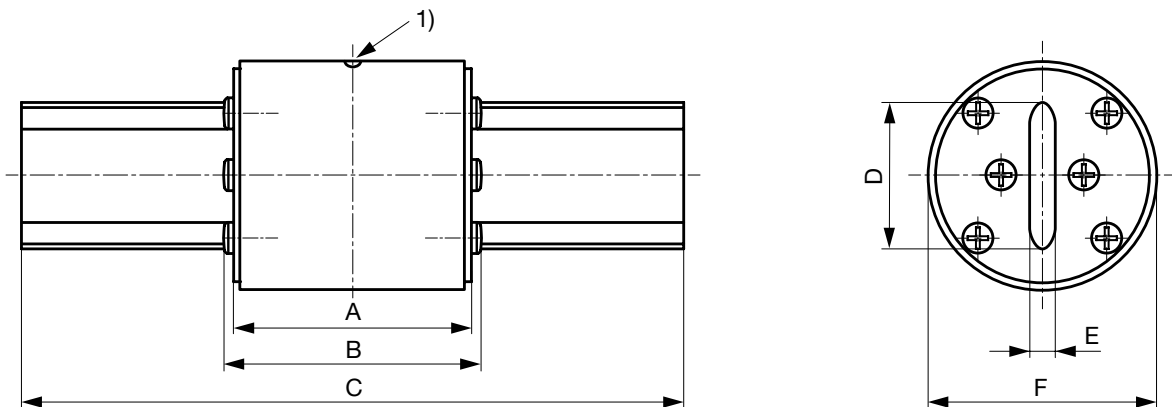
**Basic Design**

|                  |                                 |
|------------------|---------------------------------|
| Insulator        | Ceramic                         |
| Metal components | corrosion-resistant (rustproof) |

**Power Dissipation (Watt) operating temperature max.**

The power dissipation is the so called power loss at rated current load and operation temperature acc. VDE 0636 . It is to be measured in Watt at AC condition. The voltage tap is to be assured that the power dissipation of the blade contacts are included. This means the measure contact need to be applied at the ends of the blade contacts. The standard VDE 0636 part 1 and 2 requires that following maximal permissible power losses are not exceeded.

**Dimensions**

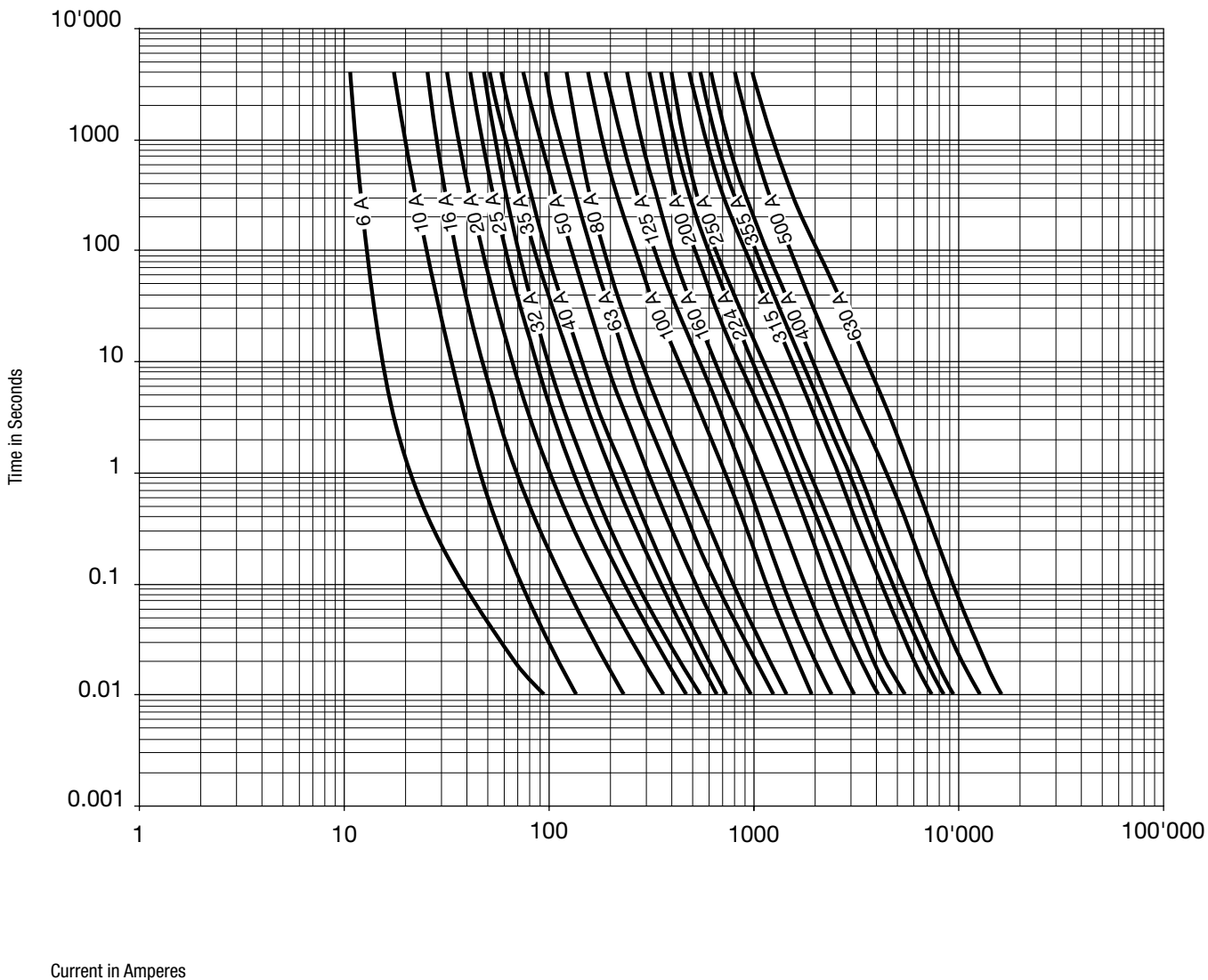


| SEV | A  | B  | C   | D  | E | F  |
|-----|----|----|-----|----|---|----|
| 2   | 53 | 58 | 134 | 25 | 5 | 45 |
| 4   | 61 | 65 | 162 | 35 | 6 | 55 |
| 6   | 66 | 70 | 188 | 42 | 8 | 70 |

1) Indicator

## Time-Current-Curves

SEV G2 - G6



### All Variants

| Rated current<br>[A] | Style<br>[Compact] | Power Loss<br>[W] | Order Number | E-No      |
|----------------------|--------------------|-------------------|--------------|-----------|
| 40                   | -                  | -                 | 1301.2201    | 840110149 |
| 50                   | -                  | -                 | 1301.2202    | 840110159 |
| 63                   | -                  | -                 | 1301.2203    | 840110179 |
| 80                   | -                  | -                 | 1301.2204    | 840110199 |
| 100                  | -                  | -                 | 1301.2205    | 840110209 |
| 125                  | -                  | -                 | 1301.2206    | 840110219 |
| 160                  | -                  | -                 | 1301.2207    | 840110239 |
| 200                  | -                  | -                 | 1301.2208    | 840110249 |
| 250                  | -                  | -                 | 1301.2209    | 840110269 |

Most Popular.

---

| Rated current | Style     | Power Loss | Order Number | E-No |
|---------------|-----------|------------|--------------|------|
| [A]           | [Compact] | [W]        |              |      |

---

Availability for all products can be searched real-time:<http://www.schurter.com/Stock-Check/Stock-Check-SCHURTER>

---