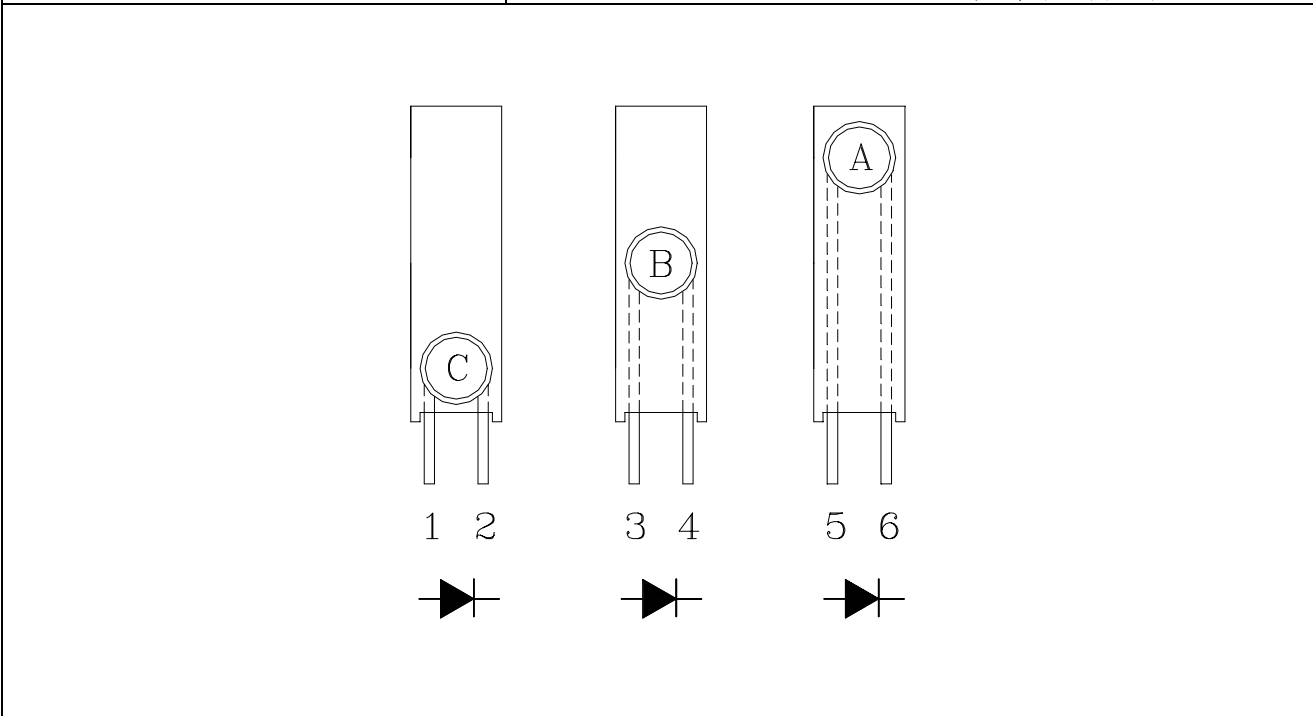
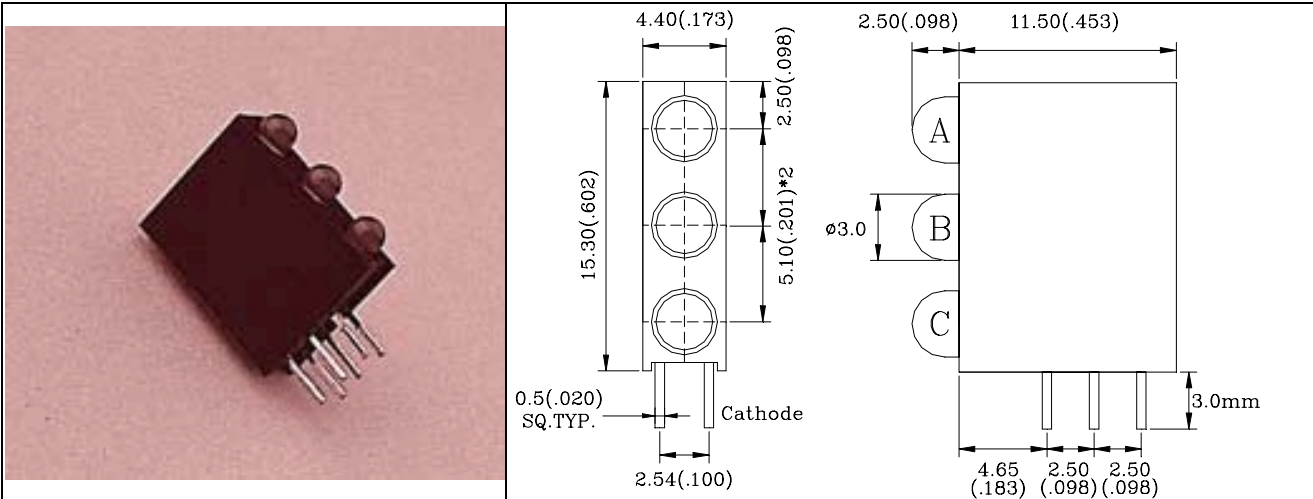




**L-H331XXXX 3.0mm Dia LED LAMP, WITH H330 HOLDER**



| Part No.   | LED LAMP   | Lens Color      | Chip Raw Material | Wave Length $\lambda$ p(nm) | Electro-Optical Characteristics |      |             | View Angle (deg) |
|------------|------------|-----------------|-------------------|-----------------------------|---------------------------------|------|-------------|------------------|
|            |            |                 |                   |                             | Vf(V)20mA                       |      | Iv(mcd)10mA |                  |
|            |            |                 |                   |                             | Typ.                            | Max. | Typ.        |                  |
| L-H331005B | A =L3541GD | Green Diffused  | GaP               | 565                         | 2.1                             | 2.8  | 12.5        | 60               |
|            | B =L3541GD | Green Diffused  | GaP               | 565                         | 2.1                             | 2.8  | 12.5        | 60               |
|            | C =L3541GD | Green Diffused  | GaP               | 565                         | 2.1                             | 2.8  | 12.5        | 60               |
| L-H331006B | A =L3541YD | Yellow Diffused | GaAsP/GaP         | 585                         | 2.1                             | 2.8  | 12.5        | 60               |
|            | B =L3541YD | Yellow Diffused | GaAsP/GaP         | 585                         | 2.1                             | 2.8  | 12.5        | 60               |
|            | C =L3541YD | Yellow Diffused | GaAsP/GaP         | 585                         | 2.1                             | 2.8  | 12.5        | 60               |
| L-H331007B | A =L3541HD | Red Diffused    | GaP               | 700                         | 2.1                             | 2.8  | 5.0         | 60               |
|            | B =L3541HD | Red Diffused    | GaP               | 700                         | 2.1                             | 2.8  | 5.0         | 60               |
|            | C =L3541HD | Red Diffused    | GaP               | 700                         | 2.1                             | 2.8  | 5.0         | 60               |
| L-H331008B | A =L3541ED | Red Diffused    | GaAsP/GaP         | 635                         | 2.0                             | 2.8  | 20.0        | 60               |
|            | B =L3541ED | Red Diffused    | GaAsP/GaP         | 635                         | 2.0                             | 2.8  | 20.0        | 60               |
|            | C =L3541ED | Red Diffused    | GaAsP/GaP         | 635                         | 2.0                             | 2.8  | 20.0        | 60               |

- 1.All dimension are in millimeters (inches).
- 2.Tolerance is  $\pm 0.25$  mm (0.01") unless otherwise specified.