

ATLANTIC VERSION TERMINATOR INTERFACE ADAPTER	PART NUMBER	REVISION	DESCRIPTION	FEED TYPE	APPLICATOR STYLE CONVERSION CHART							
					CONVERT TO	PART NUMBERS REQUIRED						
	2151032-2	D	FINE CRIMP HEIGHT ADJUST	PNEUMATIC	-	-	1338685-1	5-18022-5	-	-	-	
	2151032-5	D	FINE CRIMP HEIGHT ADJUST	SERVO LATCH PLATE ⁴	SERVO LATCH PLATE	2119951-1	2161540-1	8-2151032-5	1901094-3	1976043-1	2168400-6 (QUANTITY 2)	
	2151032-6	D	NON-CRIMP HEIGHT ADJUST	SERVO LATCH PLATE ⁴	PNEUMATIC FEED	2119950-1	1338685-1	5-18022-5	2119641-1	2119799-1	2063440-1	
	2151032-7	D	FINE CRIMP HEIGHT ADJUST	NONE	-	-	-	-	-	-	-	
	7-2151032-7	A	CRIMP TOOLING KIT	-	-	-	-	-	-	-	-	

APPLICATOR DATA		
CRIMP	SIZE	TYPE
WIRE	.205 [5.2] mm	Ø
INSUL	.000 [0.00 mm]	-
APPLICATOR INSTRUCTIONS 408-10389		

TERMINAL DATA: TE TERMINAL		TE CRIMP SPECIFICATION	
TERMINAL NAME: FULLY INSULATED FASTON			
WIRE STRIP LENGTH		INSULATION DIAMETER RANGE	
.265-.297 IN [6.73-7.54 mm]		Ø	
TERMINAL APPLICATION SPECIFICATION	114-2123	-	-
TERMINALS APPLIED ²⁰			
TE TERMINAL	TE TERMINAL	TE TERMINAL	TE TERMINAL
3-350815-2	3-520116-2	3-520140-2	5-520150-2
5-350815-2	3-520124-2	3-520140-4	6-520150-2
3-350819-2	9-520124-2	5-520140-2	3-520276-2
5-350819-2		9-520140-2	9-520276-2
3-520106-2		3-520150-2	3-521142-2
		3-521150-2	3-1969626-1

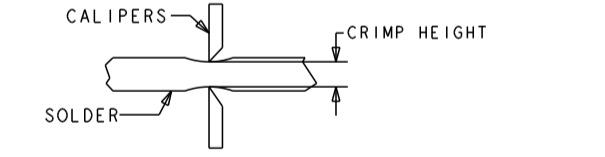


WIRE SIZE	CRIMP HEIGHT INCH [mm]	CRIMP HEIGHT REFERENCE SETTING	Ø SOLDER
14 AWG	0.075+/-0.002 [1.91+/-0.05]	6.4	.187 IN [4.750mm]
16, (2)18, OR (3)20	0.070+/-0.002 [1.78+/-0.05]	7.7	.187 IN [4.750mm]

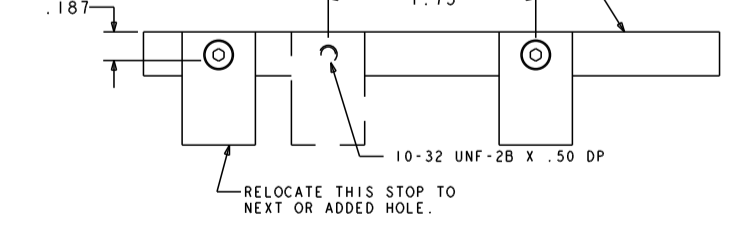
- ¹ RECOMMENDED SPARE PARTS
- ² GREASE BEARING SURFACES LIGHTLY
- 3. LUBRICATE DAILY PER THE APPLICATOR INSTRUCTION SHEET SUPPLIED WITH THE APPLICATOR.
- ⁴ APPLICATOR SPECIFIC DATA TO BE ENTERED INTO BLANK MEMORY CHIP AT ASSEMBLY. SEE BELOW FOR PART NUMBER:
 PNEUMATIC FEED WITH "SMART APPLICATOR" CONVERSION: 8-2151032-4
 SERVO FEED WITH "FINE CRIMP HEIGHT ADJUST": 8-2151032-5
 SERVO FEED WITH "NON-CRIMP HEIGHT ADJUST": 8-2151032-6
- 5. ADJUSTMENT OF THE STRIPPER MAY BE REQUIRED WHEN MOVING THE APPLICATOR BETWEEN BENCH AND LEADMAKER APPLICATIONS.
- ⁶ GREASE THREADS, GROOVE AND O-RING ON ITEMS 35 & 252.
- ⁷ MAGNET, ITEM 166 MUST BE ORIENTED CORRECTLY IN ORDER TO PROPERLY ACTUATE THE COUNTER.
- ⁸ CRIMP HEIGHT REFERENCE SETTING WAS THE SETTING USED WHEN THE APPLICATOR WAS QUALIFIED AT THE FACTORY. ADJUSTMENT MAY BE NECESSARY WHEN RUNNING APPLICATOR IN THE FIELD.
- ⁹ TO CONVERT THE APPLICATOR TO A NON-CARRIER CUTTING STYLE, REMOVE ITEM 13 AND ATTACH TO THE LOCATION ON THE BACK SIDE OF THE HOUSING. REFER TO INSTRUCTION SHEET FOR ADDITIONAL INFORMATION.
- ¹⁰ WHEN ASSEMBLING -6 NON-CRIMP HEIGHT ADJUST APPLICATOR USE SHIM PACK 2119957-2 TO ALIGN APPLICATOR'S MAXIMUM WIRE CRIMP HEIGHT AT NORMAL TERMINATOR SHUT HEIGHT
- ¹¹ ITEM 7 MUST BE REMOVED IF APPLICATOR IS USED ON BENCH MACHINE.
- ¹² ITEMS 5 AND 9 OR ITEMS 10 AND 22 ARE REQUIRED WHEN RUNNING ON A LEADMAKER. ITEM 42 OR ITEM 43 REQUIRED WHEN RUNNING ON A BENCH MACHINE.
- ¹³ FEED ADJUSTMENT MAY BE REQUIRED WHEN SWITCHING TERMINALS.
- ¹⁴ GROUP 1 TERMINALS: Ø.160 IN [4.06mm] MAX INSULATION
 GROUP 2 TERMINALS: Ø.260 IN [6.60mm] MAX INSULATION

¹³ USE ITEMS 5, 9, OR 42 WITH GROUP 1 TERMINALS
 USE ITEMS 10, 22, OR 43 WITH GROUP 2 TERMINALS

¹⁶ TO CHECK CRIMP HEIGHT, CRIMP SOLDER (Ø.19 IN [4.83mm] 60/40 SOLID CORE) AND MEASURE AT CENTER OF SLUG.



¹⁷ IT MAY BE NECESSARY TO MODIFY THE T-TERMINATING/K-PRESS BASE PLATE BEFORE USE BY ADDING A 10-32 HOLE TO RELOCATE THE FORWARD STOP AS SHOWN.



¹⁸ ITEMS 253 AND 255 MUST BE INSTALLED IN THE G-TERMINATING UNIT CHIP RELIEF HOLE BEFORE INSTALLING THE APPLICATOR.

¹⁹ ITEM 257, REQUIRED IF APPLICATOR IS RUN ON T-TERMINATING UNIT/K-PRESS. GUARD, ITEM 256, REQUIRED IF APPLICATOR IS BEING USED ON G-TERMINATOR.

²⁰ TERMINAL PITCH NOT COMPATIBLE WITH MECHANICAL FEED.

***WARNING**
 ON INSTALLATION, SET WIRE DISC, ITEM 40 TO LARGEST WIRE SIZE SETTING. USE OF SETTINGS BELOW MINIMUM REQUIRED CRIMP HEIGHT SETTING WILL CAUSE DAMAGE TO CRIMP TOOLING.

-	-	1	-	-	2119957-2	APPLICATOR SHIM PACK	260
-	REF	REF	REF	REF	462992-5	GUARD ASSY	257
-	REF	REF	REF	REF	679532-1	INSERT, GUARD	256
-	1	1	1	1	189728-1	BRACKET, SPACER	255
-	1	1	1	1	568681-1	SPACER, BASE PLATE	253
-	1	-	1	1	8-21084-0	O-RING, .676 ID, .070 DIA. MAT.	252
-	-	-	-	1	2119640-1	PUSH ROD, AIR FEED	250
-	-	-	-	1	1803259-1	BUSHING, FLANGED	249
-	-	-	-	1	2119641-1	FEED CAM, AIR FEED	248
-	1	-	1	1	2119798-1	DETENT PIN	247
-	2	-	2	2	1-22279-3	SPRING, COMPRESSION	246
-	-	1	-	-	2119758-1	RAM, AMP STYLE, SIDE FEED, NON-ADJ.	245
-	1	1	1	1	18023-1	SCR, SKT HD CAP M3 X 5.0	241
-77	-7	-6	-5	-2	PART NO	DESCRIPTION	ITEM NO

ATLANTIC VERSION
 Shown on sheets 1 of 4 & 2 of 4
 (Pacific version shown on sheets 3 of 4 & 4 of 4)

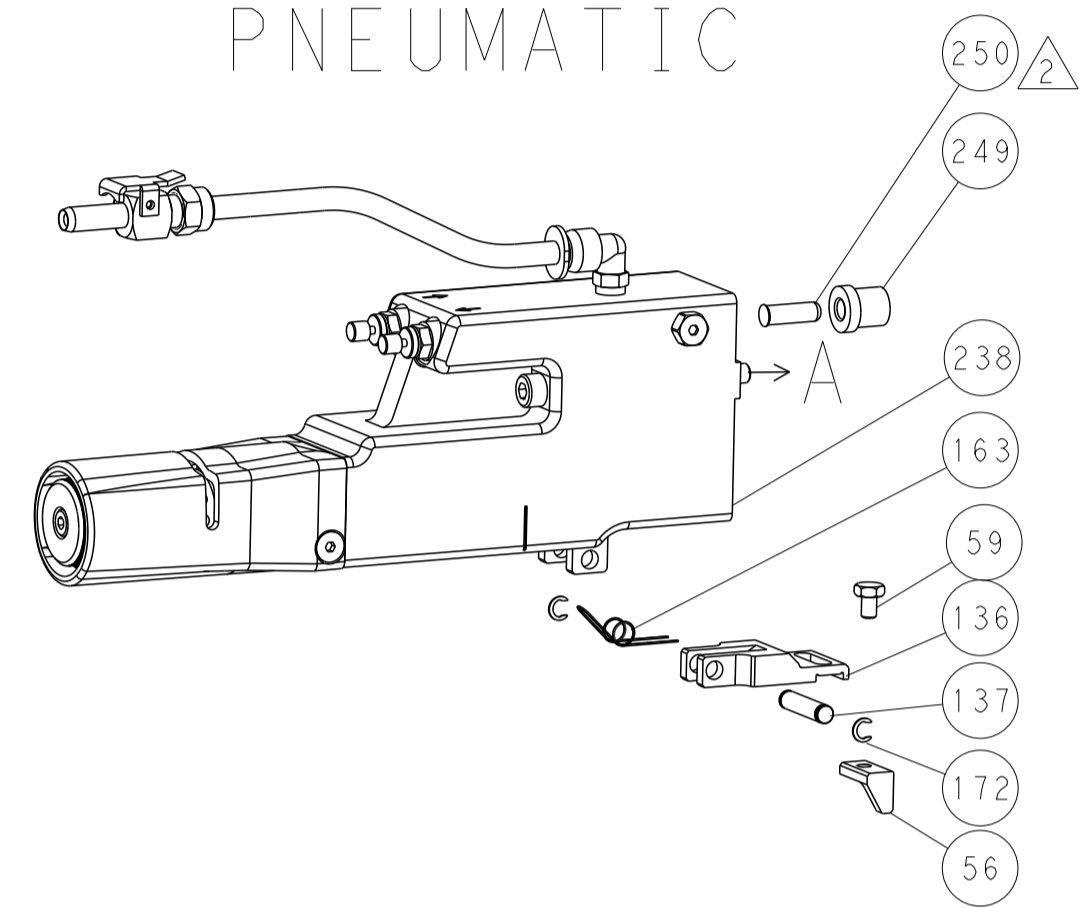
SET UP GAUGE	LOC	DIST	REVISIONS					
2119599-1	A	66	P	LTN	DESCRIPTION	DATE	OWN	APVD
			C		ECR-15-011866	10AUG2015	JH	TE
			C1		ECR-15-012176	17AUG2015	JH	TE
			C2		ECR-15-016183	05NOV2015	JH	JDG
			D		ECR-16-015863	16NOV2016	TB	CT

-	-	2	2	-	2168400-6	SHCS, LOW HEAD, RoHS, M5 X 16	240
-	-	-	-	-	2119580-1	MECHANICAL FEED ASSEMBLY	239
-	-	-	-	1	2063440-2	AIR FEED MODULE	238
-	-	1	1	-	2119740-2	TAG, IDENTIFICATION	213
-	-	1	1	-	1901094-3	SPACER, FEEDER	198
-	-	-	-	2	21045-3	RING, RETAIN, EXTERN, 3/16 CRESCENT	172
-	1	1	1	1	994969-1	MAGNET, RARE EARTH HIGH ENERGY	166
-	REF	REF	REF	REF	994970-2	COUNTER, MAGNETIC	164
-	-	-	-	1	240638-1	SPRING, FEED FINGER	163
-	-	-	-	1	3-23627-7	PIN, RETAIN, GRVD, 3/16 X .854	137
-	-	-	-	1	2119799-1	HOLDER, FEED FINGER, AF	136
-	-	REF	REF	-	SEE NOTE 4	MEMORY CHIP, PROGRAMMED	135
-	-	1	1	-	1633743-1	SERVO FEED LATCH ASM	133
-	1	1	1	1	1-22281-8	SPRING, COMPRESSION	121
-	1	1	1	1	1-690438-0	FRONT STRIP GUIDE	96
-	4	4	4	4	2168083-1	SCR, SKT HD CAP, RoHS, M3 X 8.0	95
-	1	1	1	1	2168083-6	SCR, SKT HD CAP, RoHS, M5 X 65	93
-	1	1	1	1	455888-4	SPACER, CRIMPER	82
-	1	1	1	1	240641-6	SPACER	81
-	1	1	1	1	2119956-1	DOCUMENTATION PACKAGE	71
-	1	1	1	1	2161332-1	DEPRESSOR, WIRE FUNNEL	70
-	1	1	1	1	2161331-1	SPACER, WIRE FUNNEL DEPRESSOR	69
-	2	2	2	2	1-18028-4	WASHER, FLAT, REG M3	68
-	1	-	-	1	2119740-1	TAG, IDENTIFICATION	67
-	2	2	2	2	2168078-1	SCREW, DRIVE, RH, RoHS, 2 x .188	66
-	1	-	1	1	2119793-1	LIMITER, ADJUSTMENT BOLT	63
-	3	-	3	3	992763-5	SCR, SET, SOC, CONE POINT, M3 x 4.0	62
-	2	2	2	2	2-18032-5	SCR, SET, FLT POINT M5 X 20.0	61
-	1	1	1	1	2079383-4	SCR, BHSC, RoHS (M4 X 8)	60
-	-	-	-	1	5-18022-5	SCR, HEX HD CAP, M4 X 6.0	59
-	-	-	-	1	462427-2	FINGER, FEED	56
-	4	4	4	4	2168400-1	SHCS, LOW HEAD, RoHS, M4 X 12	54
-	2	2	2	2	2168083-8	SCR, SKT HD CAP, RoHS, M4 X 16	53
-	-	-	-	1	18023-9	SCR, SKT HD CAP M4 X 6.0	49
-	1	1	1	1	1-2119656-9	APPLICATOR BASIC ASSEMBLY, SF	46
-	1	-	1	1	2119370-1	RAM, AMP STYLE, SIDE FEED	44
-	1	1	1	1	462433-7	SUPPORT, INSULATION	43
-	1	1	1	1	462433-6	SUPPORT, INSULATION	42
-	1	1	1	1	2079383-7	SCR, BHSC, RoHS (M8 X 25)	41
-	1	-	1	1	2119645-1	DISC, NUMBERED FA WIRE ADJUSTMENT	40
-	1	-	1	1	2119957-1	APPLICATOR SHIM PACK	39
-	1	1	1	1	2119644-2	RAM WASHER, PRECISION	38
-	1	1	1	1	2119085-1	FA HEAD, ATLANTIC STYLE	37
-	1	-	1	1	2119092-1	BOLT, ADJUSTMENT	35
-	2	2	2	2	5-22278-1	SPRING, COMPRESSION	33
-	1	1	1	1	2161328-1	HEX HEAD, FLANGED, M5 x 8mm LONG	32
-	2	2	2	2	1-2168083-4	SCR, SKT HD CAP, RoHS, M4 X 5	30
-	1	1	1	1	2161336-1	PLATE, REAR STRIP GUIDE	29
-	2	2	2	2	22281-9	SPRING, COMPRESSION	27
-	1	1	1	1	356835-1	LEVER, DRAG RELEASE	26
-	1	1	1	1	240792-1	DRAG, TERMINAL	25
-	1	1	1	1	684042-4	GUIDE, STRIP, FRONT	24
-	1	1	1	1	980371-4	SCR, SKT HD SHLDR 5.0 DIA X 6.0	23
-	1	1	1	1	462431-5	WIRE FUNNEL	22
-	1	1	1	1	2168083-2	SCR, SKT HD CAP, RoHS, M4 X 8.0	21
-	1	1	1	1	1-18028-2	WASHER, FLAT, REG M4	20
-	1	1	1	1	2119533-1	STRIPPER, SIDE FEED	19
-	1	1	1	1	463460-3	HOLD DOWN, TERMINAL	18
-	1	1	1	1	469542-3	REAR FLOATING SHEAR	17
-	4	4	4	4	1-2168083-1	SCR, SKT HD CAP, RoHS, M3 X 6	16
-	1	1	1	1	2161335-2	SHEAR PLATE, REAR	15
-	1	1	1	1	2119862-2	SHEAR HOLDER, REAR	14
-	1	1	1	1	2280441-1	INSERT, SHEAR	13
-	1	1	1	1	3-22280-3	SPRING, COMPRESSION	12
-	1	1	1	1	356885-4	STOP, SHEAR	11
-	1	1	1	1	462843-6	TERMINAL SUPPORT	10
-	1	1	1	1	462843-5	TERMINAL SUPPORT	9
-	1	1	1	1	464282-2	ANVIL, SAND-BLASTED 16-14	8
-	1	1	1	1	803925-2	GUIDE, CARRIER SCRAP	7
-	1	1	1	1	2-690468-5	DEPRESSOR SHEAR, REAR	6
-	1	1	1	1	462431-4	WIRE FUNNEL	5
-	1	1	1	1	238009-3	BLOCK, FL CRIMPER SPACER	4
-	1	1	1	1	464281-1	CRIMPER, SEMI FLAT 16-14	1
-77	-7	-6	-5	-2	PART NO	DESCRIPTION	ITEM NO

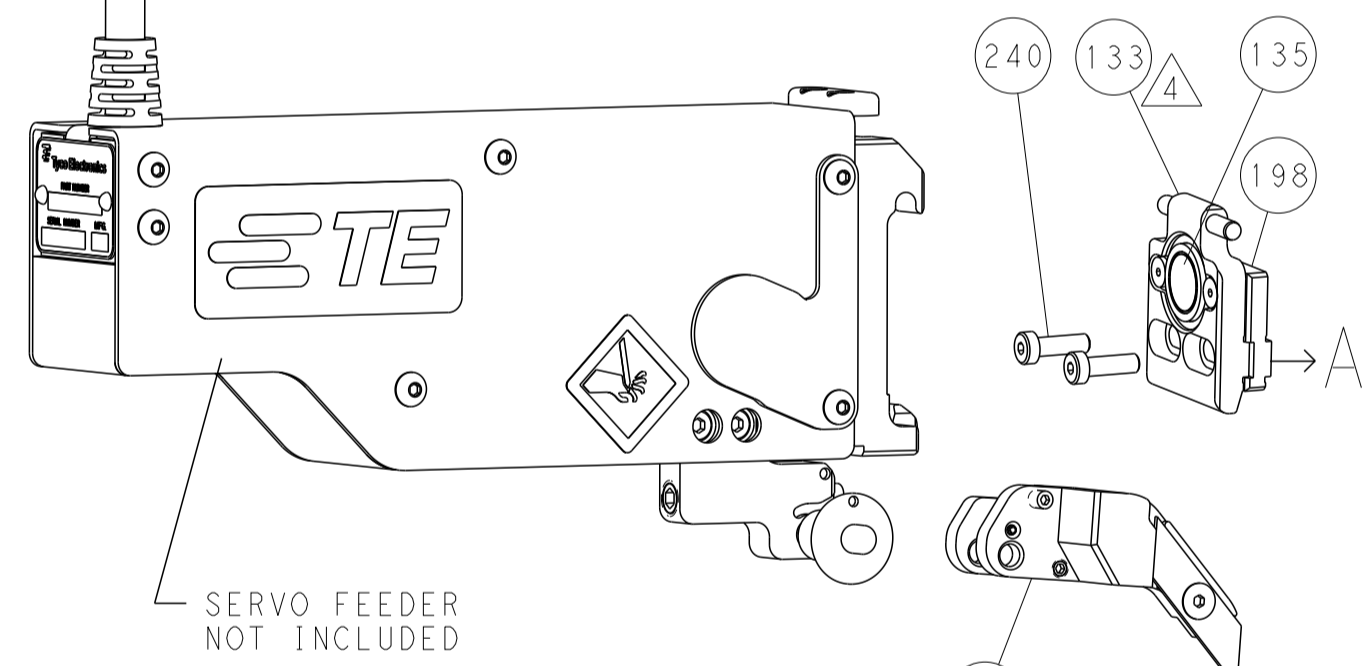
DIMENSIONS:		TOLERANCES UNLESS OTHERWISE SPECIFIED:		DRAWING NO		RESTRICTED TO	
mm	0 PLC	±		0779	2151032		
	1 PLC	±					
	2 PLC	±					
	3 PLC	±					
	4 PLC	±					
	5 PLC	±					
	6 PLC	±					
	ANGLES	±					
	FINISH	±					
MATERIAL				WEIGHT			
Customer Accessible Production Drawing				SCALE	1:1	SHEET	1 of 4
				REV	D		

LOC	DIST	REVISIONS			
P	LTN	DESCRIPTION	DATE	DMN	APVD
A	66	SEE SHEET 1	-	-	-

FEED TYPE PNEUMATIC

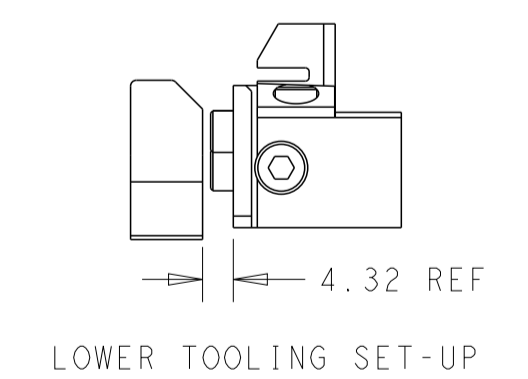
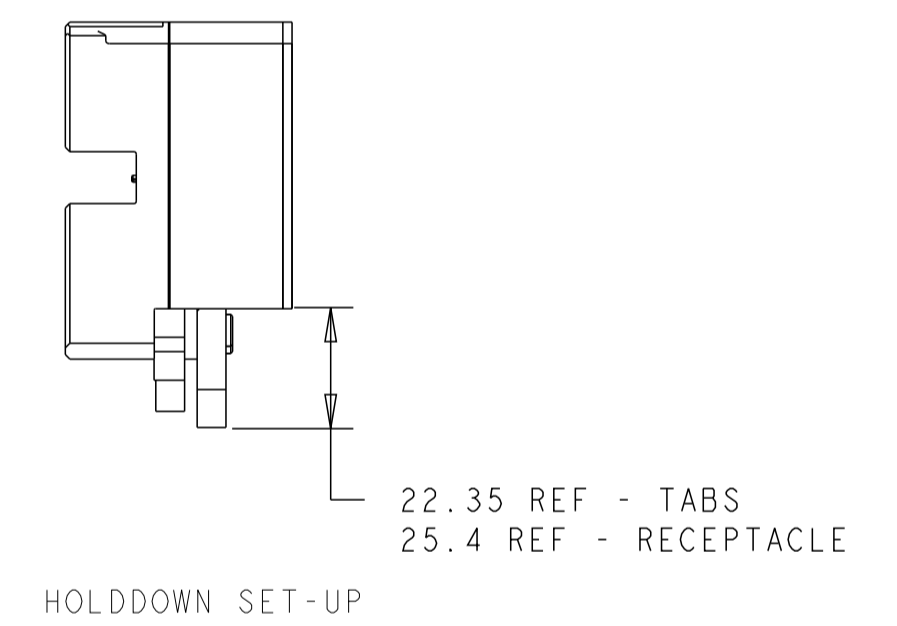
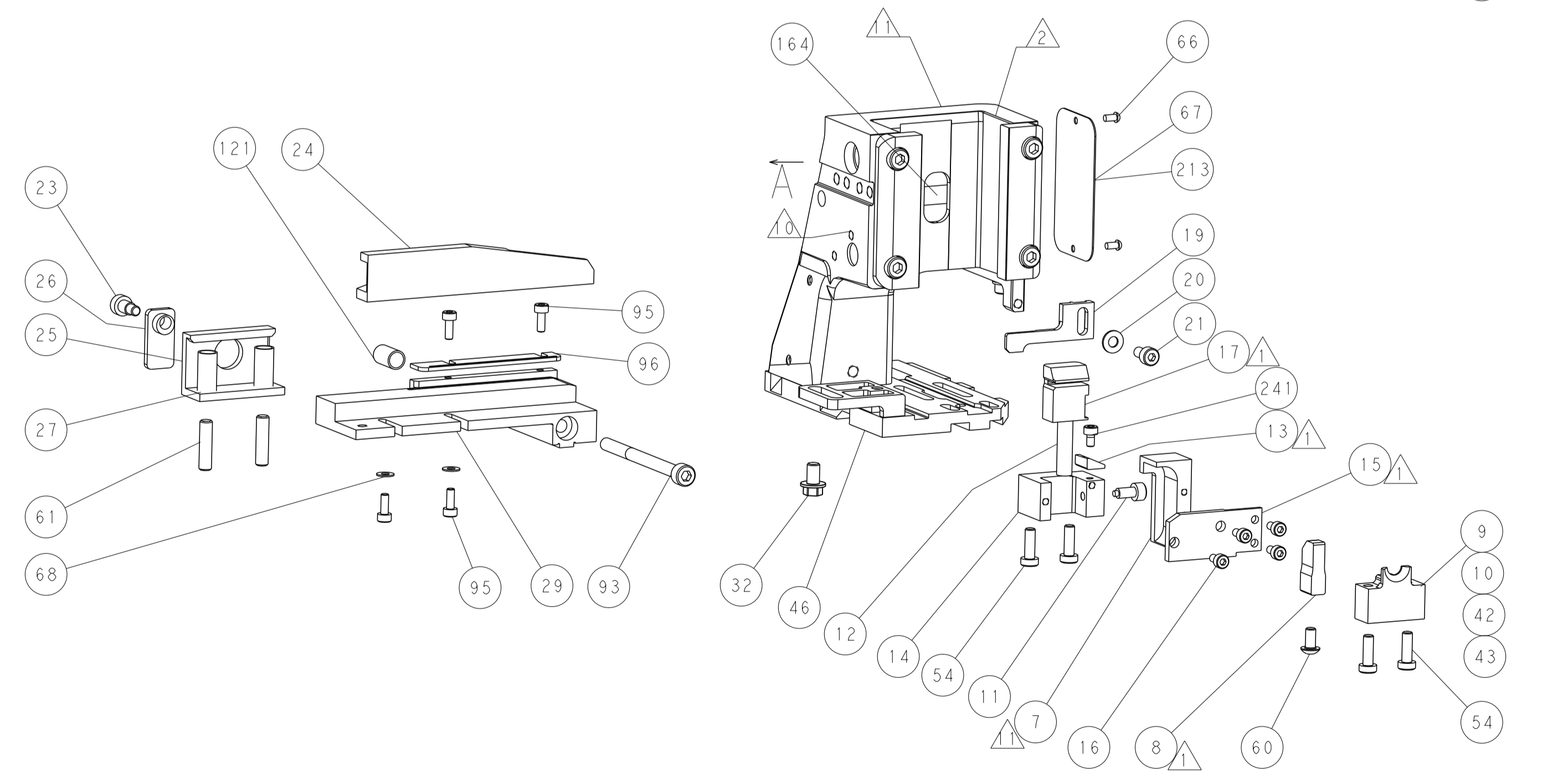
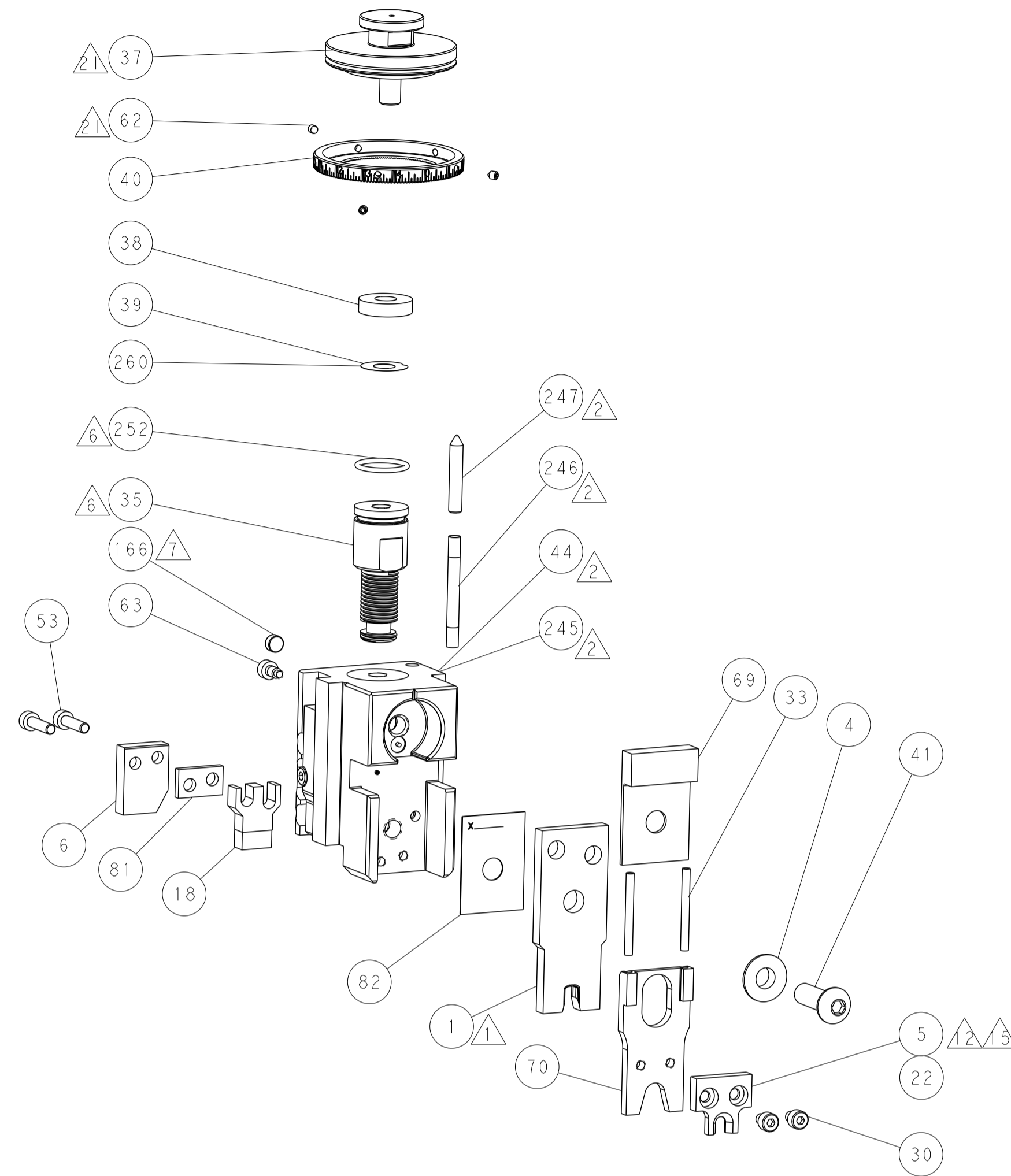
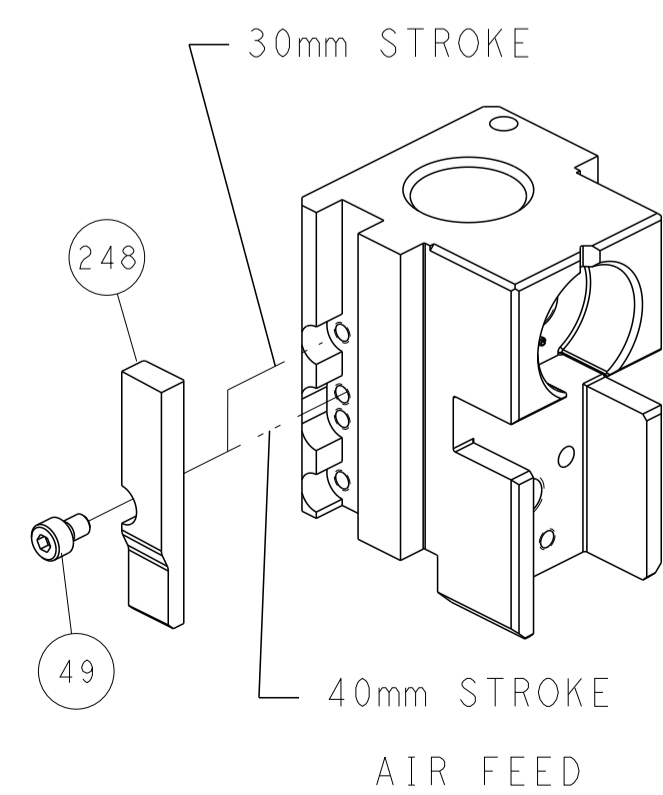


SERVO LATCH PLATE



***FEED FINGER REPRESENTATION ABOVE MAY DIFFER FROM ACTUAL FEED FINGER THAT IS REQUIRED BY THIS APPLICATOR

CAM POSITIONS



ATLANTIC VERSION
 Shown on sheets 1 of 4 & 2 of 4
 (Pacific version shown on sheets 3 of 4 & 4 of 4)

DIMENSIONS:		TOLERANCES UNLESS OTHERWISE SPECIFIED:		DMN	B. WEAVER	17OCT2011	TE Connectivity Harrisburg, PA 17105-3608
mm	0 PLC	±		CHK	G. HOFFNER	17OCT2011	
MATERIAL:		FINISH:		APVD	T. ELBIN	17OCT2011	NAME
				PRODUCT SPEC		OCEAN SIDE FEED APPLICATOR	
				APPLICATION SPEC		SIZE	
				WEIGHT		CAGE CODE	
				SCALE		DRAWING NO	
				SHEET		RESTRICTED TO	
				REV		D	

PACIFIC VERSION TERMINATOR INTERFACE ADAPTER	PART NUMBER	REVISION	DESCRIPTION	FEED TYPE	APPLICATOR STYLE CONVERSION CHART					
					CONVERT TO	PART NUMBERS REQUIRED				
	2-2151032-2	D	FINE CRIMP HEIGHT ADJUST	PNEUMATIC	-	1338685-1	5-18022-5	-	-	-
					SERVO LATCH PLATE	2119951-1	2161540-1	8-2151032-5	1901094-3	1976043-1
	2-2151032-5	D	FINE CRIMP HEIGHT ADJUST	SERVO LATCH PLATE Δ 4	-	1338685-1	5-18022-5	-	-	-
					PNEUMATIC FEED	2119950-1	1338685-1	5-18022-5	2119641-2	2119799-1
2-2151032-7	D	FINE CRIMP HEIGHT ADJUST	NONE	-	-	-	-	-	-	
7-2151032-7	A	CRIMP TOOLING KIT	-	-	-	-	-	-	-	

APPLICATOR DATA		
CRIMP SIZE	TYPE	
WIRE .205 [5.21 mm]	0	
INSUL .000 [0.00 mm]	-	
APPLICATOR INSTRUCTIONS 408-10389		

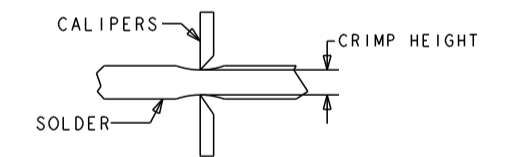
TERMINAL DATA: TE TERMINAL		TE CRIMP SPECIFICATION	
TERMINAL NAME: FULLY INSULATED FASTON			
WIRE STRIP LENGTH .265-.297 IN [6.73-7.54 mm]		INSULATION DIAMETER RANGE \emptyset Δ 3	
TERMINAL APPLICATION SPECIFICATION 114-2123			
TERMINALS APPLIED Δ 9			
TE TERMINAL	TE TERMINAL	TE TERMINAL	TE TERMINAL
3-350815-2	3-520116-2	3-520140-2	5-520150-2
5-350815-2	3-520124-2	3-520140-4	6-520150-2
3-350819-2	9-520124-2	5-520140-2	3-520276-2
5-350819-2		9-520140-2	9-520276-2
3-520106-2		3-520150-2	3-521142-2
		3-521150-2	3-1969626-1

WIRE SIZE	CRIMP HEIGHT INCH [mm]	CRIMP HEIGHT REFERENCE SETTING	\emptyset SOLDER Δ 8
14 AWG	0.075+/-0.002 [1.91+/-0.05]	6.4	.187 IN [4.750mm]
16, (2)18, OR (3)20	0.070+/-0.002 [1.78+/-0.05]	7.7	.187 IN [4.750mm]

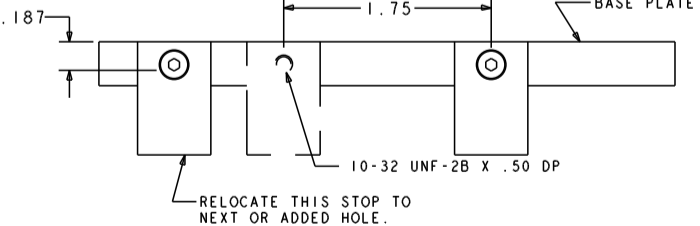
- Δ RECOMMENDED SPARE PARTS
- Δ GREASE BEARING SURFACES LIGHTLY
- 3. LUBRICATE DAILY PER THE APPLICATOR INSTRUCTION SHEET SUPPLIED WITH THE APPLICATOR.
- Δ APPLICATOR SPECIFIC DATA TO BE ENTERED INTO BLANK MEMORY CHIP AT ASSEMBLY. SEE BELOW FOR PART NUMBER:
PNEUMATIC FEED WITH "SMART APPLICATOR" CONVERSION: 8-2151032-4
SERVO FEED WITH "FINE CRIMP HEIGHT ADJUST": 8-2151032-5
- 5. ADJUSTMENT OF THE STRIPPER MAY BE REQUIRED WHEN MOVING THE APPLICATOR BETWEEN BENCH AND LEADMAKER APPLICATIONS.
- Δ GREASE THREADS, GROOVE AND O-RING ON ITEMS 139 & 152.
- Δ MAGNET MUST BE ORIENTED CORRECTLY IN ORDER TO PROPERLY ACTUATE THE COUNTER.
- Δ CRIMP HEIGHT REFERENCE SETTING WAS THE SETTING USED WHEN THE APPLICATOR WAS QUALIFIED AT THE FACTORY. ADJUSTMENT MAY BE NECESSARY WHEN RUNNING APPLICATOR IN THE FIELD.
- Δ TO CONVERT THE APPLICATOR TO A NON-CARRIER CUTTING STYLE, REMOVE ITEM 13 AND ATTACH TO THE LOCATION ON BACK SIDE OF THE HOUSING. REFER TO INSTRUCTION SHEET FOR ADDITIONAL INFORMATION.
- Δ ITEM 7 MUST BE REMOVED IF APPLICATOR IS USED ON BENCH MACHINE.
- Δ ITEMS 5 AND 9 OR ITEMS 10 AND 22 ARE REQUIRED WHEN RUNNING ON A LEADMAKER.
ITEM 42 OR ITEM 43 REQUIRED WHEN RUNNING ON A BENCH MACHINE.
- Δ FEED ADJUSTMENT MAY BE REQUIRED WHEN SWITCHING TERMINALS.
- Δ GROUP 1 TERMINALS: \emptyset .160 IN [4.06mm] MAX INSULATION
GROUP 2 TERMINALS: \emptyset .260 IN [6.60mm] MAX INSULATION

Δ 4 USE ITEMS 5, 9, OR 42 WITH GROUP 1 TERMINALS
USE ITEMS 10, 22, OR 43 WITH GROUP 2 TERMINALS

Δ 5 TO CHECK CRIMP HEIGHT, CRIMP SOLDER (\emptyset .19 IN [4.83mm] 60/40 SOLID CORE) AND MEASURE AT CENTER OF SLUG.



Δ 6 IT MAY BE NECESSARY TO MODIFY THE T-TERMINATING/K-PRESS BASE PLATE BEFORE USE BY ADDING A 10-32 HOLE TO RELOCATE THE FORWARD STOP AS SHOWN.



Δ 7 ITEMS 253 AND 255 MUST BE INSTALLED IN THE G-TERMINATING UNIT CHIP RELIEF HOLE BEFORE INSTALLING THE APPLICATOR.

Δ 8 ITEM 257, REQUIRED IF APPLICATOR IS RUN ON T-TERMINATING UNIT/K-PRESS. GUARD, ITEM 256, REQUIRED IF APPLICATOR IS BEING USED ON G-TERMINATOR.

Δ 9 TERMINAL PITCH NOT COMPATIBLE WITH MECHANICAL FEED.

Δ 10 APPLY PART NUMBER 1-23419-5 LOCTITE TO THREADS OF ITEMS 62.

*WARNING
ON INSTALLATION, SET WIRE DISC, ITEM 40 TO LARGEST WIRE SIZE SETTING. USE OF SETTINGS BELOW MINIMUM REQUIRED CRIMP HEIGHT SETTING WILL CAUSE DAMAGE TO CRIMP TOOLING.

ITEM NO	DESCRIPTION	ITEM NO				
-77	-27	-25	-22	PART NO	DESCRIPTION	ITEM NO
-	REF	REF	REF	462992-5	GUARD ASSY	257
-	REF	REF	REF	679532-1	INSERT, GUARD	256
-	1	1	1	189728-1	BRACKET, SPACER	255
-	1	1	1	568681-1	SPACER, BASE PLATE	253
-	1	1	1	2119782-1	FINE ADJUST HEAD ASM, PACIFIC STYLE	251
-	-	-	-	2119640-1	PUSH ROD, AIR FEED	250
-	-	-	-	1803259-1	BUSHING, FLANGED	249
-	2	2	2	1-22279-3	SPRING, COMPRESSION	246
-	1	1	1	18023-1	SCR, SKT HD CAP M3 X 5.0	241
-	-	-	-	2168400-6	SHCS, LOW HEAD, RoHS, M5 X 16	240
-	-	-	-	2119580-1	MECHANICAL FEED ASSEMBLY	239

SET UP GAUGE	LOC	DIST	REVISIONS			
2119599-1	A	66	REV	DATE	BY	APPD
			-	SEE SHEET 1	-	-

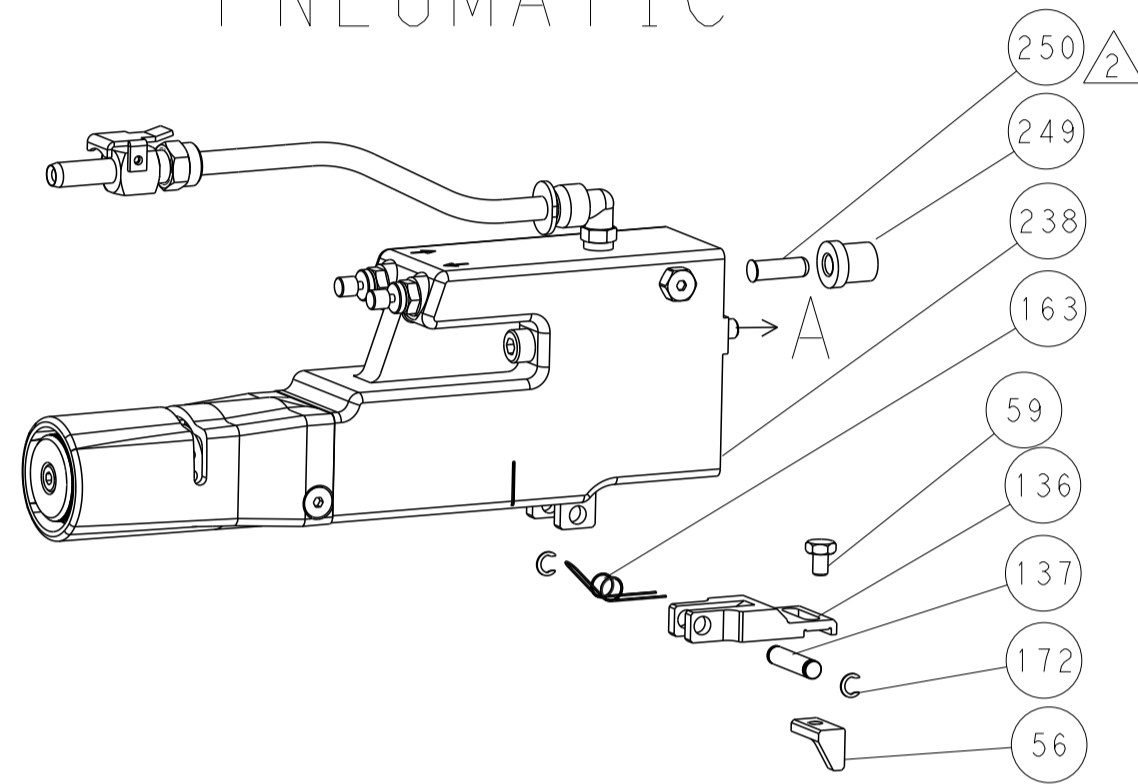
REV	DATE	BY	APPD	DESCRIPTION	ITEM NO	
-	-	-	1	2063440-2	AIR FEED MODULE	238
-	-	1	-	2119740-2	TAG IDENTIFICATION	213
-	-	1	-	1901094-3	SPACER, FEEDER	198
-	-	-	2	21045-3	RING, RETAIN, EXTERN, 3/16 CRESCENT	172
-	1	1	1	994969-1	MAGNET, RARE EARTH HIGH ENERGY	166
-	REF	REF	REF	994970-2	COUNTER, MAGNETIC	164
-	-	-	1	240638-1	SPRING, FEED FINGER	163
Δ 6	-	1	1	8-21084-1	O-RING, .801 ID, .070 DIA. MAT.	152
-	-	-	1	2119641-2	FEED CAM, AIR FEED	151
-	1	1	1	2119798-2	DETENT PIN	145
-	1	1	1	2079383-8	SCR, BHSC, RoHS (M4 X 16)	144
-	4	4	4	2168400-5	SHCS, LOW HEAD, RoHS, M4 X 20	143
-	1	1	1	2-2119656-0	APPLICATOR BASIC ASSEMBLY, SF	141
-	1	1	1	2119650-1	RAM, ASIAN STYLE, SIDE FEED	140
Δ 6	-	1	1	2119092-2	BOLT, ADJUSTMENT	139
-	-	-	1	3-23627-7	PIN, RETAIN, GRVD, 3/16 X .854	137
-	-	-	1	2119799-1	HOLDER, FEED FINGER, AF	136
Δ 4	-	REF	-	SEE NOTE 4	MEMORY CHIP, PROGRAMMED	135
-	-	1	-	1633743-1	SERVO FEED LATCH ASM	133
-	1	1	1	1-22281-8	SPRING, COMPRESSION	121
-	1	1	1	1-690438-0	FRONT STRIP GUIDE	96
-	4	4	4	2168083-1	SCR, SKT HD CAP, RoHS, M3 X 8.0	95
-	1	1	1	2168083-6	SCR, SKT HD CAP, RoHS, M5 X 65	93
-	1	1	1	455888-4	SPACER, CRIMPER	82
-	1	1	1	240641-6	SPACER	81
-	1	1	1	2119956-1	DOCUMENTATION PACKAGE	71
-	1	1	1	2161332-1	DEPRESSOR, WIRE FUNNEL	70
-	1	1	1	2161331-1	SPACER, WIRE FUNNEL DEPRESSOR	69
-	2	2	2	1-18028-4	WASHER, FLAT, REG M3	68
-	1	-	1	2119740-1	TAG IDENTIFICATION	67
-	2	2	2	2168078-1	SCREW, DRIVE, RH, RoHS, 2 x .188	66
-	1	1	1	2119793-1	LIMITER, ADJUSTMENT BOLT	63
Δ 20	-	3	3	992763-5	SCR, SET, SOC, CONE POINT, M3 X 4.0	62
-	2	2	2	2-18032-5	SCR, SET, FLT POINT M5 X 20.0	61
-	-	-	1	5-18022-5	SCR, HEX HD CAP, M4 X 6.0	59
-	-	-	1	462427-2	FINGER, FEED	56
-	2	2	2	2168083-8	SCR, SKT HD CAP, RoHS, M4 X 16	53
-	-	-	1	18023-9	SCR, SKT HD CAP M4 X 6.0	49
Δ 4	-	1	1	462433-7	SUPPORT, INSULATION	43
Δ 12	-	1	1	462433-6	SUPPORT, INSULATION	42
-	1	1	1	2079383-7	SCR, BHSC, RoHS (M8 X 25)	41
-	1	1	1	2119645-1	DISC, NUMBERED FA WIRE ADJUSTMENT	40
-	1	1	1	2119957-1	APPLICATOR SHIM PACK	39
-	1	1	1	2119644-2	RAM WASHER, PRECISION	38
-	2	2	2	5-22278-1	SPRING, COMPRESSION	33
-	1	1	1	2161328-1	HEX HEAD, FLANGED, M5 X 8mm LONG	32
-	2	2	2	1-2168083-4	SCR, SKT HD CAP, RoHS, M4 X 5	30
-	1	1	1	2161336-1	PLATE, REAR STRIP GUIDE	29
-	2	2	2	22281-9	SPRING, COMPRESSION	27
-	1	1	1	356835-1	LEVER, DRAG RELEASE	26
-	1	1	1	240792-1	DRAG, TERMINAL	25
-	1	1	1	684042-4	GUIDE, STRIP, FRONT	24
-	1	1	1	980371-4	SCR, SKT HD SHLDR 5.0 DIA X 6.0	23
Δ 4, Δ 11	-	1	1	462431-5	WIRE FUNNEL	22
-	1	1	1	2168083-2	SCR, SKT HD CAP, RoHS, M4 X 8.0	21
-	1	1	1	1-18028-2	WASHER, FLAT, REG M4	20
-	1	1	1	2119533-1	STRIPPER, SIDE FEED	19
-	1	1	1	463460-3	HOLD DOWN, TERMINAL	18
Δ 1	-	1	1	469542-3	REAR FLOATING SHEAR	17
-	4	4	4	1-2168083-1	SCR, SKT HD CAP, RoHS, M3 X 6	16
Δ 1	-	1	1	2161335-2	SHEAR PLATE, REAR	15
-	1	1	1	2119862-2	SHEAR HOLDER, REAR	14
Δ 1	-	1	1	2280441-1	INSERT, SHEAR	13
-	1	1	1	3-22280-3	SPRING, COMPRESSION	12
-	1	1	1	356885-4	STOP, SHEAR	11
Δ 4	-	1	1	462843-6	TERMINAL SUPPORT	10
Δ 12	-	1	1	462843-5	TERMINAL SUPPORT	9
Δ 1	1	1	1	464282-2	ANVIL, SAND-BLASTED 16-14	8
Δ 10	-	1	1	803925-2	GUIDE, CARRIER SCRAP	7
-	1	1	1	2-690468-5	DEPRESSOR SHEAR, REAR	6
Δ 4, Δ 11	-	1	1	462431-4	WIRE FUNNEL	5
-	1	1	1	238009-3	BLOCK, FL CRIMPER SPACER	4
Δ 1	1	1	1	464281-1	CRIMPER, SEMI FLAT 16-14	1

PACIFIC VERSION
Shown on sheets 3 of 4 & 4 of 4
(Atlantic version shown on sheets 1 of 4 & 2 of 4)

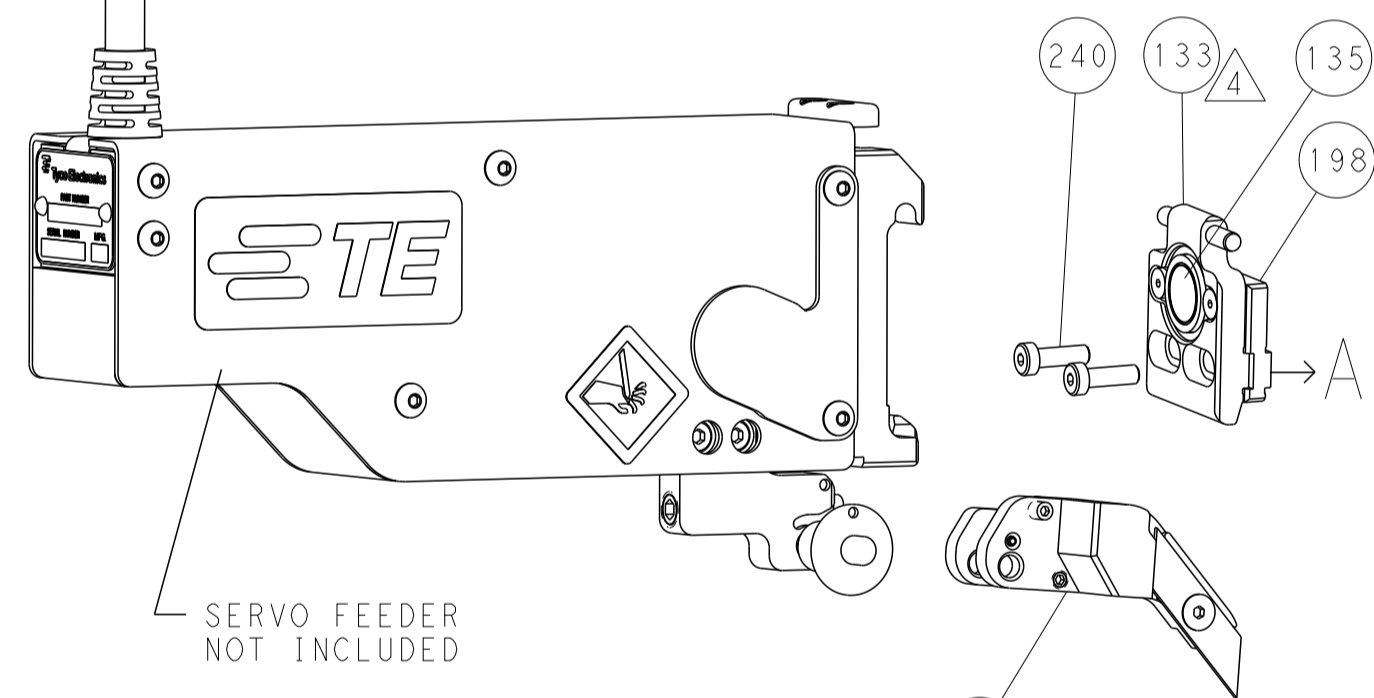
DIMENSIONS: mm		TOLERANCES UNLESS OTHERWISE SPECIFIED:		DWG: B. WEAVER 11OCT2011		CHK: G. HOFENER 11OCT2011		NAME: OCEAN SIDE FEED APPLICATOR	
0 PLC	±	1 PLC	±	APVD: T. ELBIN 11OCT2011	PRODUCT SPEC	SIZE: A1	CAGE CODE: 00779	DRAWING NO: C=2151032	RESTRICTED TO: -
2 PLC	±	3 PLC	±	APPLICATION SPEC		SCALE: 1:2	SHEET: 3	OF: 4	REV: D
4 PLC	±	ANGLES	±	WEIGHT		Customer Accessible Production Drawing		SHEETS 1 & 2 ARE NOT REQUIRED FOR PACIFIC VERSION	

LOC		DIST		REVISIONS			
A	66	P	LTH	DESCRIPTION	DATE	OWN	APVD
		-		SEE SHEET 1			

FEED TYPE PNEUMATIC

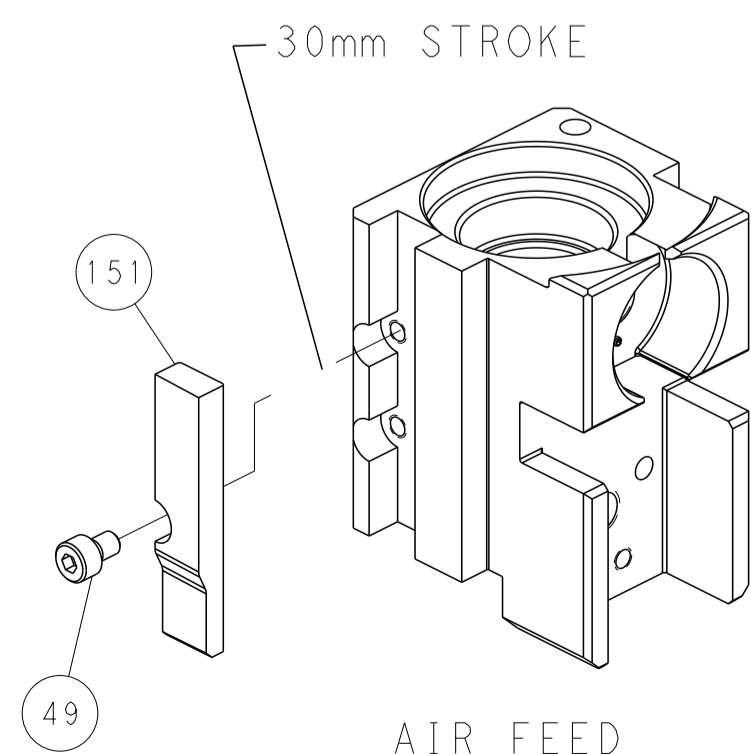


SERVO LATCH PLATE

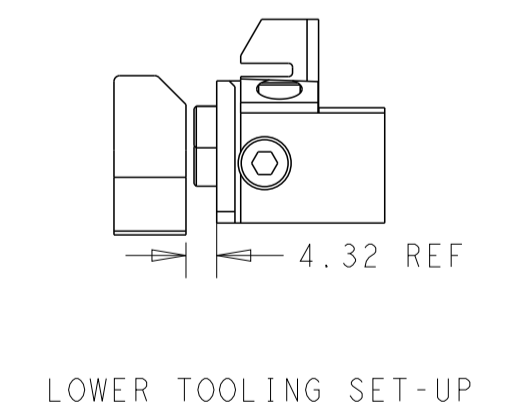
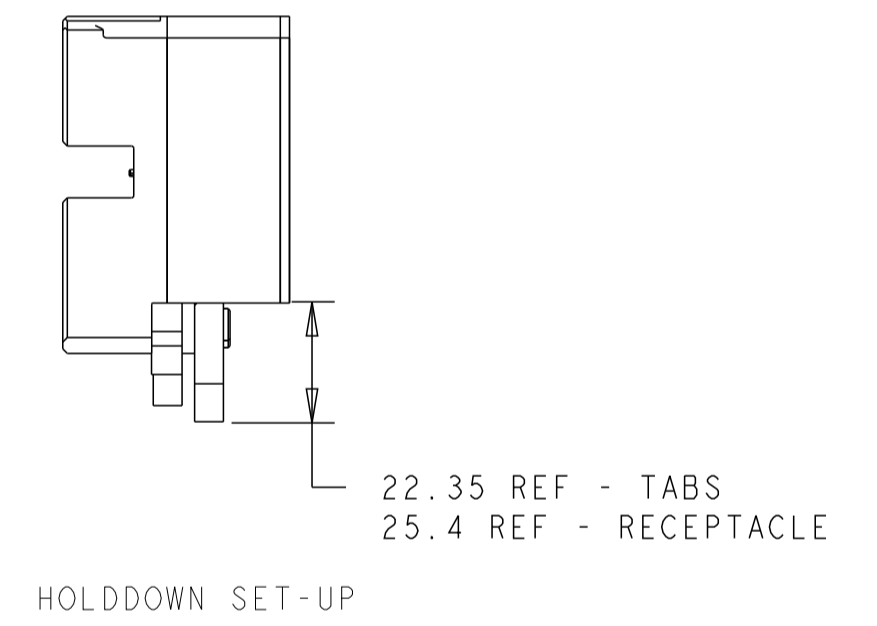
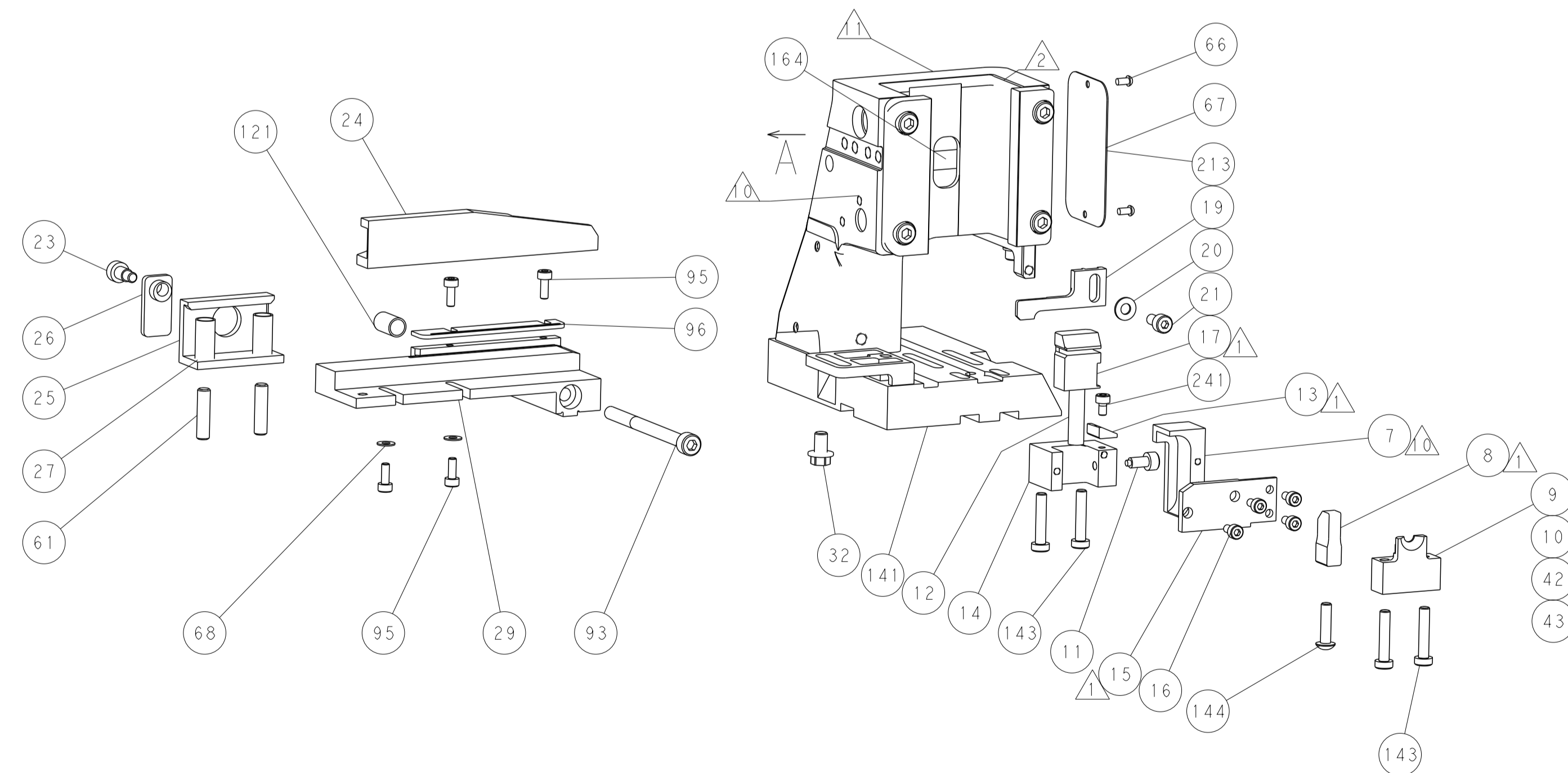
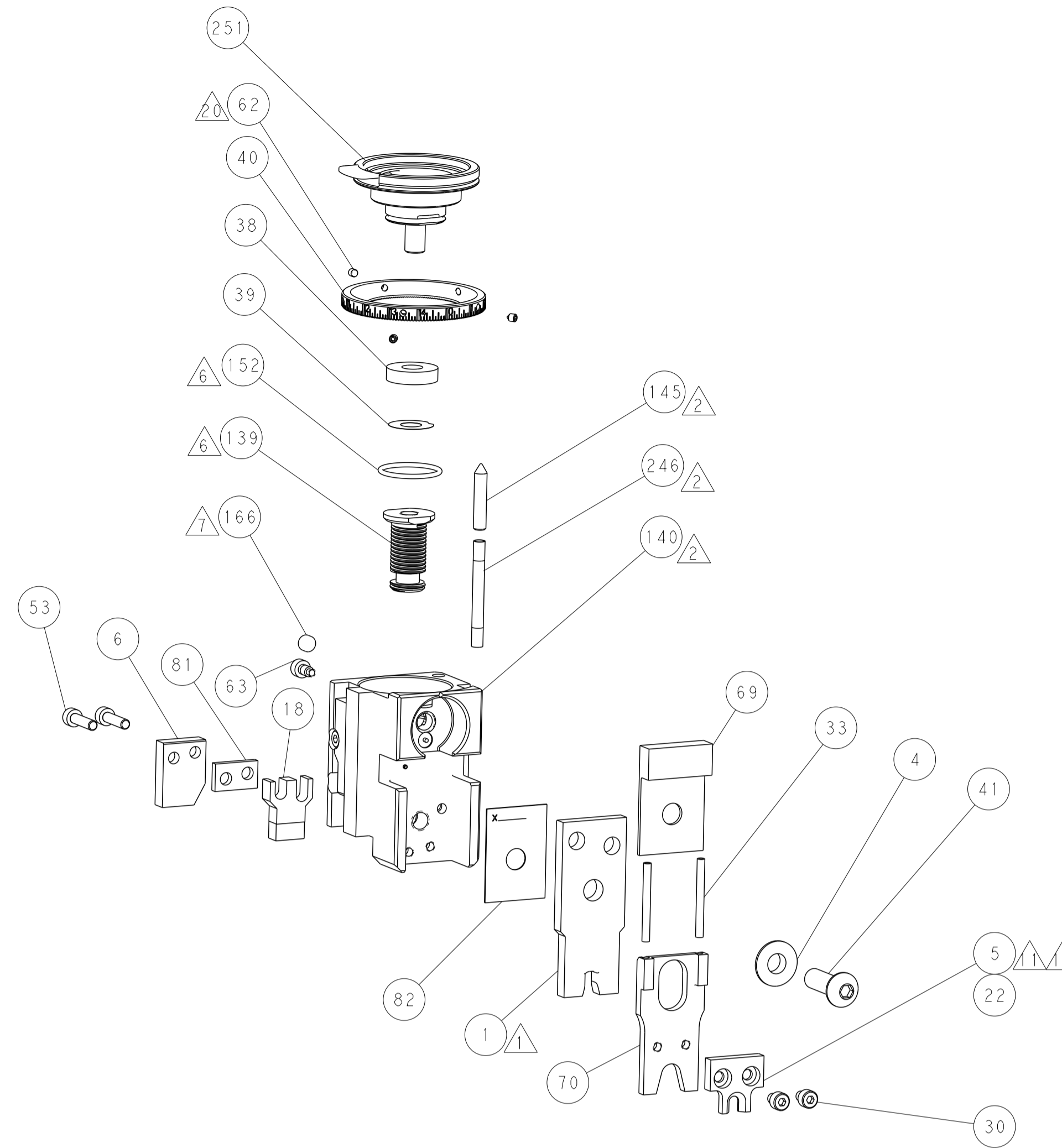


***FEED FINGER REPRESENTATION ABOVE MAY DIFFER FROM ACTUAL FEED FINGER THAT IS REQUIRED BY THIS APPLICATOR

CAM POSITION



AIR FEED



PACIFIC VERSION
 Shown on sheets 3 of 4 & 4 of 4
 (Atlantic version shown on sheets 1 of 4 & 2 of 4)

DIMENSIONS:		TOLERANCES UNLESS OTHERWISE SPECIFIED:		OWN	B. WEAVER	17OCT2011	TE Connectivity Harrisburg, PA 17105-3608
mm	0 PLC ±	1 PLC ±	2 PLC ±	CHK	G. HOFNER	17OCT2011	
MATERIAL:		FINISH:		APVD	T. ELBIN	17OCT2011	NAME
				PRODUCT SPEC			OCEAN SIDE FEED APPLICATOR
				APPLICATION SPEC			
				SIZE	CAGE CODE	DRAWING NO	RESTRICTED TO
				WEIGHT	A1	00779	©=2151032
				Customer Accessible Production Drawing			SCALE 1:2 SHEET 4 OF 4 REV D