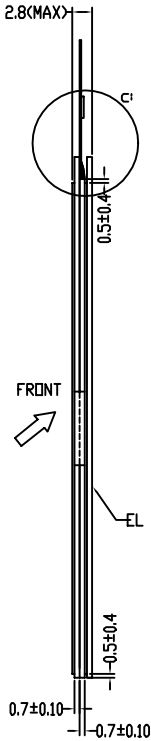
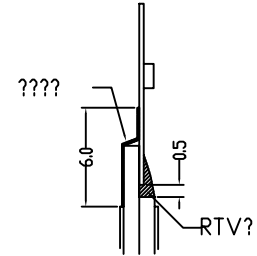


- NOTES:
- | | |
|---------------------------|------------------------|
| 1. DISPLAY TYPE: | STN/B-W MODE |
| 2. VIEWING DIRECTION: | 6:00 |
| 3. POLARIZER MODE: | TRANSFLECTIVE/POSITIVE |
| 4. DRIVE METHOD: | 1/160 DUTY 1/13 BIAS |
| 5. LCD OPERATING VOLTAGE: | 17.5V |
| 6. OPERATING TEMP.: | -20°C~+70°C |
| 7. STORAGE TEMP.: | -30°C~+80°C |
| 8. IC: | NT7701H-TABF3 x 2 |
| 9. VDD=5.0V | |
| 10. FRONT POLARIZER: | TMS-G1225-570 |
| REAR POLARIZER: | LN-1205HN-33 |
| 11. BACKLIGHT: | EL(BLUE) |
| 12. UNMARKED TOLERANCES: | ±0.3mm |

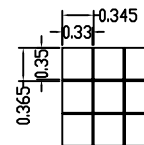
I/O 1 I/O 2:

PIN	SYMBOL	PIN	SYMBOL
1	DUMMY	17	D5
2	V0R	18	D4
3	V12R	19	D3
4	V43R	20	D2
5	V5R	21	D1
6	VSS	22	D0
7	TEST2	23	EID2
8	TEST1	24	S/C
9	MD	25	VDD
10	FR	26	L/R
11	EID1	27	VSS
12	LP	28	V5L
13	DISPOFF	29	V43L
14	XCK	30	V12L
15	D7	31	VOL
16	D6	32	DUMMY

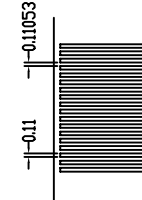
DETAIL C:



DETAIL A:



DETAIL B:



TIAN-MA MICROELECTRONICS CO.

6/F., CASTIC Building, Shennan Road, Central, Shenzhen, China

DRAWN BY:	TITLE: TM160160BCBWT1	
CHECKED BY:	DWG NO: G-1	
APPROVED BY:	DWG NAME: TM160160BCBWT1G-1	UNIT: mm
CONFIRMED BY:	SHEET NO: OF	