

**RADIATION HARDENED
 LOGIC LEVEL POWER MOSFET
 SURFACE MOUNT (SMD-0.2)**

**IRHLNM87Y20
 20V, N-CHANNEL
 R8™ TECHNOLOGY**

Product Summary

Part Number	Radiation Level	R _{DS(on)}	I _D
IRHLNM87Y20	100K Rads (Si)	15mΩ	17A*
IRHLNM83Y20	300K Rads (Si)	15mΩ	17A*



International Rectifier's R8™ Logic Level Power MOSFETs provide simple solution to interfacing CMOS and TTL control circuits to power devices in space and other radiation environments. The threshold voltage remains within acceptable operating limits over the full operating temperature and post radiation. This is achieved while maintaining single event gate rupture and single event burnout immunity.

The device is ideal when used to interface directly with most logic gates, linear IC's, micro-controllers, and other device types that operate from a 3.3-5V source. It may also be used to increase the output current of a PWM, voltage comparator or an operational amplifier where the logic level drive signal is available.

Features:

- 5V CMOS and TTL Compatible
- Fast Switching
- Single Event Effect (SEE) Hardened
- Low Total Gate Charge
- Simple Drive Requirements
- Ease of Paralleling
- Hermetically Sealed
- Surface Mount
- Light Weight
- ESD Rating: Class 1B per MIL-STD-750, Method 1020

Absolute Maximum Ratings

Pre-Irradiation

	Parameter		Units
I _D @ V _{GS} = 4.5V, T _C = 25°C	Continuous Drain Current	17*	A
I _D @ V _{GS} = 4.5V, T _C = 100°C	Continuous Drain Current	17*	
I _{DM}	Pulsed Drain Current ①	68	
P _D @ T _C = 25°C	Max. Power Dissipation	36	W
	Linear Derating Factor	0.3	W/°C
V _{GS}	Gate-to-Source Voltage	±12	V
EAS	Single Pulse Avalanche Energy ②	37	mJ
I _{AR}	Avalanche Current ①	17	A
E _{AR}	Repetitive Avalanche Energy ①	3.6	mJ
dv/dt	Peak Diode Recovery dv/dt ③	3.75	V/ns
T _J	Operating Junction	-55 to 150	°C
T _{STG}	Storage Temperature Range		
	Pckg. Mounting Surface Temp.	300 (for 5s)	
	Weight	0.25 (Typical)	g

* Current is limited by package

For footnotes refer to the last page

Electrical Characteristics @ T_J = 25°C (Unless Otherwise Specified)

	Parameter	Min	Typ	Max	Units	Test Conditions
BVDSS	Drain-to-Source Breakdown Voltage	20	—	—	V	V _{GS} = 0V, I _D = 250μA
ΔBVDSS/ΔT _J	Temperature Coefficient of Breakdown Voltage	—	0.028	—	V/°C	Reference to 25°C, I _D = 250μA
RDS(on)	Static Drain-to-Source On-State Resistance	—	12	15	mΩ	V _{GS} = 4.5V, I _D = 17A* ④ V _{GS} = 7.0V, I _D = 17A*
		—	11	14		
VGS(th)	Gate Threshold Voltage	1.0	—	2.3	V	V _{DS} = V _{GS} , I _D = 250μA
ΔVGS(th)/ΔT _J	Gate Threshold Voltage Coefficient	—	-4.2	—	mV/°C	
gfs	Forward Transconductance	20	—	—	S	V _{DS} = 15V, I _{DS} = 17A ④
IDSS	Zero Gate Voltage Drain Current	—	—	1.0	μA	V _{DS} = 16V, V _{GS} = 0V
		—	—	10		V _{DS} = 16V, V _{GS} = 0V, T _J = 125°C
IGSS	Gate-to-Source Leakage Forward	—	—	100	nA	V _{GS} = 12V
IGSS	Gate-to-Source Leakage Reverse	—	—	-100	nA	V _{GS} = -12V
Qg	Total Gate Charge	—	18	24	nC	V _{GS} = 5.5V, I _D = 17A V _{DS} = 10V
Qgs	Gate-to-Source Charge	—	5.0	7.2		
Qgd	Gate-to-Drain ('Miller') Charge	—	4.0	6.3		
td(on)	Turn-On Delay Time	—	18	24	ns	V _{DD} = 10V, I _D = 17A ⑦ V _{GS} = 5.5V, R _G = 2.35Ω
tr	Rise Time	—	73	150		
td(off)	Turn-Off Delay Time	—	24	32		
tf	Fall Time	—	10	18		
LS + LD	Total Inductance	—	1.0	—	nH	Measured from the center of drain pad to center of source pad
Ciss	Input Capacitance	—	2336	—	pF	V _{GS} = 0V, V _{DS} = 20V f = 1.0MHz
Coss	Output Capacitance	—	596	—		
Crss	Reverse Transfer Capacitance	—	147	—		
Rg	Gate Resistance	—	0.76	—	Ω	f = 1.0MHz, open drain

Source-Drain Diode Ratings and Characteristics

	Parameter	Min	Typ	Max	Units	Test Conditions
IS	Continuous Source Current (Body Diode)	—	—	17*	A	
ISM	Pulse Source Current (Body Diode) ①	—	—	68		
VSD	Diode Forward Voltage	—	—	1.0	V	T _J = 25°C, I _S = 17A, V _{GS} = 0V ④
trr	Reverse Recovery Time	—	—	41	ns	T _J = 25°C, I _F = 17A, di/dt ≤ 100A/μs
QRR	Reverse Recovery Charge	—	—	33	nC	V _{DD} ≤ 20V ④
ton	Forward Turn-On Time	Intrinsic turn-on time is negligible. Turn-on speed is substantially controlled by LS + LD.				

* Current is limited by package

Thermal Resistance

	Parameter	Min	Typ	Max	Units	Test Conditions
RthJC	Junction-to-Case	—	—	3.5	°C/W	

Note: Corresponding Spice and Saber models are available on International Rectifier Web site.

For footnotes refer to the last page

Radiation Characteristics

IRHLNM87Y20

International Rectifier Radiation Hardened MOSFETs are tested to verify their radiation hardness capability. The hardness assurance program at International Rectifier is comprised of two radiation environments. Every manufacturing lot is tested for total ionizing dose (per notes 5 and 6) using the TO-39 package. Both pre- and post-irradiation performance are tested and specified using the same drive circuitry and test conditions in order to provide a direct comparison.

Table 1. Electrical Characteristics @ Tj = 25°C, Post Total Dose Irradiation ⑤⑥

	Parameter	Upto 300K Rads (Si) ¹		Units	Test Conditions
		Min	Max		
BV _{DSS}	Drain-to-Source Breakdown Voltage	20	—	V	V _{GS} = 0V, I _D = 250μA
V _{GS(th)}	Gate Threshold Voltage	1.0	2.3		V _{GS} = V _{DS} , I _D = 250μA
I _{GSS}	Gate-to-Source Leakage Forward	—	100	nA	V _{GS} = 12V
I _{GSS}	Gate-to-Source Leakage Reverse	—	-100	nA	V _{GS} = -12V
I _{DSS}	Zero Gate Voltage Drain Current	—	1.0	μA	V _{DS} = 16V, V _{GS} = 0V
R _{DS(on)}	Static Drain-to-Source On-State Resistance (TO-39) ④	—	32	mΩ	V _{GS} = 4.5V, I _D = 10.2A
R _{DS(on)}	Static Drain-to-Source On-state Resistance (SMD-0.2) ④	—	15	mΩ	V _{GS} = 4.5V, I _D = 17A
V _{SD}	Diode Forward Voltage④	—	1.0	V	V _{GS} = 0V, I _D = 17A

1. Part numbers IRHLNM87Y20, IRHLNM83Y20

International Rectifier radiation hardened MOSFETs have been characterized in heavy ion environment for Single Event Effects (SEE). Single Event Effects characterization is illustrated in Fig. a and Table 2.

Table 2. Typical Single Event Effect Safe Operating Area

LET (MeV/(mg/cm ²))	Energy (MeV)	Range (μm)	VDS (V)					
			@VGS=0V	@VGS=-1V	@VGS=-2V	@VGS=-3V	@VGS=-5V	@VGS=-10V
37 ± 5%	298 ± 5%	38 ± 5%	18	18			8	4
60 ± 5%	320 ± 5%	32 ± 7.5%	18	18	15	12	8	-
81 ± 5%	375 ± 7.5%	28 ± 7.5%	18	18		12	6	-

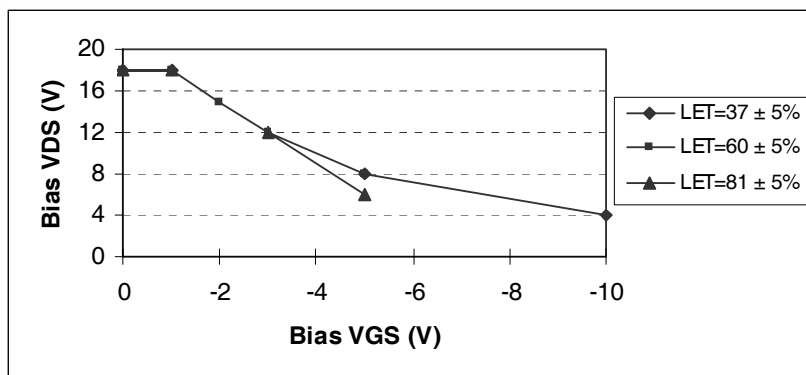


Fig a. Typical Single Event Effect, Safe Operating Area

For footnotes refer to the last page

www.irf.com

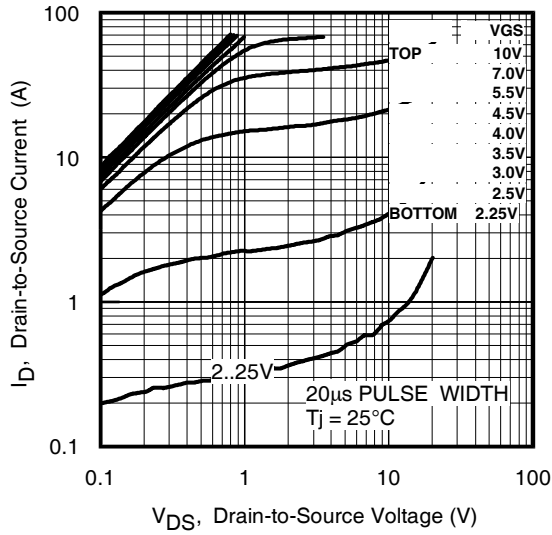


Fig 1. Typical Output Characteristics

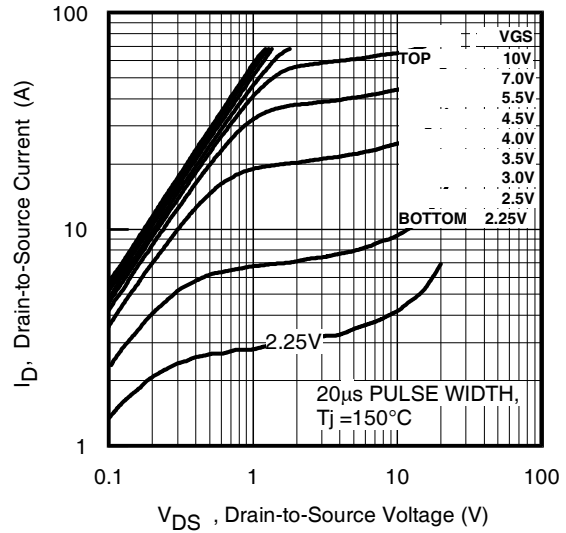


Fig 2. Typical Output Characteristics

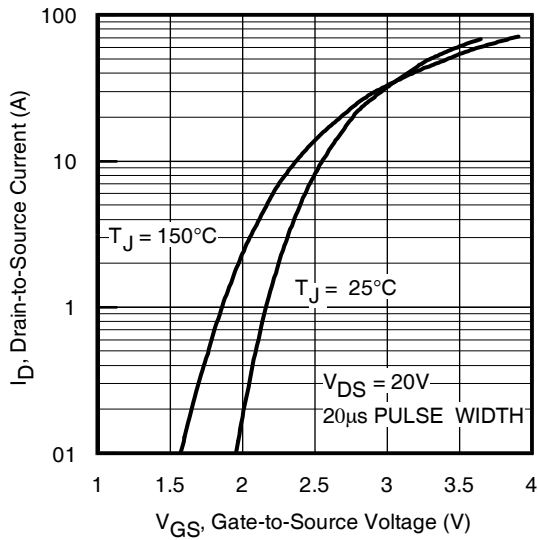


Fig 3. Typical Transfer Characteristics

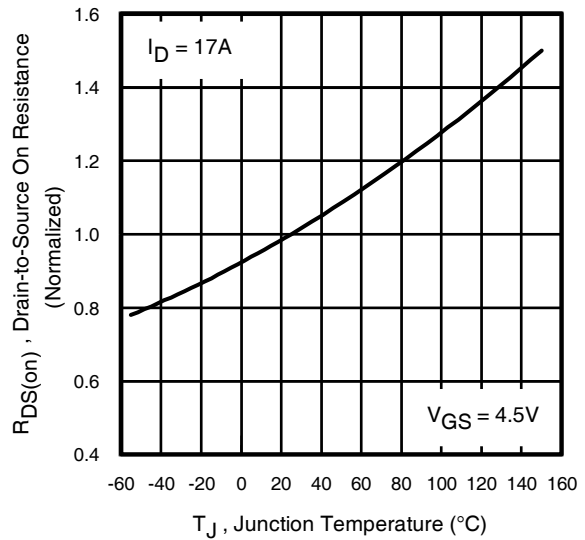


Fig 4. Normalized On-Resistance Vs. Temperature

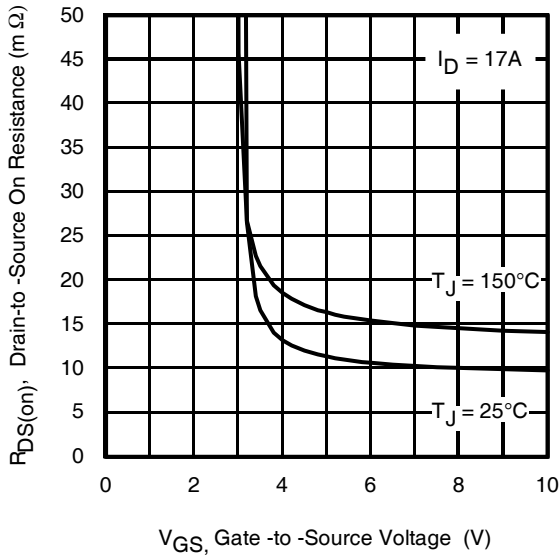


Fig 5. Typical On-Resistance Vs Gate Voltage

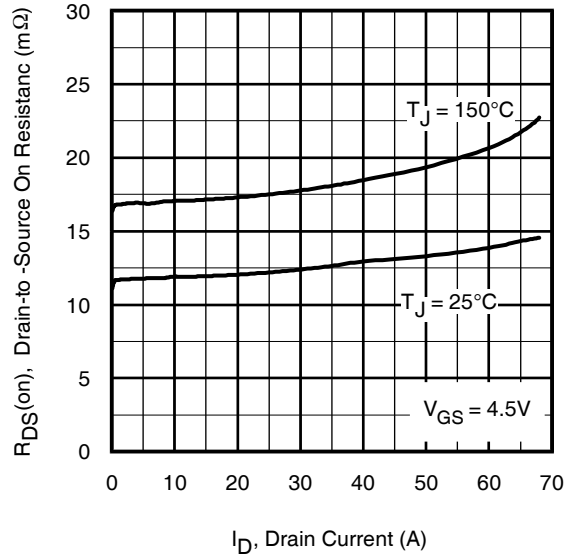


Fig 6. Typical On-Resistance Vs Drain Current

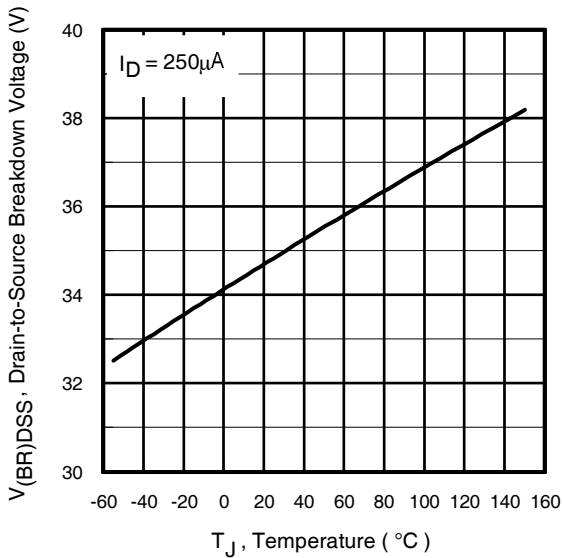


Fig 7. Typical Drain-to-Source Breakdown Voltage Vs Temperature

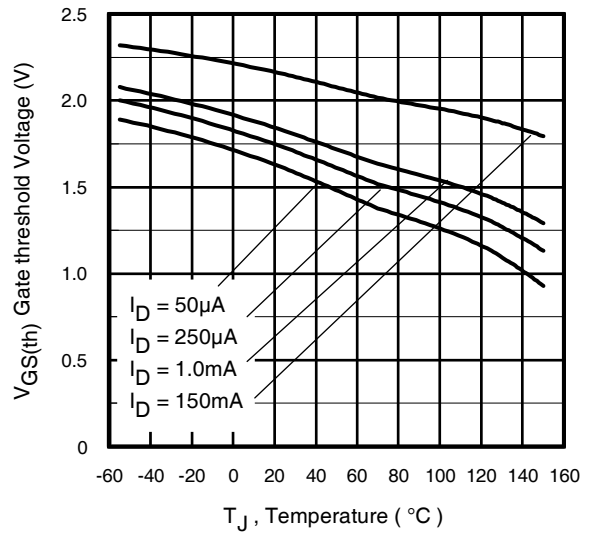


Fig 8. Typical Threshold Voltage Vs Temperature

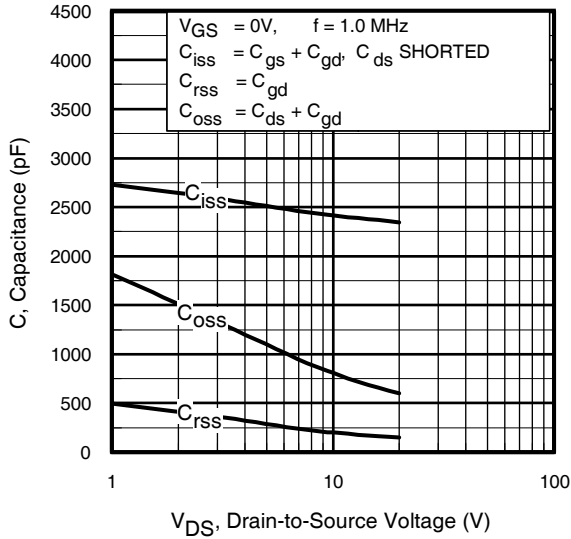


Fig 9. Typical Capacitance Vs. Drain-to-Source Voltage

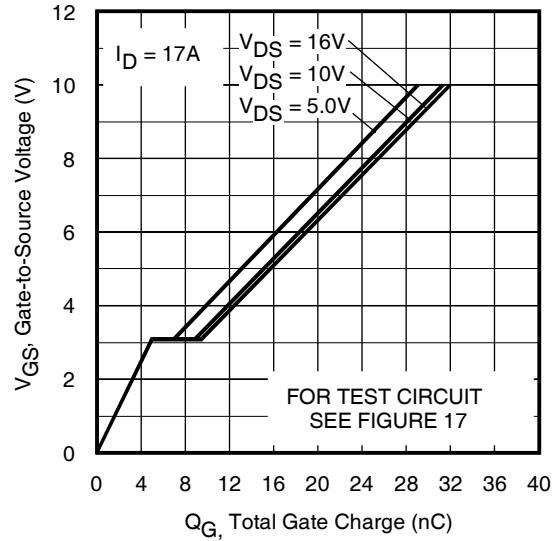


Fig 10. Typical Gate Charge Vs. Gate-to-Source Voltage

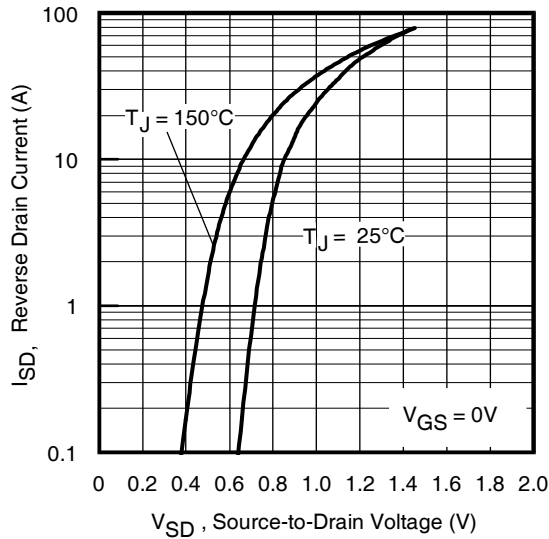


Fig 11. Typical Source-to-Drain Diode Forward Voltage

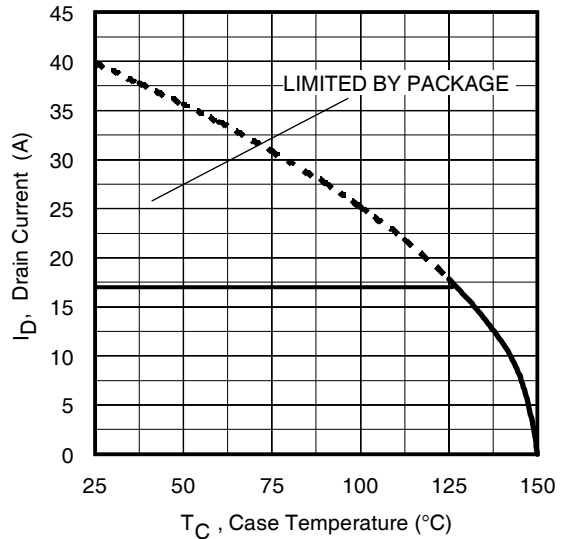


Fig 12. Maximum Drain Current Vs. Case Temperature

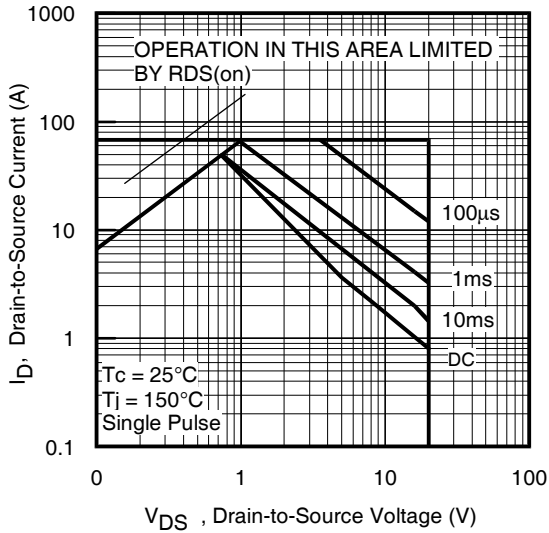


Fig 13. Maximum Safe Operating Area

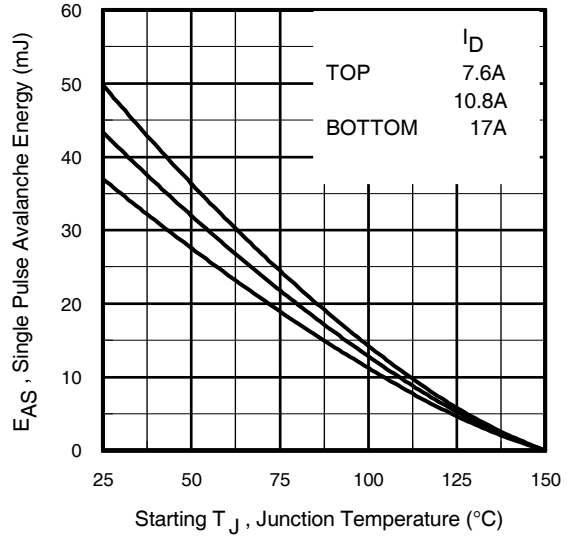


Fig 14. Maximum Avalanche Energy Vs. Drain Current

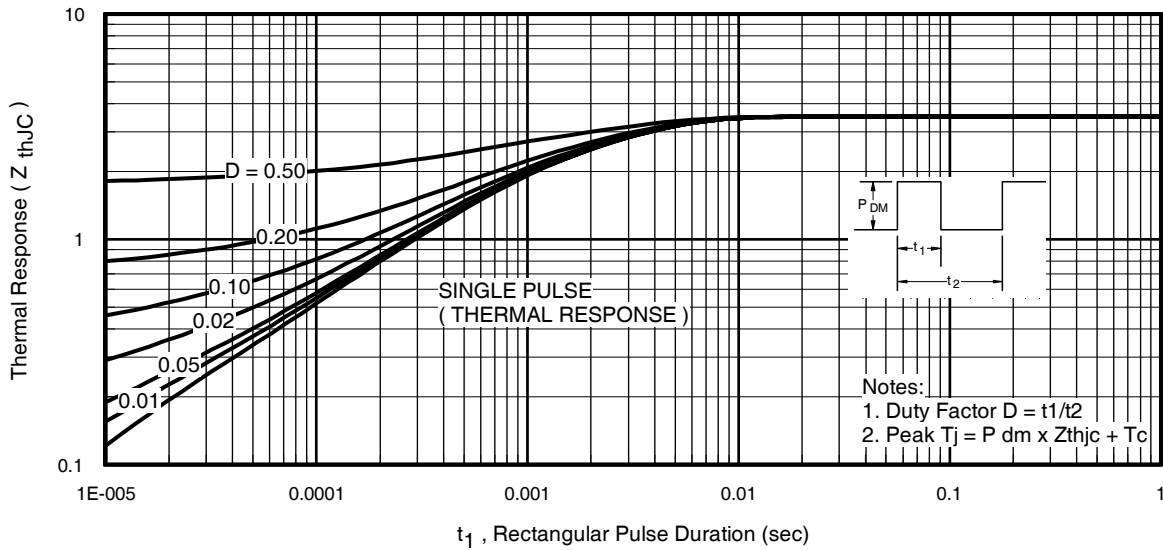


Fig 15. Maximum Effective Transient Thermal Impedance, Junction-to-Case

IRHLNM87Y20

Pre-Irradiation

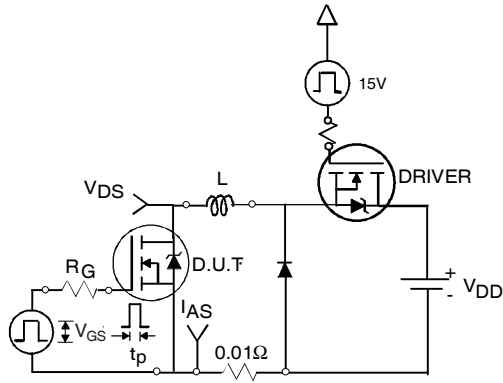


Fig 16a. Unclamped Inductive Test Circuit

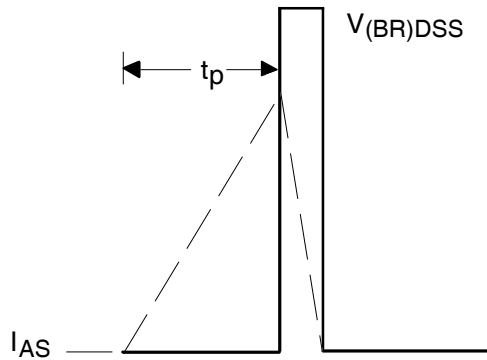


Fig 16b. Unclamped Inductive Waveforms

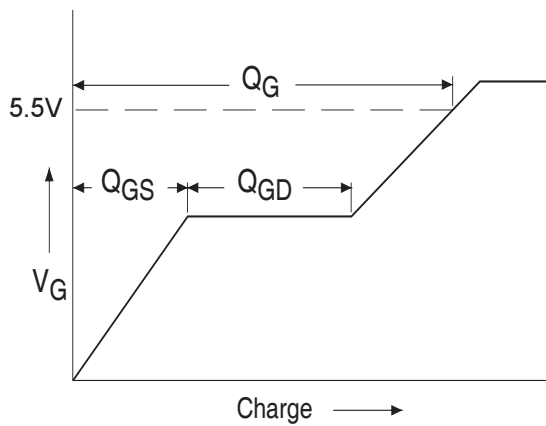


Fig 17a. Basic Gate Charge Waveform

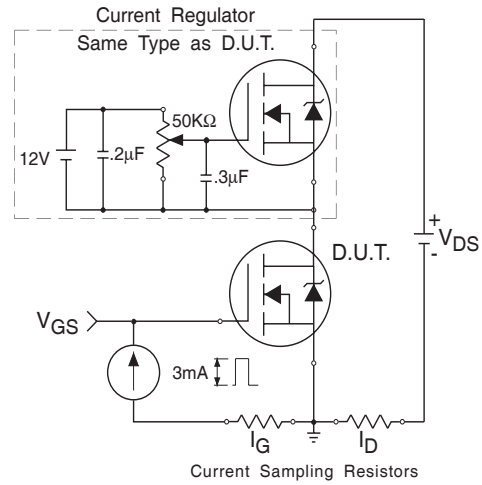


Fig 17b. Gate Charge Test Circuit

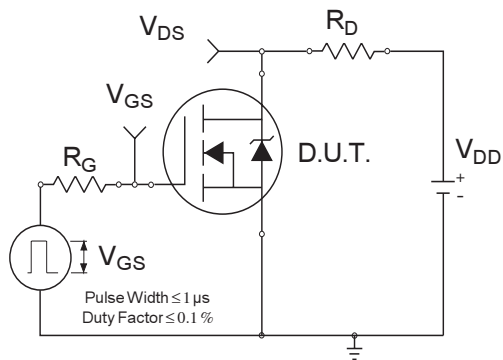


Fig 18a. Switching Time Test Circuit

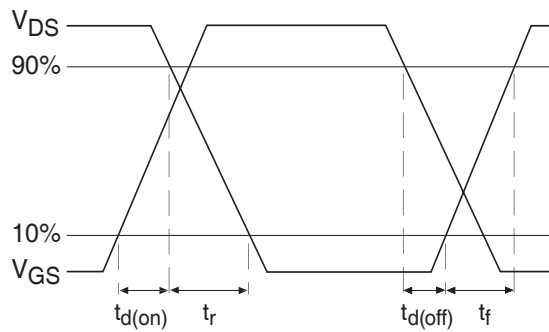
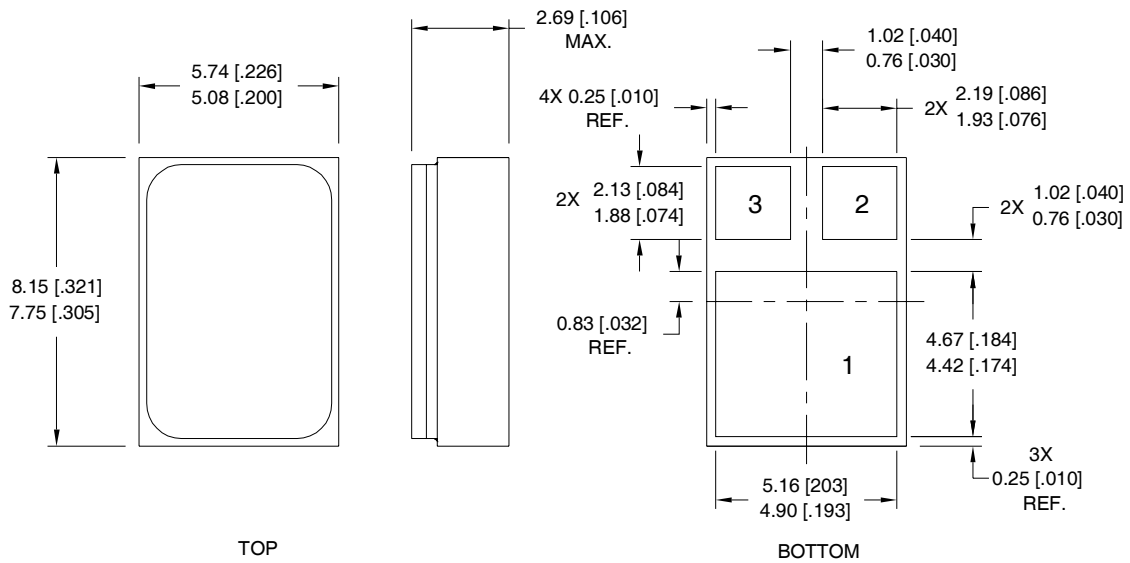


Fig 18b. Switching Time Waveforms

Footnotes:

- ① Repetitive Rating; Pulse width limited by maximum junction temperature.
- ② $V_{DD} = 20V$, starting $T_J = 25^\circ C$, $L = 0.26mH$
Peak $I_L = 17A$, $V_{GS} = 12V$
- ③ $I_{SD} \leq 17A$, $di/dt \leq 419A/\mu s$,
 $V_{DD} \leq 20V$, $T_J \leq 150^\circ C$
- ④ Pulse width $\leq 300 \mu s$; Duty Cycle $\leq 2\%$
- ⑤ **Total Dose Irradiation with V_{GS} Bias.**
12 volt V_{GS} applied and $V_{DS} = 0$ during irradiation per MIL-STD-750, method 1019, condition A.
- ⑥ **Total Dose Irradiation with V_{DS} Bias.**
16 volt V_{DS} applied and $V_{GS} = 0$ during irradiation per MIL-STD-750, method 1019, condition A.
- ⑦ Switching speed maximum limits are based on manufacturing test equipment and capability.

Case Outline and Dimensions — SMD-0.2 (Metal Lid)



NOTES:

- 1. DIMENSIONING & TOLERANCING PER ASME Y14.5M-1994.
- 2. CONTROLLING DIMENSION: INCH.
- 3. DIMENSIONS ARE SHOWN IN MILLIMETERS [INCHES].

PAD ASSIGNMENT

- 1 = DRAIN
- 2 = GATE
- 3 = SOURCE



IR WORLD HEADQUARTERS: 101 N. Sepulveda Blvd., El Segundo, California 90245, USA Tel: (310) 252-7105
IR LEOMINSTER : 205 Crawford St., Leominster, Massachusetts 01453, USA Tel: (978) 534-5776
 TAC Fax: (310) 252-7903

Visit us at www.irf.com for sales contact information.
 Data and specifications subject to change without notice. 07/2013