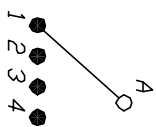
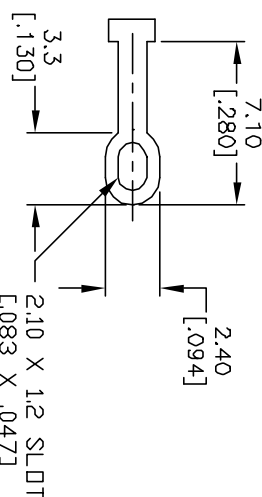


NOTES:

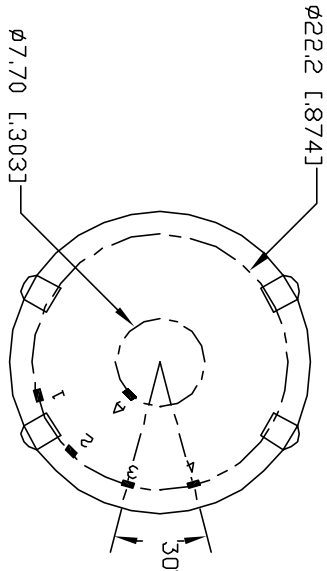
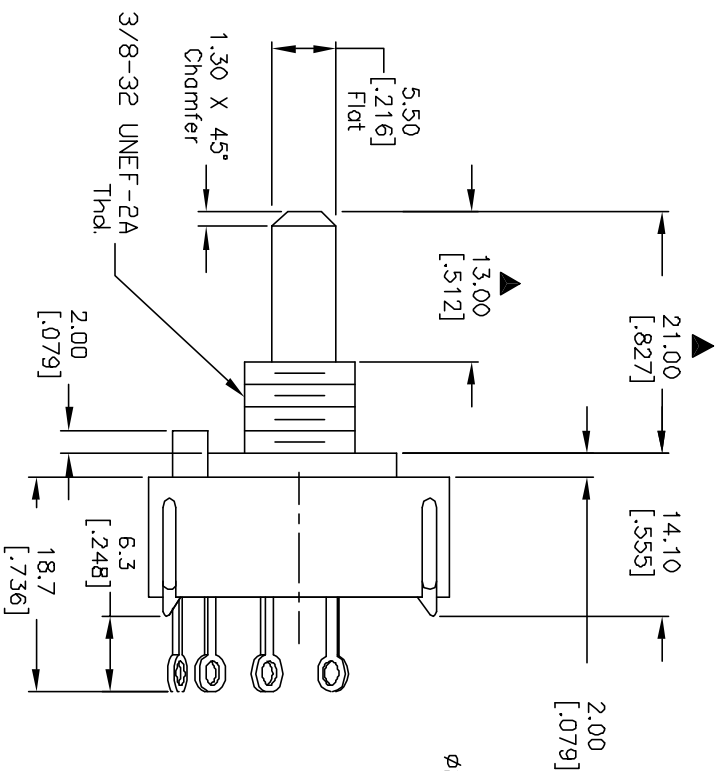
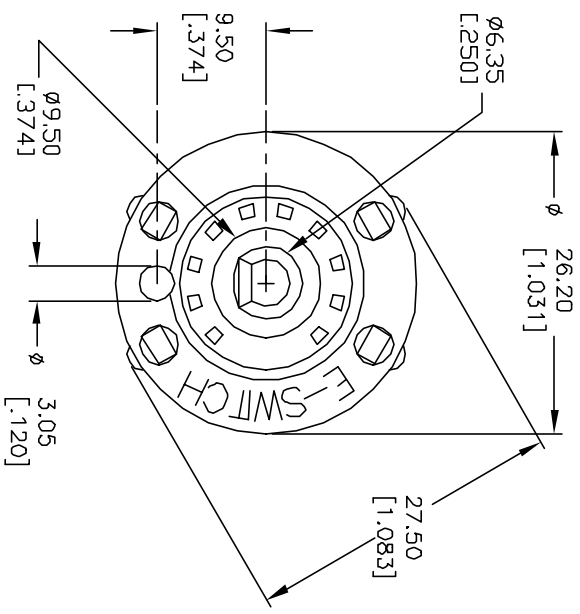
1. ALL DIMENSION IN MM [INCH]
2. GENERAL TOLERANCE: X.X=±0.4  
X.XX=±0.25
3. TERM. NOS. FOR REF. ONLY
4. CONTACT RATING SWITCHING: 150mA, 250V AC/DC  
350mA, 110V AC/DC
5. OPERATING FORCE: 425±100 CM/STANDARD
6. OPERATING TEMP: -30° to 85°C
7. CIRCUIT SP: 4 POSITIONS, 30° INDEX.
8. DESIGNATE MAJOR DIMENSIONS
9. LOCK NUT AND WASHER NOT SHOWN.



CONTACT CONFIGURATION (BBM)



TERMINATION DETAIL SCALE 2X



**E-SWITCH®**

KC-14-A-01-N-L-S (B=21mm)

REV.	ECN No.	DESCRIPTION	DATE	CHKD
A	11272	RELEASED FOR PRODUCTION	2/27/01	CJB

TITLE	SCALE	DATE	DR	DWG	REV
KC-14-A-01-N-L-S (B=21mm)	1.5:1	2/27/01	CJB	G510280	A

THE INFORMATION CONTAINED IN THIS DOCUMENT IS PROPRIETARY TO E-SWITCH AND IS NOT TO BE COPIED OR TRANSFERRED