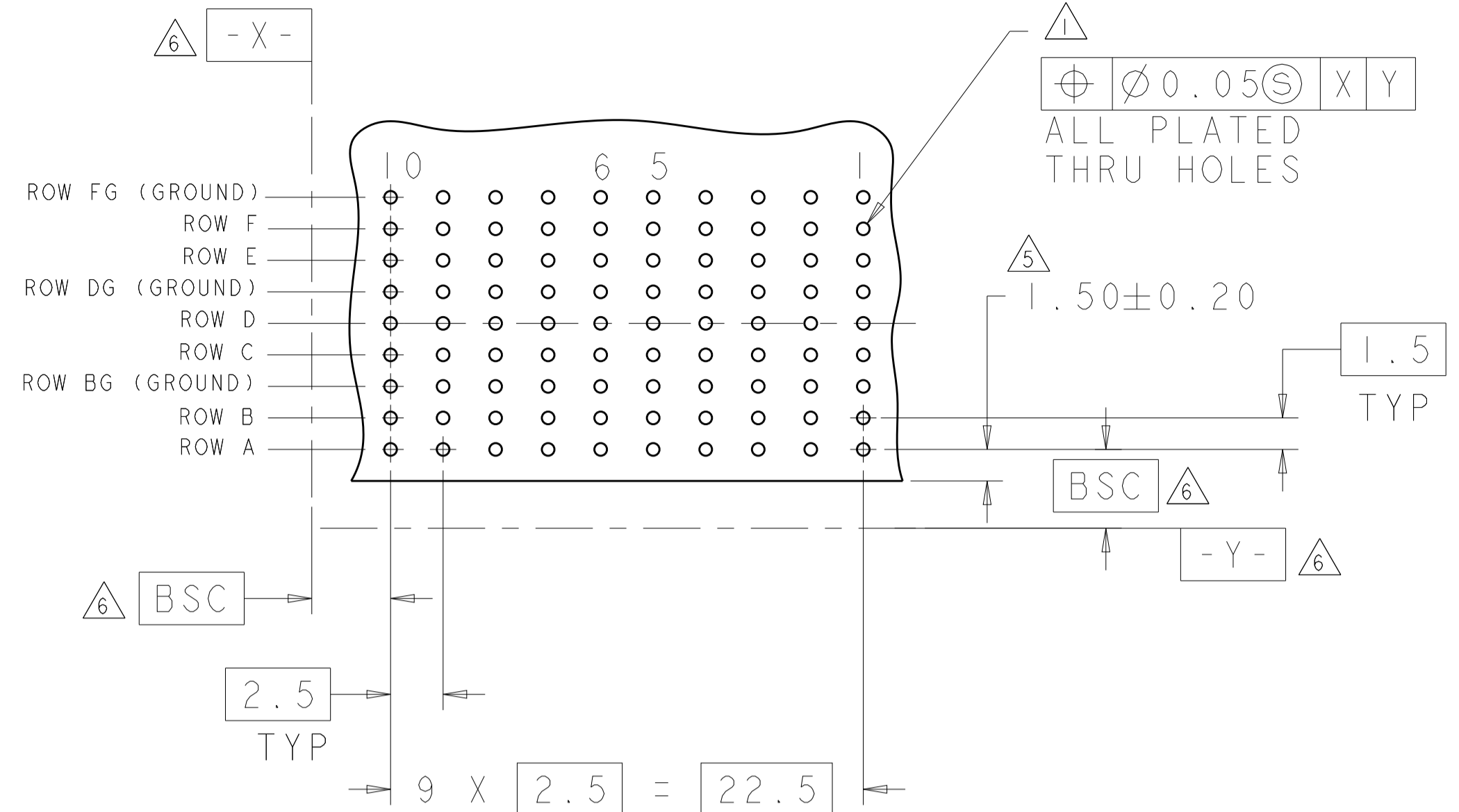
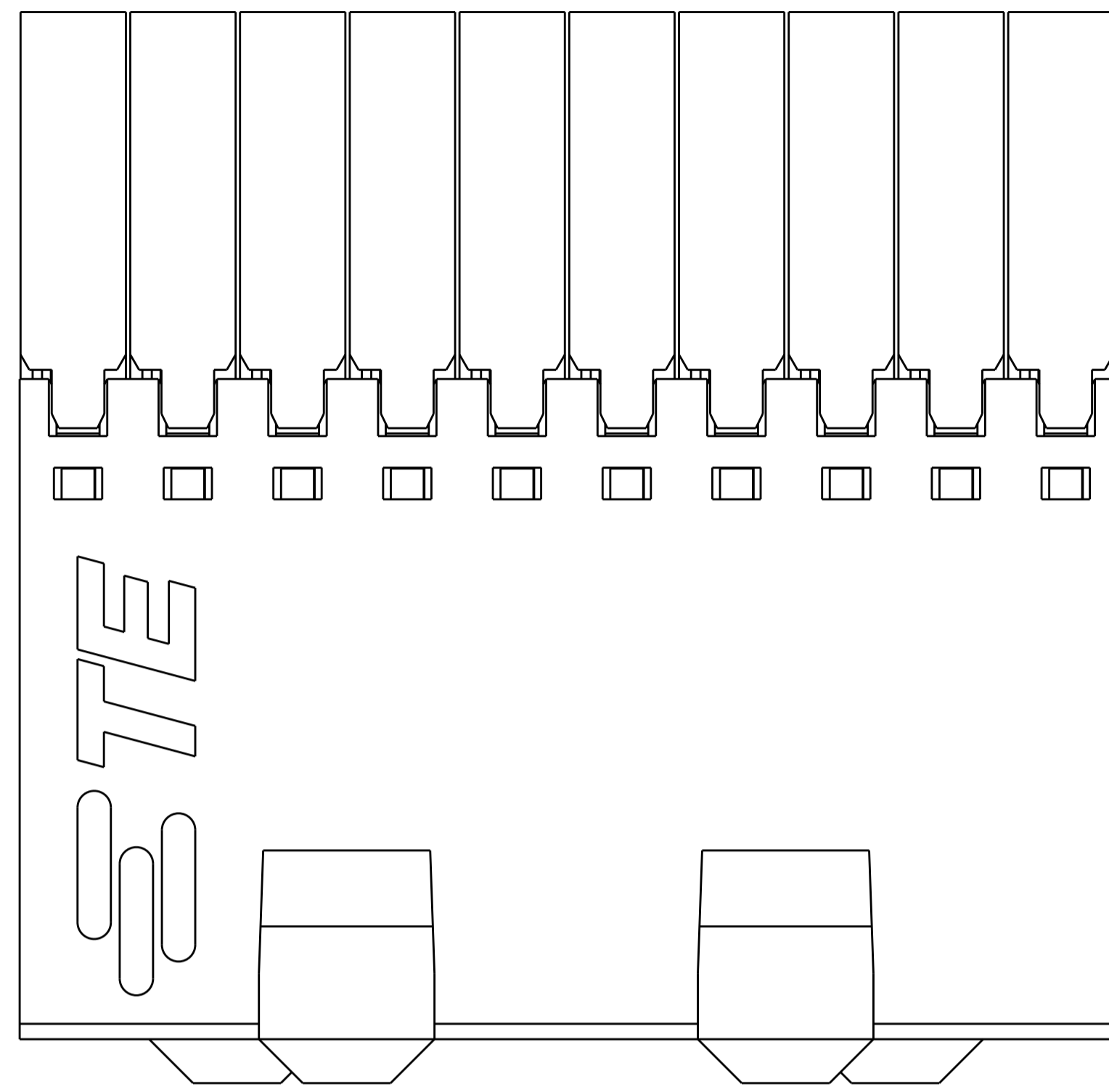
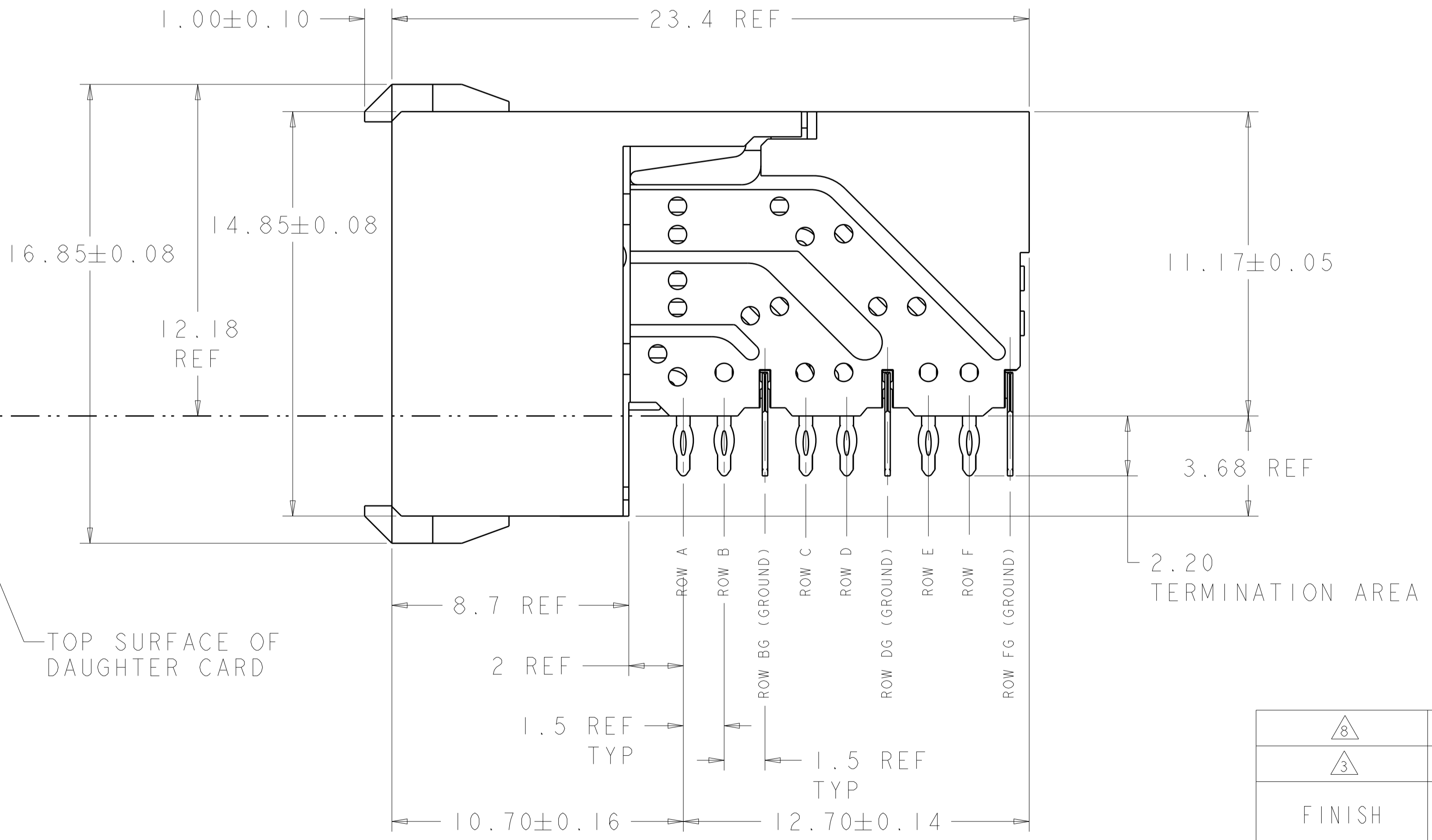
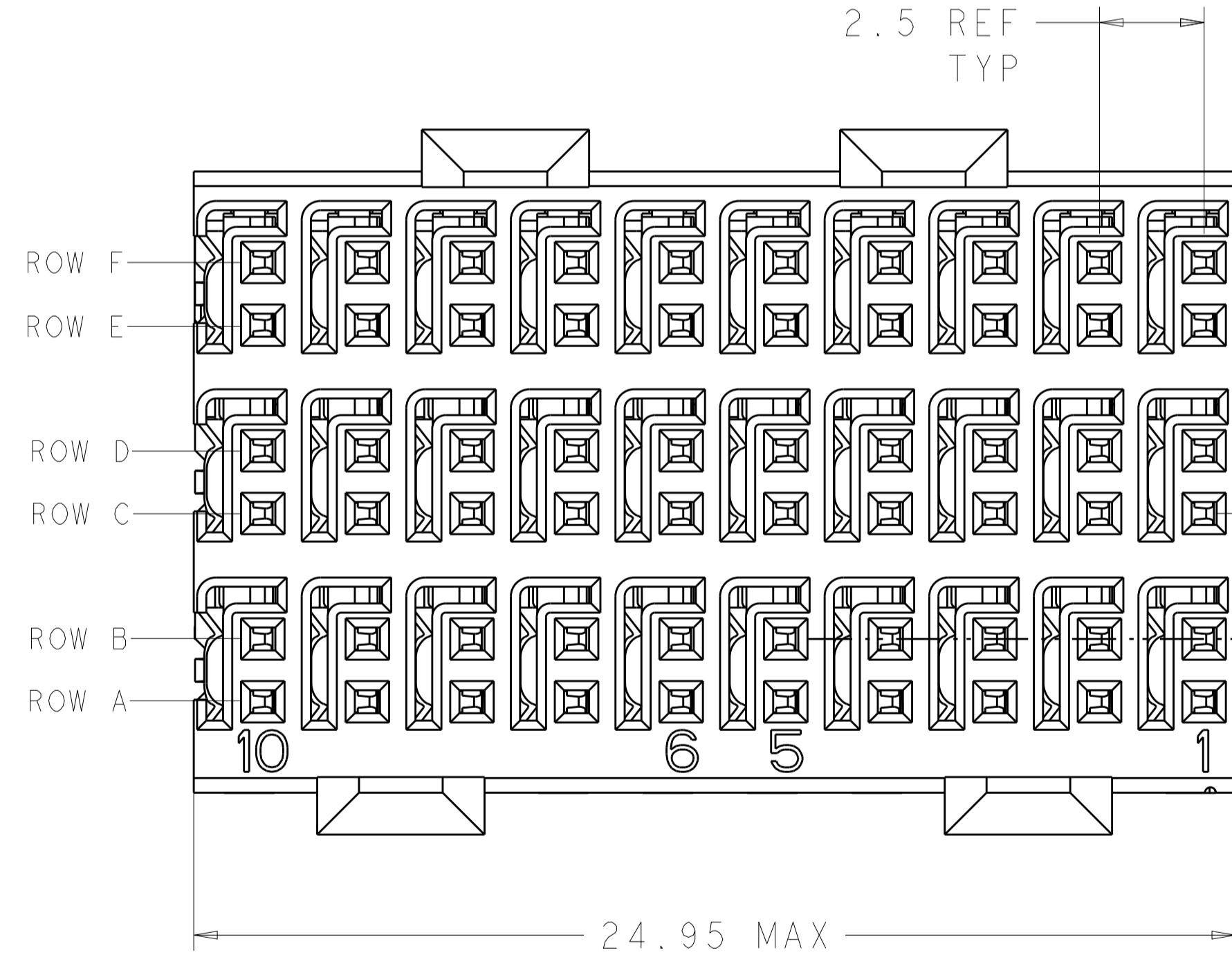


REVISIONS				
P.	LTN	DESCRIPTION	DATE	APPROV
E		REVISED PER ECO-14-005095	11APR2014	AP RP
F		REVISED PER ECO-16-008845	21SEP2016	AP RP



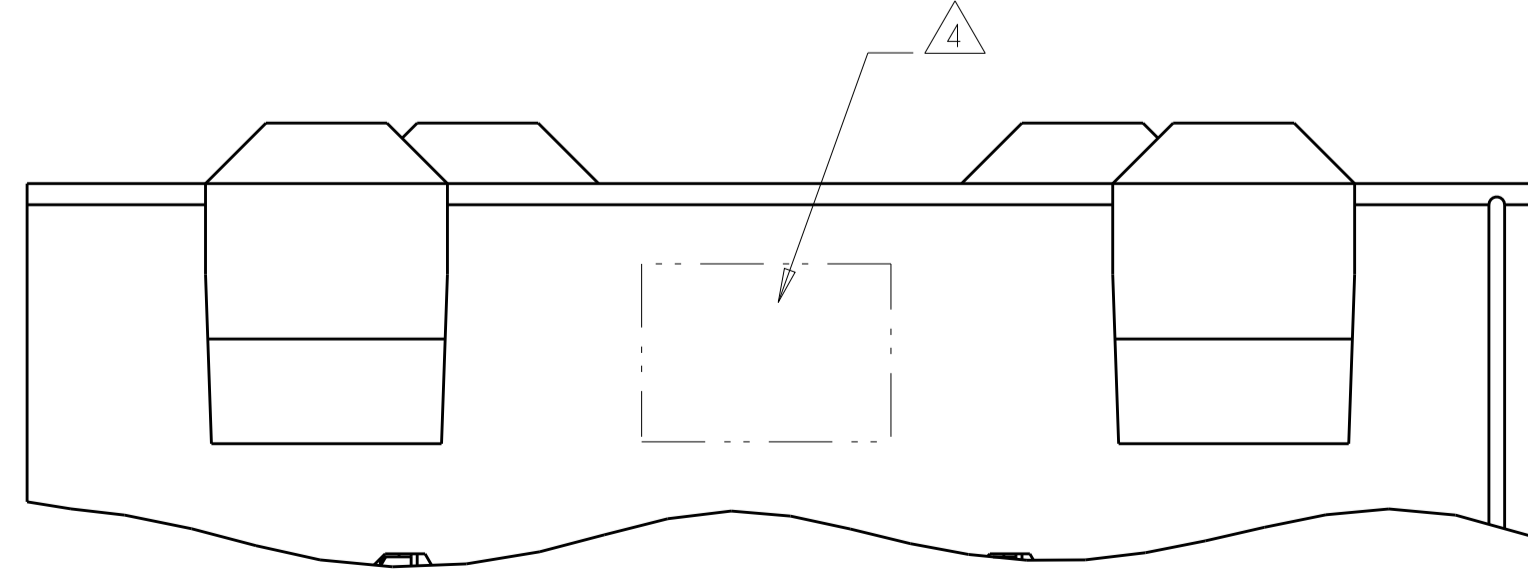
RECOMMENDED PC BOARD LAYOUT,
 DAUGHTER BOARD,
 COMPONENT SIDE SHOWN
 SCALE 4:1

- △ REFERENCE APPLICATION SPEC 114-13059 FOR RECOMMENDED PLATED THRU HOLE DIAMETER AND PLATING THICKNESSES.
- △ MATERIAL:
 SHIELD - PHOSPHOR BRONZE
 CONTACT - COPPER-NICKEL-SILICON
 HOUSING, CHICKLET AND CHICKLET COVER - GLASS FILLED POLYESTER, UL 94V-0 RATED.
- △ FINISH: SIGNAL AND GROUND CONTACTS:
 MATING AREA: MEETS THE PERFORMANCE REQUIREMENTS OF PRODUCT SPECIFICATION 108-2055; BASED ON TELCORDIA GR-1217-CORE, APPLICATIONS IN UNCONTROLLED ENVIRONMENTS
 COMPLIANT PIN AREA: 0.5µm MIN BRIGHT TIN-LEAD OVER BASE PLATING
- △ CONNECTOR MARKED WITH PART NUMBER AND DATE CODE IN APPROXIMATE AREA SHOWN.
- △ DIMENSION APPLIES TO CENTERLINE OF THRU HOLE
- △ DATUMS AND BASIC DIMENSIONS ESTABLISHED BY CUSTOMER
- 7. CONTACT AREA LUBRICATED WITH BELLCORE APPROVED LUBRICANT. TECHNICAL REFERENCE: GR-1217-CORE, ISSUE 1, NOVEMBER 1995.
- △ FINISH: CONTACT AND SHIELD
 MATING AREA - 1.27µm MIN GOLD OVER 1.27µm MIN NICKEL
 COMPLIANT PIN AREA - 0.05µm MIN BRIGHT TIN-LEAD OVER 1.27µm MIN NICKEL



TOP SURFACE OF DAUGHTER CARD

△ 8	1469081-2
△ 3	1469081-1
FINISH	PART NUMBER



THIS DRAWING IS A CONTROLLED DOCUMENT.		OWN S. MAGARO 13MAY2002	TE Connectivity	
DIMENSIONS: mm		CHK N. SCHROLL 13MAY2002	RECEPTACLE ASSEMBLY, 3 PAIR, 25mm, HMZd	
TOLERANCES UNLESS OTHERWISE SPECIFIED:		APVD B. PATTERSON 16MAY2007	SIZE CAGE CODE DRAWING NO RESTRICTED TO	
0 PLC ±0.15		PRODUCT SPEC	A100779C=1469081	
1 PLC ±0.15		APPLICATION SPEC	SCALE 8:1 SHEET 1 OF 1 REV F	
2 PLC ±0.15		WEIGHT		
3 PLC ±0.15		CUSTOMER DRAWING		
4 PLC ±0.15				
ANGLES ±1°				
MATERIAL FINISH SEE TABLE				