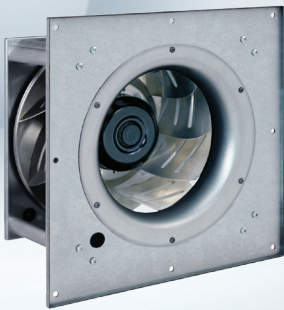


EC centrifugal fans

backward curved, single inlet, Ø 560



Highlights:

- 9-blade fan, 3-phase fan motor
- 10 VDC max. output/10 mA, 20 VDC max. output/50 mA, 0-10 V slave output, 24 V external program input, 0-10 VDC / PWM control input, 0-10V or 4-20 mA sensor input, external release input
- Integrated PID controller, control interface with SELV potential safely disconnected from the mains, RS485 MODBUS RTU technology
- Over-temperature protected electronics / motor, operation and alarm display, alarm relay
- Soft start, PFC passive, line undervoltage / phase failure detection

Material: Impeller: Aluminum sheet
 Rotor: Coated in black
 Electronic housing: Die-cast aluminum
 Assembly: Galvanized steel with aluminum posts

Mounting position: Shaft horizontal or rotor on bottom; rotor on top on request

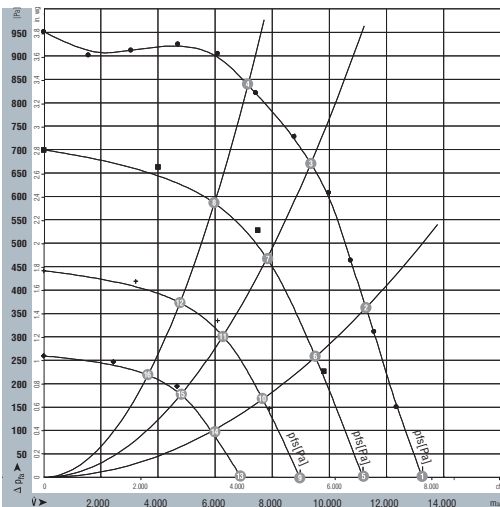
Condensate discharge holes: Rotor-side

Nominal Data

Type	RadiPac	Motor	Air flow		Frequency	Power input (1)	Speed (1)	Current draw (1)	Temperature range (1)	Mass	Ingress protection rating	Electrical wiring diagram	UL
			CFM	VAC									
R3G560-AH29-66F	EG1R-240-560-30	M3G150-IF	7,775	200...240	50/60	3,000	1,520	8.5	-25...45	65	IP54	A	Yes
R3G560-AH23-65F	EG1R-480-560-30	M3G150-IF	7,775	380...480	50/60	3,000	1,520	4.0	-25...60	65	IP54	A	Yes

(1) Nominal data at maximum load.

Curves



Measurement: LU-118570
 Measurement: LU-120955
 Measurement: LU-120956
 Measurement: LU-120957

Air performance measured as per: ISO 5801, Installation category A, without protection against accidental contact.

Suction-side noise levels: LwA as per ISO 13347, LpA measured at 1m distance to fan axis.

The values given are valid under the measuring conditions mentioned and may vary according to the actual installation situation.

With any deviation to the standard set-up, the specific values have to be checked and reviewed once installed or fitted.

For detailed information on the measuring set-up, please contact ebm-papst.

	n rpm	Pe W	I A (460V)	I A (230V)	LwA _{in} dB(A)
1	1520	2029	2.7	5.8	87
2	1520	2636	3.5	7.8	84
3	1520	3000	4.0	8.5	82
4	1520	2981	4.0	8.0	83
5	1260	1156	1.6	3.3	81
6	1260	1519	2.0	4.4	79
7	1260	1730	2.3	4.9	78
8	1260	1619	2.2	4.6	78
9	1000	617	0.9	1.6	75
10	1000	799	1.1	2.2	73
11	1000	908	1.2	2.4	72
12	1000	839	1.2	2.2	73
13	760	302	0.5	0.7	68
14	760	378	0.6	1.0	69
15	760	423	0.6	1.0	67
16	760	392	0.6	1.0	67

