



Features

- Frequency Range: 20~1000MHz
- P₋₁: 18.5dBm(typ)
- Low Noise: 1.4dB(Typ)
- Standard Hermetic Package
- Operating Temperature Range: -55°C~+85°C

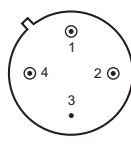
Electrical (50 Ω, V_{CC}=+5V, T_A=-55°C~+85°C)

Parameter	Symbol	Unit	Guaranteed	Typical
Frequency Range	f _L ~f _H	MHz	20~1000	20~1000
Gain	G _p	dB	≥10	11.5
Gain Flatness	ΔG _p	dB	≤1	0.5
Noise Figure	F _n	dB	≤2.0 Δ	1.4
Input VSWR	VSWR _i	--	≤2.0:1 Δ	1.4:1
Output VSWR	VSWR _o	--	≤2.0:1 Δ	1.3:1
For 1dB Compression	P ₋₁	dBm	≥18.0*Δ	18.5
Supply Current	I _{CC}	mA	≤70	50

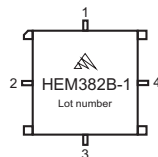
Note: "*" f=500 MHz. "Δ" T_A=24±1°C.

Maximum Ratings

- Power supply: +7V_{DC}
- RF input: +10dBm
- Storage Temp: +125°C



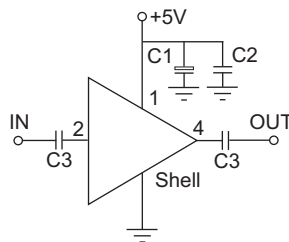
TO-8C



SMO-8C

Application Notes

1. Typical application shown as right, C₁=3.3~22 μF, C₂=3300~6800pF, C₃=1000~10000pF.
2. ESD observe handling precautions.
3. Connectorized package (SMA-3) available.
4. See assembly section for outline and mounting information.



Typical Curves

