

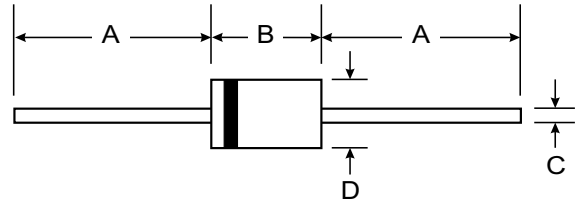
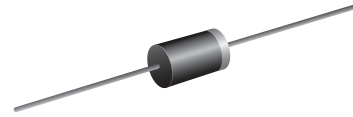
VOLTAGE RANGE: 3.6 - 200V
POWER: 2.0Watts

Features

- Complete Voltage Range 3.6 to 200 Volts
- High peak reverse power dissipation
- High reliability
- Low leakage current

Mechanical Data

- Case : DO-15 Molded plastic
- Epoxy : UL94V-O rate flame retardant
- Lead : Axial lead solderable per MIL-STD-202, method 208 guaranteed
- Polarity : Color band denotes cathode end
- Mounting position : Any
- Weight : 0.465 gram



DO-15		
Dim	Min	Max
A	25.40	—
B	5.50	7.62
C	0.686	0.889
D	2.60	3.60
All Dimensions in mm		

Maximum Ratings and Electrical Characteristics @ T_A = 25°C unless otherwise specified

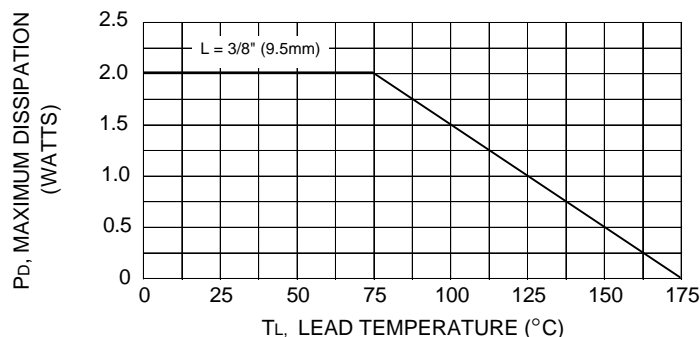
Single phase, half wave, 60Hz, resistive or inductive load.

Rating	Symbol	Value	Unit
DC Power Dissipation at T _L = 75 °C (Note1)	P _D	2.0	Watts
Maximum Forward Voltage at I _F = 200 mA	V _F	1.2	Volts
Maximum Thermal Resistance Junction to Ambient Air (Note2)	R _{θJA}	60	K / W
Junction Temperature Range	T _J	- 55 to + 175	°C
Storage Temperature Range	T _S	- 55 to + 175	°C

Note :

- (1) T_L = Lead temperature at 3/8 " (9.5mm) from body
- (2) Valid provided that leads are kept at ambient temperature at a distance of 10 mm from case.

Fig. 1 POWER TEMPERATURE DERATING CURVE





TYPE	Nominal Zener Voltage		Maximum Zener Impedance			Maximum Reverse Leakage Current		Maximum DC Zener Current
	Vz @ IzT	IzT	ZzT @ IzT	Zzk @ Izk	Izk	IR @ VR		IzM
	(V)	(mA)	(Ω)	(Ω)	(mA)	(μ A)	(V)	(mA)
2EZ3.6D5L	3.6	139	5.0	400	1.0	80	1.0	504
2EZ3.9D5L	3.9	128	5.0	400	1.0	30	1.0	468
2EZ4.3D5L	4.3	116	4.5	400	1.0	20	1.0	434
2EZ4.7D5L	4.7	106	4.5	550	1.0	5.0	1.0	386
2EZ5.1D5L	5.1	98.0	3.5	600	1.0	5.0	1.0	356
2EZ5.6D5L	5.6	89.5	2.5	500	1.0	5.0	2.0	324
2EZ6.2D5L	6.2	80.5	1.5	700	1.0	5.0	3.0	292
2EZ6.8D5L	6.8	73.5	2.0	700	1.0	5.0	4.0	266
2EZ7.5D5L	7.5	66.5	2.0	700	0.5	50	5.0	242
2EZ8.2D5L	8.2	61.0	2.3	700	0.5	50	6.0	220
2EZ9.1D5L	9.1	55.0	2.5	700	0.5	50	7.0	200
2EZ10D5L	10	50.0	3.5	700	0.25	50	7.6	182
2EZ11D5L	11	45.5	4.0	700	0.25	50	8.4	166
2EZ12D5L	12	41.5	4.5	700	0.25	1.0	9.1	152
2EZ13D5L	13	38.5	5.0	700	0.25	0.5	9.9	138
2EZ14D5L	14	35.7	5.5	700	0.25	0.5	10.6	130
2EZ15D5L	15	33.4	7.0	700	0.25	0.5	11.4	122
2EZ16D5L	16	31.2	8.0	700	0.25	0.5	12.2	114
2EZ17D5L	17	29.4	9.0	750	0.25	0.5	13.0	107
2EZ18D5L	18	27.8	10	750	0.25	0.5	13.7	100
2EZ19D5L	19	26.3	11	750	0.25	0.5	14.4	95
2EZ20D5L	20	25.0	11	750	0.25	0.5	15.2	90
2EZ22D5L	22	22.8	12	750	0.25	0.5	16.7	82
2EZ24D5L	24	20.8	13	750	0.25	0.5	18.2	76
2EZ27D5L	27	18.5	18	750	0.25	0.5	20.6	68
2EZ30D5L	30	16.6	20	1000	0.25	0.5	22.5	60
2EZ33D5L	33	15.1	23	1000	0.25	0.5	25.1	55
2EZ36D5L	36	13.9	25	1000	0.25	0.5	27.4	50
2EZ39D5L	39	12.8	30	1000	0.25	0.5	29.7	47
2EZ43D5L	43	11.6	35	1500	0.25	0.5	32.7	43
2EZ47D5L	47	10.6	40	1500	0.25	0.5	35.8	39
2EZ51D5L	51	9.8	48	1500	0.25	0.5	38.8	36
2EZ56D5L	56	9.0	55	2000	0.25	0.5	42.6	32
2EZ62D5L	62	8.1	60	2000	0.25	0.5	47.1	29
2EZ68D5L	68	7.4	75	2000	0.25	0.5	51.7	27
2EZ75D5L	75	6.7	90	2000	0.25	0.5	56.0	24
2EZ82D5L	82	6.1	100	3000	0.25	0.5	62.2	22
2EZ91D5L	91	5.5	125	3000	0.25	0.5	69.2	20
2EZ100D5L	100	5.0	175	3000	0.25	0.5	76.0	18
2EZ110D5L	110	4.5	250	4000	0.25	0.5	83.6	17
2EZ120D5L	120	4.2	325	4500	0.25	0.5	91.2	15
2EZ130D5L	130	3.8	400	5000	0.25	0.5	98.8	14
2EZ140D5L	140	3.6	500	5500	0.25	0.5	106.4	13
2EZ150D5L	150	3.3	575	6000	0.25	0.5	114.0	12
2EZ160D5L	160	3.1	650	6500	0.25	0.5	121.6	11
2EZ170D5L	170	2.9	675	7000	0.25	0.5	130.4	11
2EZ180D5L	180	2.8	725	7000	0.25	0.5	136.8	10
2EZ190D5L	190	2.6	825	8000	0.25	0.5	144.8	10
2EZ200D5L	200	2.5	900	8000	0.25	0.5	152.0	9.0

Note :

- (1) Suffix " 5 " indicates $\pm 5.0\%$ tolerance, suffix " 10 " indicates $\pm 10.0\%$ tolerance.
- (2) " EZ " will be omitted in marking on the diode
- (3) " L " DO-15