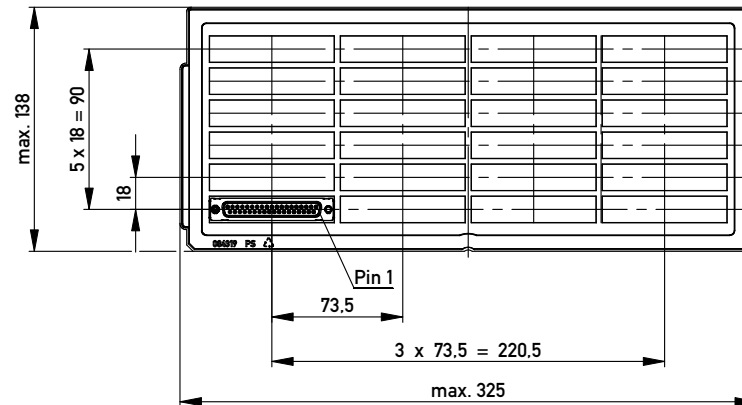
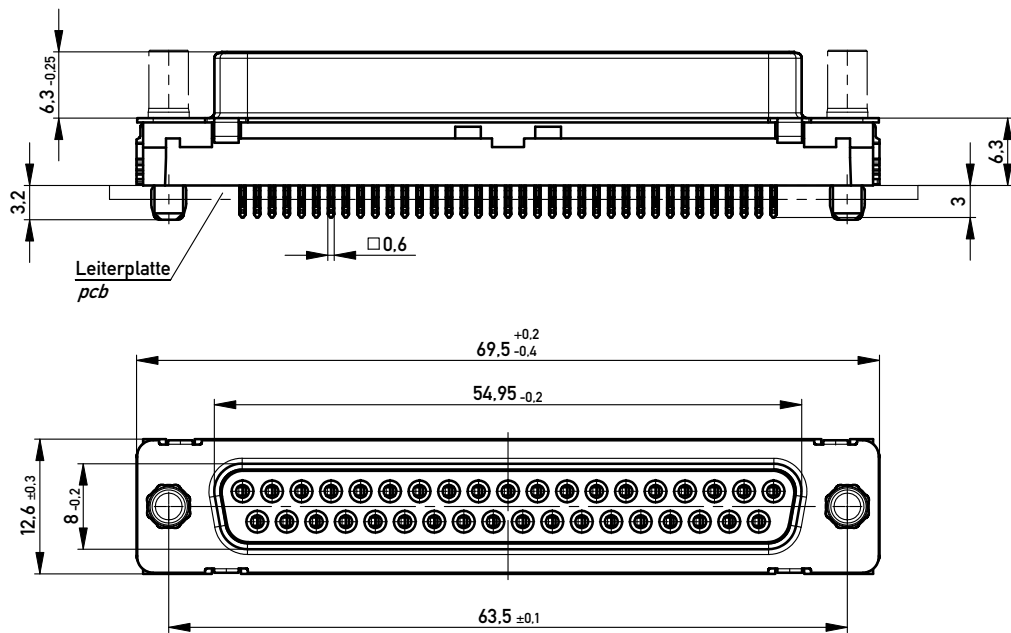
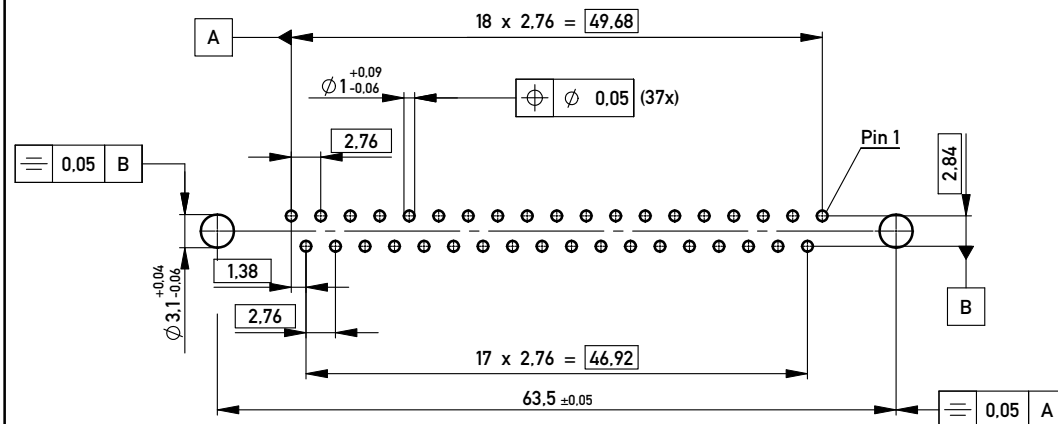


Verpackt in Tray
 Verpackungseinheit 24 St.
 tray packaging
 packaging unit 24 pcs



Sonstige Angaben siehe Zeichnung 204628 / Additional indications according to drawing 204628

Layoutvorschlag:
 recommended layout:



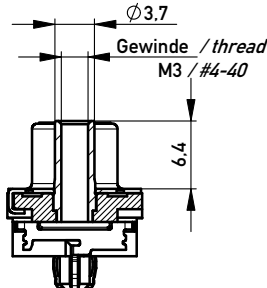
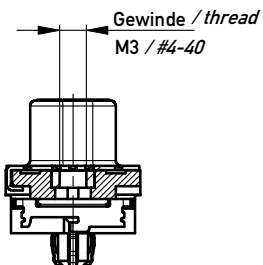
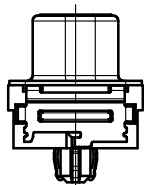
Lochaufbau siehe ERNI-Spezifikation 164062 / hole design according to ERNI-specification 164062

Fehlende Masse und Angaben siehe DIN 41652 / Missing information and dimensions according to DIN 41652
 Sonstige Angaben siehe Fertigungsunterlagen / Additional indications according to the production documentation

ohne / without

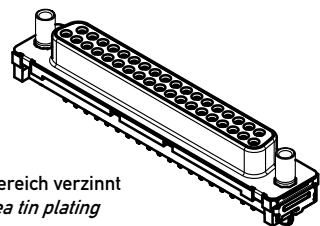
Mutter / nut
 max. Einschraubtiefe 3.7 mm
 thread depth max. 3.7 mm

Bolzen / bolt
 max. Einschraubtiefe 5.5 mm
 thread depth max. 5.5 mm



Beschriftung nach Bedruckungsvorschrift 174538
 Part marking according to specification 174538

M 1:1



Anschlussbereich verzinkt
 terminal area tin plating

Anforderungsstufe: 2
 class: 2

194390	X			
194391			#4-40	
194392			M3	
194393		#4-40		
194394		M3		
Ident.-Nr. part-no.	ohne without	Mutter thread	Bolzen bolt	Bemerkung remark

Copyright by ERNI GmbH
 Proprietary notice pursuant to ISO 16016 to be observed.

Information:	Tolerances	Scale	2:1
All rights reserved. Only for Information. To ensure that this is the latest version of this drawing, please contact one of the ERNI companies before using.	All Dimensions in mm	Designation	
		TMC-S 37-EE-3.0-6.3-BA8 TMC-S 37-EE-3.0-6.3-type 8	
Subject to modification without prior notice. Drawing will not be updated.		www.ERNI.com	
C	25.02.2010	144919	
Index	Date	Class	TMCS