

6 5 4 3 2 1

APPROVED: \_\_\_\_\_  
 DATE: \_\_\_\_\_ TITLE: \_\_\_\_\_

Rev	AWO #	Description	Date	Appr
-		RELEASED	3/30/16	
A		UPDATED SPEC.	6/20/16	HR/CK

D  
C  
B  
A

D  
C  
B  
A

4.30mm Length

Positions: 01 thru 40

ADAM P/N	Initial Height
PH1-3D-XX-MVF-4355	5.5mm
PH1-3D-XX-MVF-4360	6.0mm

5.30mm Length

Positions: 01 thru 40

ADAM P/N	Initial Height
PH1-3D-XX-MVF-5365	6.5mm
PH1-3D-XX-MVF-5370	7.0mm
PH1-3D-XX-MVF-5375	7.5mm
PH1-3D-XX-MVF-5380	8.0mm

7.30mm Length

Positions: 01 thru 40

ADAM P/N	Initial Height
PH1-3D-XX-MVF-7390	9.0mm
PH1-3D-XX-MVF-73A0	10.0mm
PH1-3D-XX-MVF-73B0	11.0mm

SPECIFICATIONS:

Material:  
 Insulator: Black plastics, Color: Black, rated UL 94V-0  
 Plunger: Brass, Gold plated  
 Barrel: Brass, Gold plated  
 Spring: SUS Surface treatment  
 Electrical:  
 Voltage rating: 12 VDC max  
 Current rating: 1 A max  
 Contact resistance: 20 mohms max  
 Mechanical:  
 Spring force: 90g±20g @ 1.0mm working stroke  
 Full stroke: 1.40mm  
 Life test: 1,000,000 Cycles  
 Temperature Rating:  
 Operating temperature: -40°C to +80°C  
 Environmental:  
 Lead free, RoHS compliant.

UNLESS OTHERWISE SPECIFIED ALL DIMENSIONS ARE MILLIMETERS TOLERANCES: EXCEPT AS NOTED HOLES		<b>ADAM TECH</b> 909 Rahway Avenue, Union, NJ 07083 Phone: 908-687-5000 Fax: 908-687-5710	
.X ± .25	∅.XX ± .013		
.XX ± .15		TITLE CUSTOM LENGTH TUBE SINGLE ROW STRIPS 4.00MM INSULATOR HEIGHT, SMT LOADED	
.XXX ± .05		REV. A	
APPROVALS		SIZE X	PART NO. PH1-3D-XX-MVF-XXXX
DRAWN	HR	REF:	S00170C
CHECKED	CK	SCALE:	NTS
APPROVED		SHEET	1 OF 2
	DATE		
	3/30/16		
	3/30/16		

6 5 4 3 2 1

6

5

4

3

2

1

APPROVED: \_\_\_\_\_

DATE: \_\_\_\_\_ TITLE: \_\_\_\_\_

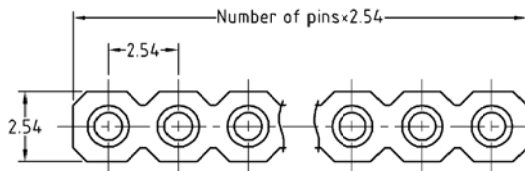
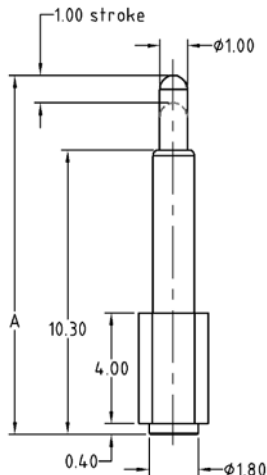
Rev	AWO #	Description	Date	Appr
-----	-------	-------------	------	------

SEE SHT 1 OF 2 FOR REVISION

D

D

10.30mm Length



Positions: 01 thru 40

ADAM P/N	Initial Height
PH1-3D-XX-MVF-A3C0	12.0mm
PH1-3D-XX-MVF-A3D0	13.0mm
PH1-3D-XX-MVF-A3E0	14.0mm

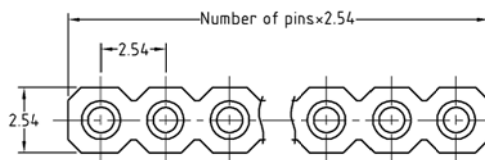
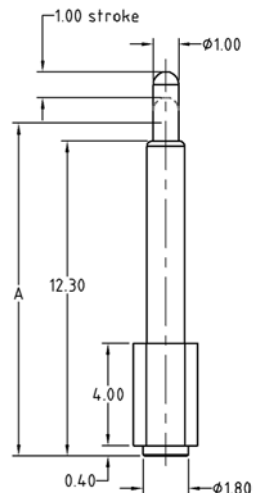
C

C

B

B

12.30mm Length



Positions: 01 thru 40

ADAM P/N	Initial Height
PH1-3D-XX-MVF-C3F0	15.0mm

A

A

UNLESS OTHERWISE SPECIFIED  
ALL DIMENSIONS ARE MILLIMETERS  
TOLERANCES: EXCEPT AS NOTED  
HOLES  
MM

.X	± .25		
.XX	± .15	∅.XX	± .013
.XXX	± .05		

# ADAM TECH

909 Rahway Avenue, Union, NJ 07083  
Phone: 908-687-5000 Fax: 908-687-5710

TITLE  
**CUSTOM LENGTH TUBE SINGLE ROW STRIPS  
4.00MM INSULATOR HEIGHT, SMT LOADED**

APPROVALS		DATE
DRAWN	HR	3/30/16
CHECKED	CK	3/30/16
APPROVED		

SIZE <b>X</b>	PART NO. <b>PH1-3D-XX-MVF-XXXX</b>	REV. <b>A</b>
REF: S00170C	SCALE: NTS	SHEET 2 OF 2

6

5

4

3

2

1