

30-LCVE Series



FEATURES:

- AC Input 90~305 Vac Nominal
- AC Inrush current: 50 A @ 230 Vac Cold start
- Power Factor: > 0.95 @ 115 Vac / > 0.9 @ 230 Vac
- Protection: SCP / OVP / OTP / OCP
- High Operating Ambient Temp.: -20 °C ~ +60 °C
- Surge Protection: L-N 1 kV, L/N-FG 2 kV
- Safety: Meets UL
- EMI: Meets FCC / Meets CE
- Comply with Indoor/Outdoor Waterproof (IP 67)
- Warranty: 5 years (refer to LinkCom warranty policy)
- RoHS Compliant

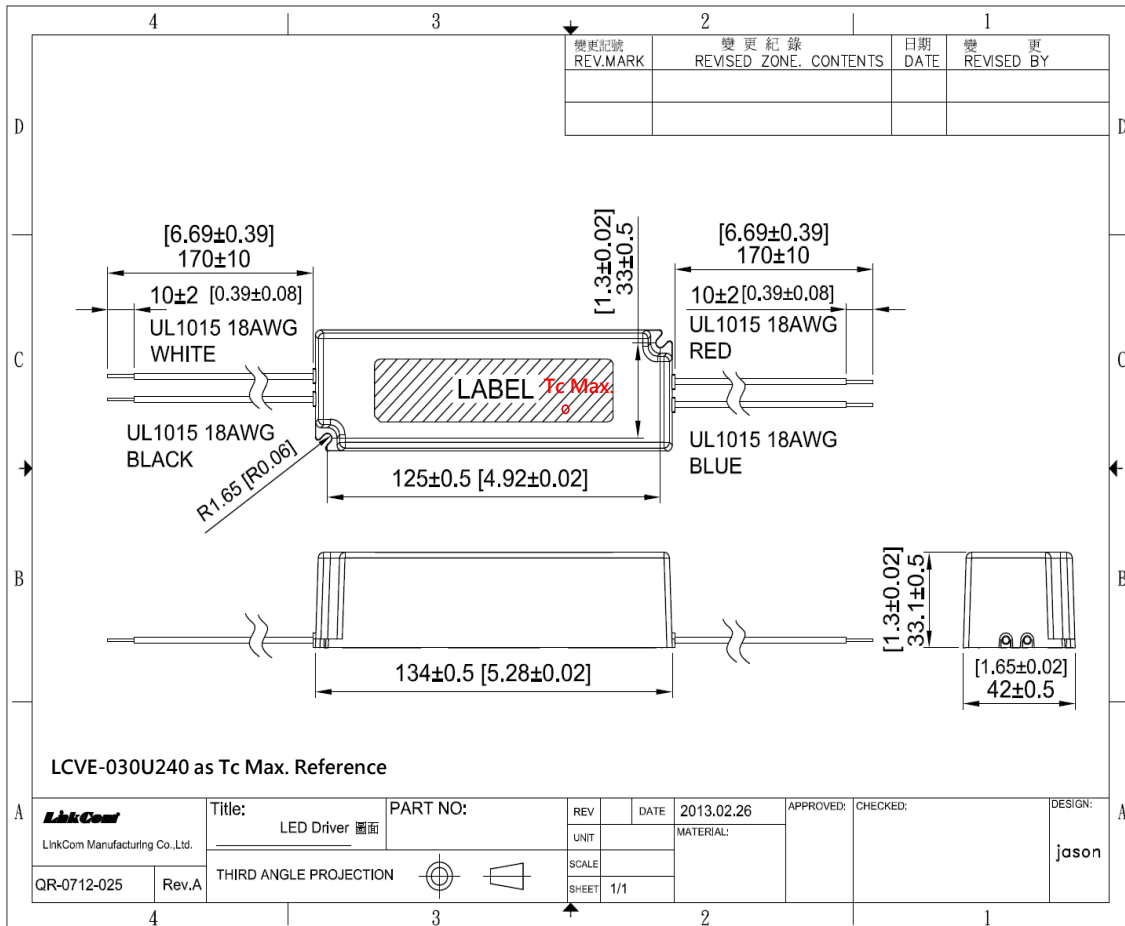
PRODUCT SPECIFICATION						
MODEL	DC OUTPUT POWER(W)	DC OUTPUT VOLTAGE(V)	OUTPUT CURRENT(A)	OUTPUT VOLTAGE TOLERANCE	EFFICIENCY	O/P NOISE(P-P, V)
LCVE-030U125-00	30	12	2.5	±5%	81%	0.3
LCVE-030U240-00	30	24	1.25	±5%	81%	0.3

ELECTRICAL SPECIFICATION	
INPUT VOLTAGE RANGE	90-305 Vac, 127-431 Vdc, Normal: 100-277 Vac
INPUT FREQUENCY	Range: 47-63 Hz, Normal: 50-60 Hz
ACTIVE POWER FACTOR	> 0.95 @ 115 Vac / > 0.9 @ 230 Vac at Full Load and Rated Output Voltage
THD	NA
TURN ON DELAY TIME	2000 ms, 500 ms at Full Load 115 Vac / 230 Vac
AC CURRENT	0.6 A / 115 Vac
INRUSH CURRENT (typ)	Cold Start 50 A @ 230 Vac
LEAKAGE CURRENT	< 0.7 mA / 240 Vac
SHORT CIRCUIT PROTECTION	SCP will restart automatically after the fault condition is removed
OVER VOLTAGE PROTECTION	Shut down and latch off o/p voltage, re-power on to recover
OVER TEMP. PROTECTION	
OVER CURRENT PROTECTION	OCP will restart automatically after the fault condition is removed
OPERATING TEMP.	-20 °C ~ +60 °C
STORAGE TEMP.	-40 °C ~ +80 °C
RELATIVE HUMIDITY	10% to +90%, non-cond.
SAFETY	Meets UL 60950-1
EMI	Meets FCC Part 15 / Meets EN 55015
WITHSTAND VOLTAGE	I/P-O/P: 4.242 kVdc I/P-CASE: 4 kVdc
ISOLATION RESISTANCE	I/P-O/P: 100M Ω / 500 Vdc / 25°C / 70% RH
DIMENSION (L*W*H)	134 * 42 * 33.1 mm 【5.28 * 1.65 * 1.3 inch】
(1) All parameters specified at 230 Vac input unless otherwise noted. (2) All specifications Typical at 25°C, unless otherwise noted, at normal line and load. (3) Ripple and Noise measured directly at pins/terminals at nom. load, 0.1uF bypass and 47uF electrolytic, pk-pk at 20MHz bandwidth. (4) Specified for free-air convection cooling. (5) Minimum load is NOT required for proper operation . (6) 100% Production Tested.	

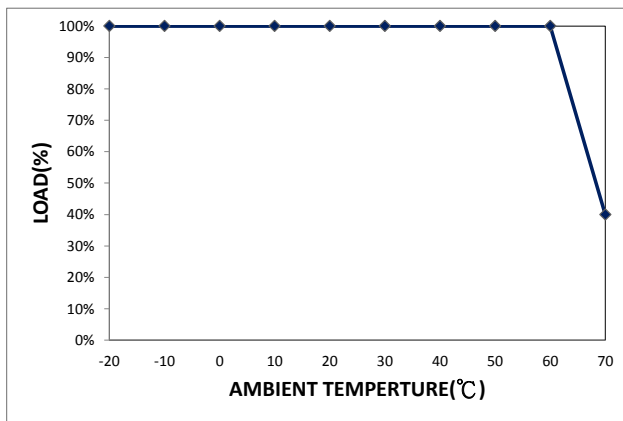
* REFERENCE: www.linkcom.com.tw

* Please contact sales@linkcom.com.tw, sales@linkcomusa.com for more information

DIMENSIONS

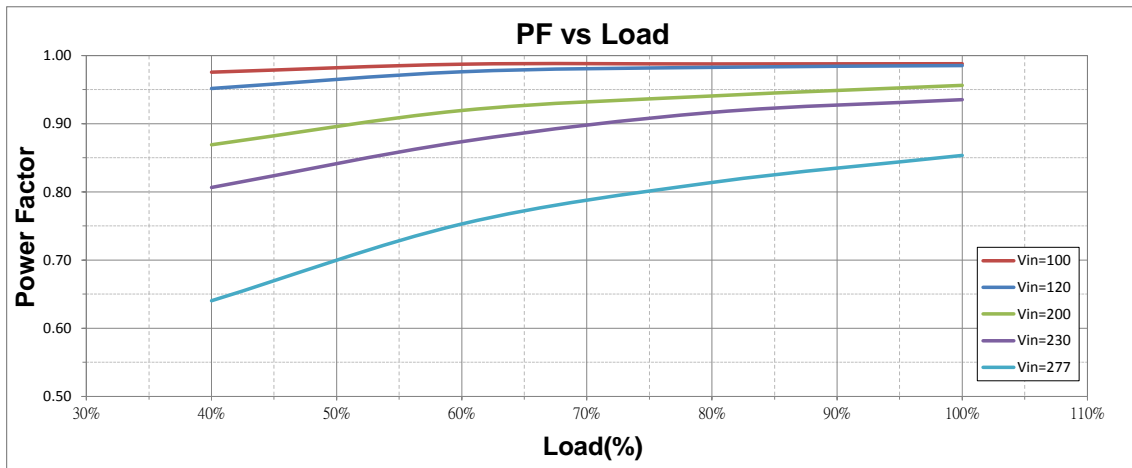


DERATING CURVE

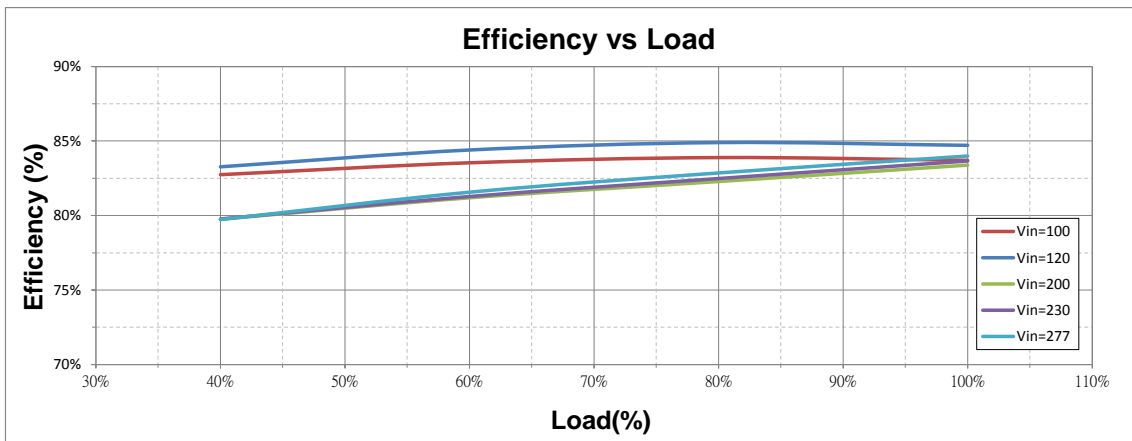


* REFERENCE: www.linkcom.com.tw

Power Factor vs. Load (LCVE-030U125-00)



EFFICIENCY vs. LOAD (LCVE-030U125-00)



Output Voltage vs. Load (LCVE-030U125-00)

