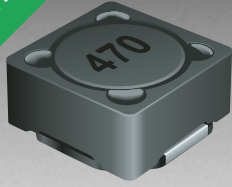


RoHS COMPLIANT



**BOURNS®**

### Features

- Available in E12 values
- Inductance as low as 1.2  $\mu\text{H}$
- Current rating to 9.2 amps
- Lead free
- RoHS compliant\*

### Applications

- Input/output of DC/DC converters
- Power supplies for:
  - Portable communication equipment
  - Camcorders
  - LCD TVs
  - Car radios

## SRR1260 Series - Shielded SMD Power Inductors

### Electrical Specifications

Bourns Part No.	Inductance 100 kHz		Q Typ.	Test Frequency (MHz)	SRF Min. (MHz)	RDC Max. ( $\Omega$ )	I rms Max. (A)	I sat Typ. (A)
	( $\mu\text{H}$ )	Tol. %						
SRR1260-1R2Y	1.20	$\pm 30$	18	7.96	91.1	0.0080	9.20	9.80
SRR1260-2R4Y	2.40	$\pm 30$	18	7.96	63.8	0.0115	7.80	8.00
SRR1260-3R5Y	3.50	$\pm 30$	22	7.96	37.6	0.0130	7.50	7.60
SRR1260-4R7Y	4.70	$\pm 30$	19	7.96	36.7	0.0155	6.80	7.00
SRR1260-6R1Y	6.10	$\pm 30$	21	7.96	29.8	0.0170	6.60	6.80
SRR1260-7R6Y	7.60	$\pm 30$	16	7.96	27.9	0.0190	6.00	6.20
SRR1260-100M	10.0	$\pm 20$	32	2.52	21.0	0.0200	5.50	5.50
SRR1260-120M	12.0	$\pm 20$	27	2.52	19.4	0.0230	5.20	5.00
SRR1260-150M	15.0	$\pm 20$	25	2.52	17.6	0.0270	5.00	4.60
SRR1260-180M	18.0	$\pm 20$	28	2.52	15.5	0.0360	4.20	3.90
SRR1260-220M	22.0	$\pm 20$	29	2.52	13.4	0.0430	4.00	3.70
SRR1260-270M	27.0	$\pm 20$	26	2.52	12.7	0.0450	3.60	3.30
SRR1260-330M	33.0	$\pm 20$	27	2.52	9.97	0.0600	3.00	2.80
SRR1260-390M	39.0	$\pm 20$	22	2.52	10.4	0.0700	2.80	2.70
SRR1260-470M	47.0	$\pm 20$	22	2.52	7.63	0.0860	2.60	2.50
SRR1260-560M	56.0	$\pm 20$	24	2.52	7.92	0.1000	2.30	2.20
SRR1260-680M	68.0	$\pm 20$	22	2.52	7.43	0.1100	2.10	2.10
SRR1260-820M	82.0	$\pm 20$	25	2.52	6.85	0.1450	1.95	1.90
SRR1260-101M	100.0	$\pm 20$	26	0.796	6.07	0.1800	1.70	1.70

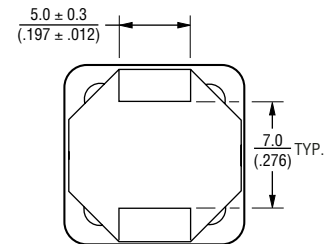
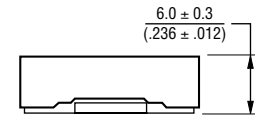
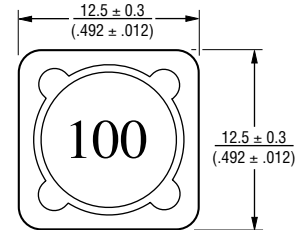
### General Specifications

Test Voltage.....0.1 V  
 Reflow Soldering ...230 °C, 50 sec. max.  
 Operating Temperature -40 °C to +125 °C  
 (Temperature rise included)  
 Storage Temperature...-40 °C to +125 °C  
 Resistance to Soldering Heat  
 .....260 °C for 10 sec.

### Materials

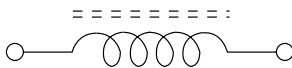
Core .....Ferrite DR and RI  
 Wire .....Enameled copper wire 130  
 Terminal.....Cu/Ni/Sn  
 Rated Current  
 .....Ind. drop 25 % typ. at Isat  
 Temperature Rise .....40 °C max.  
 at rated I rms  
 Packaging .....600 pcs. per reel

### Product Dimensions

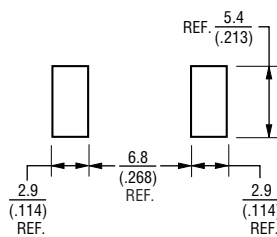


DIMENSIONS:  $\frac{\text{MM}}{\text{(INCHES)}}$

### Electrical Schematic



### Recommended Layout

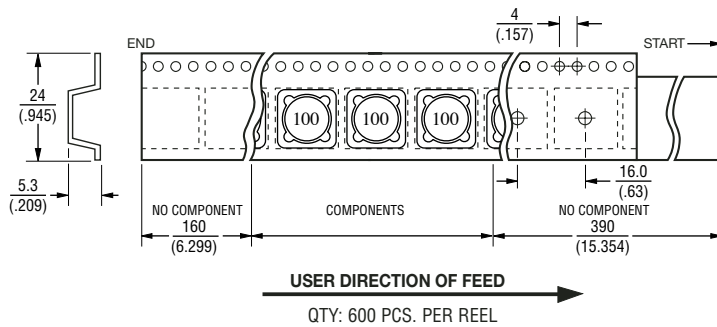
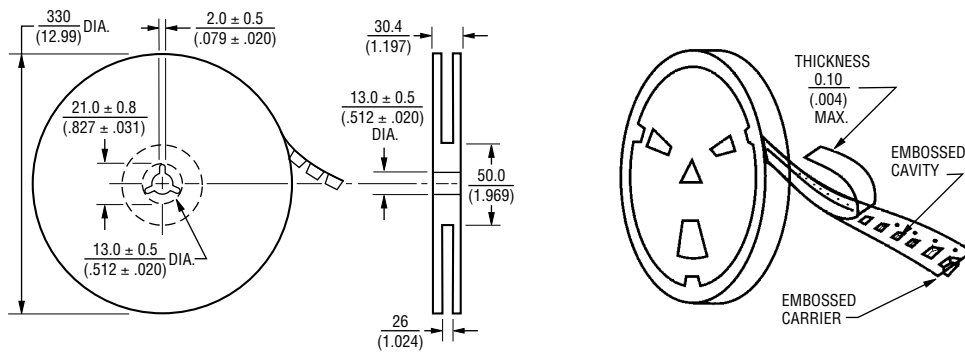


\*RoHS Directive 2002/95/EC Jan 27 2003 including Annex  
 Specifications are subject to change without notice.  
 Customers should verify actual device performance in their specific applications.

# SRR1260 Series - Shielded SMD Power Inductors

**BOURNS®**

## Packaging Specifications



DIMENSIONS:  $\frac{\text{MM}}{\text{(INCHES)}}$

REV. 05/05

Specifications are subject to change without notice.  
Customers should verify actual device performance in their specific applications.