

Bussmann series GH Industrial HRC Fuse Links



Product description

Eaton's Bussmann series range of British Standard fuse links size D1 has been specifically designed for the protection of street lighting applications.

Standard features

- Good peak let-through current limitation
- 1:1:6 Selective coordination ratio between "minor" and "major" fuse
- gG characteristics for cable protection and general purpose applications
- Power loss values well within the limits of IEC 60269

Catalogue symbol:

- GH(amps)

Technical data:

- Rated voltage: 550 V a.c.
- Rated current: 710 to 1250 A
- Breaking capacity: 80 kA
- Class of operation: gG
- Size: D1

Standards/approvals:

- BS88
- IEC 60269
- Suitable for use in RoHS compliant applications

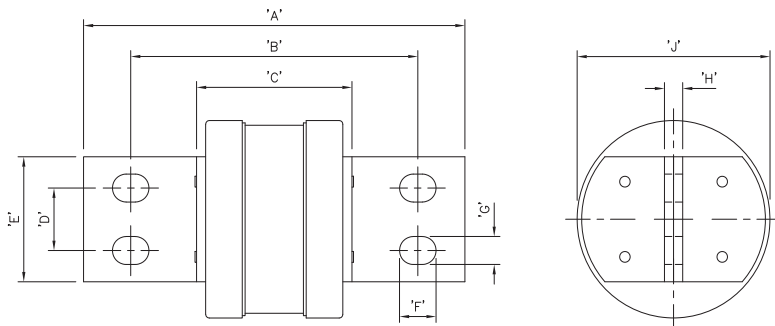
Packaging:

- MOQ 1

Table 1. Technical data

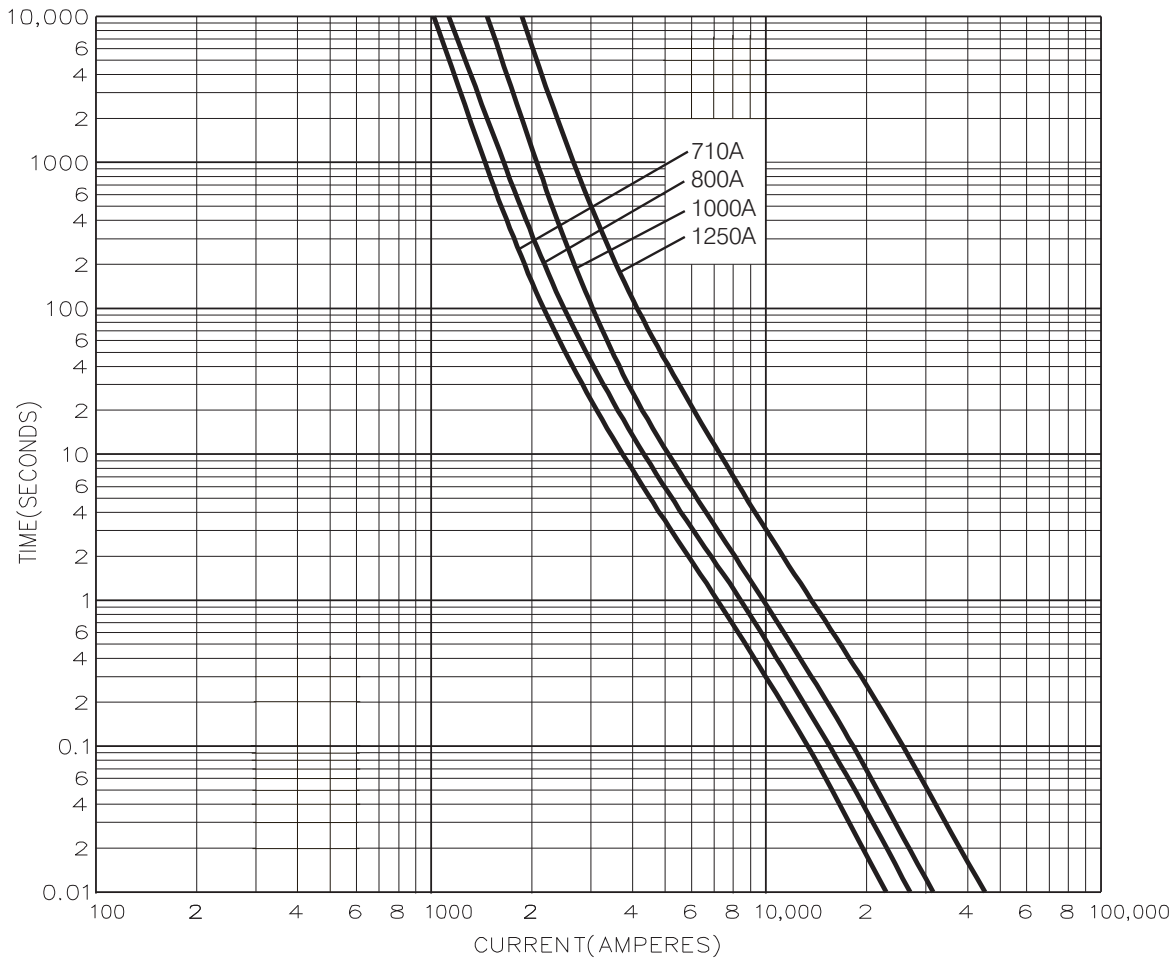
Part number	Rated voltage	Rated current (Amps)	Energy integrals I ² t (A ² S)		Watts loss	Product class	Weight (grams)
			Pre-arcing	Total at 415V	W		
GH710	550 V a.c.	710	3500	8100	53	gG	2630
GH800	550 V a.c.	800	5000	11500	64	gG	2630
GH1000	550 V a.c.	1000	6800	16000	69	gG	2630
GH1250	550 V a.c.	1250	14000	31000	85	gG	2630

Dimensions - mm



Catalogue numbers	A	B	C	D	E	F	G	H	J
GH710-800	198	149	81	32	63.5	19	14	9.5	83
GH1000-1250	198	149	81	32	63.5	19	14	9.5	100

Time current curve



Changes to the products, to the information contained in this document, and to prices are reserved; so are errors and omissions. Only order confirmations and technical documentation by Eaton is binding. Photos and pictures also do not warrant a specific layout or functionality. Their use in whatever form is subject to prior approval by Eaton. The same applies to Trademarks (especially Eaton, Moeller, and Cutler-Hammer). The Terms and Conditions of Eaton apply, as referenced on Eaton Internet pages and Eaton order confirmations.

Eaton
EMEA Headquarters
Route de la Longeraie 7
1110 Morges, Switzerland
Eaton.eu

© 2015 Eaton
All Rights Reserved
Publication No. 4108
July 2015