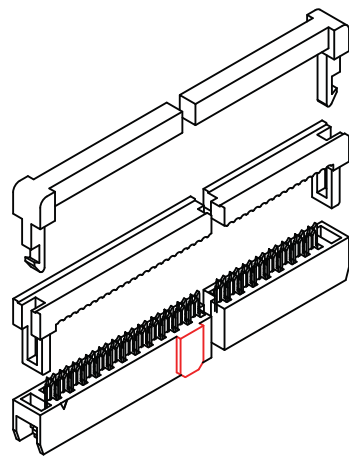
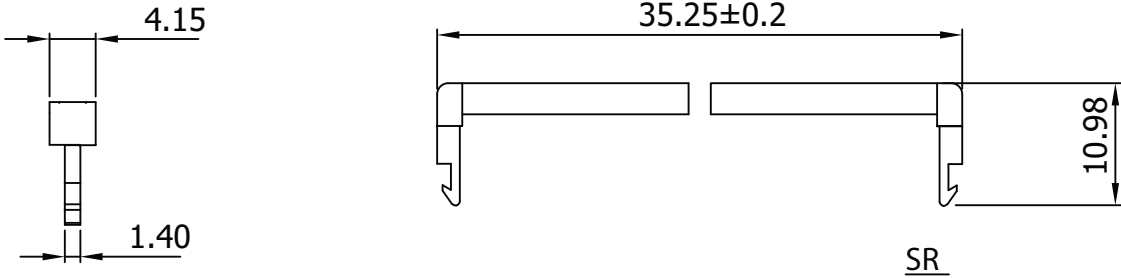


1 2 3 4 5 6 7

A

A



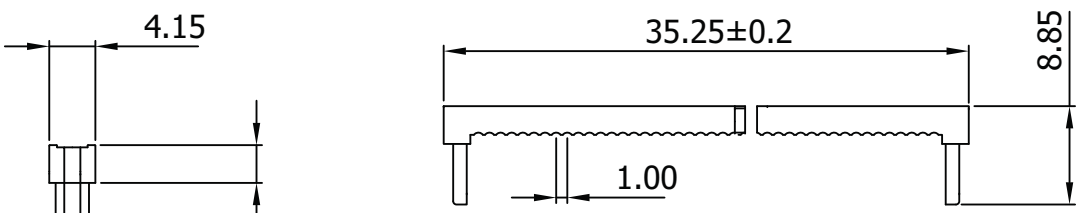
B

B

I.D.C SOCKET DUAL-ROW

C

C

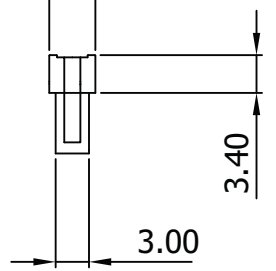


Material:

- Insulator: P.B.T. 30% Glass Fiber, UL 94V-0
- Contact Material: Phosphor Bronze, Gold flash over Nickel

D

D

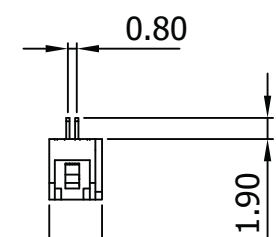


Electrical:

- Current Rating: 1Amp DC
- Insulation Resistance: 1,000MΩ Min.
- Dielectric Withstanding: 500V AC
- Operating Temperature: -55°C ~ +105°C

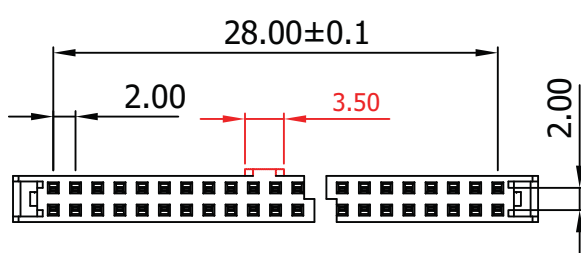
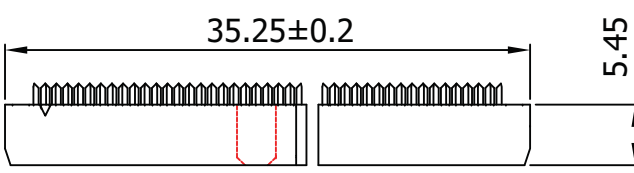
E

E



F

F



Unit: MM±0.30MM

G

G

Scale	1:1						Name
TOLERANCE					Drawn	10.19.11	Chappell
X.X	±0.40				Approved		
X.XX	±0.25						
X.XXX	±0.15						
Angle	±3°						
		Modification		Date	Name		

Item No.
AWP2-30-7241-T-R

Title IDC-Socket - 2.00MM Pitch,
Gold Flash, Central Lug w/Strain Relief,
30 Contacts



Drawing No.

rev00

Replace Sheet

H

H

1 2 3 4 5 6 7