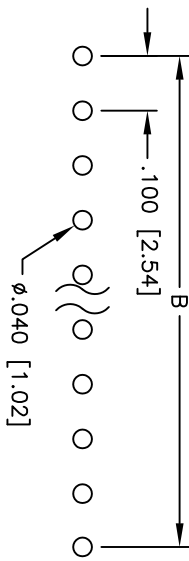
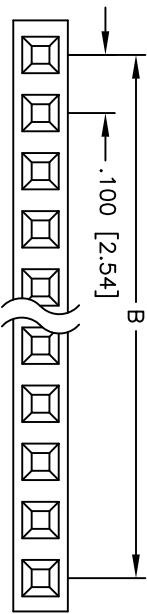
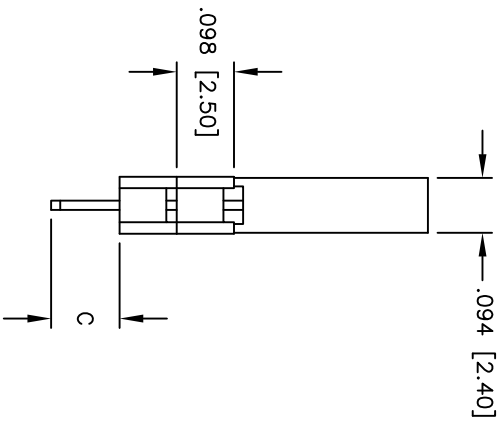
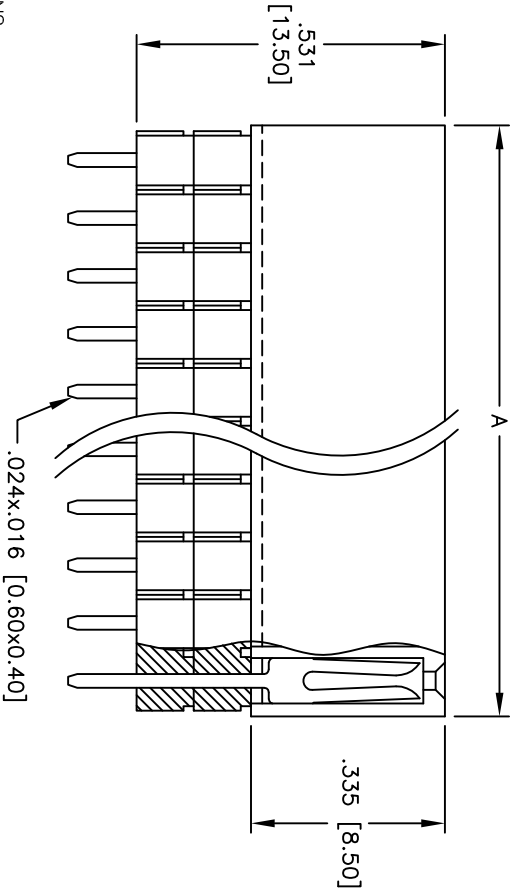


Rev	AWO #	Description	Date	Appr
-		RELEASED	6/2/05	

APPROVED: \_\_\_\_\_  
 DATE: \_\_\_\_\_ TITLE: \_\_\_\_\_



RECOMMENDED  
PCB LAYOUT



**SPECIFICATIONS:**

Material: Insulator: PBT, glass reinforced, rated UL 94V-0  
 Insulator color: Black  
 Contacts: Brass  
 Plating: Gold flash over Nickel underplate on contact area, Tin over Copper underplate on tails.

Electrical:  
 Operating voltage: 250 VAC max.  
 Current rating: 3 Amps max.  
 Contact resistance: 20 mohms max. initial  
 Insulation resistance: 5,000 Mohms min.  
 Dielectric withstanding voltage: 1,000 VAC for 1 minute  
 Temperature Rating:  
 Operating temperature: -40°C to +105°C

Environmental:  
 Lead free, RoHS compliant  
 Recommended soldering temp: 235°C for 5 seconds



PIN	DIMENSION
LENGTH	C
RSE1...-1	.091 [2.30]
RSE1...-2	.118 [3.00]
RSE1...-3	.315 [8.00]
RSE1...-4	.217 [5.50]
RSE1...-5	.380 [9.65]

Positions: 01 thru 40  
 A = .100 [2.54] x No. of Positions + .020 [0.50]  
 B = .100 [2.54] x No. of Spaces

**ADAM TECH**

909 Rahway Avenue, Union, NJ 07083  
 Phone: 908-687-5000 Fax: 908-687-5710

TITLE: .100 [2.54] SINGLE ROW RECEPTACLE STRIP  
 ELEVATED SOCKET, 2 INSULATORS

UNLESS OTHERWISE SPECIFIED ALL DIMENSIONS ARE INCHES [MM]	
TOLERANCES: EXCEPT AS NOTED	
INCHES	HOLDS
.X ± .10	ØXX ± .10
.XX ± .020	ØXXX ± .015
.XXX ± .015	ØXXX ± .010
APPROVALS	DATE
DRAWN	SS
CHECKED	6/2/05
APPROVED	

SIZE	PART NO.	REV.
X	RSE1-2-XX-SG-X	
REF:	SCALE: NTS	SHEET 1 OF 1