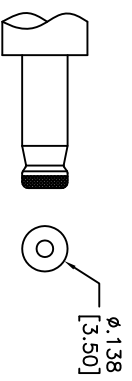
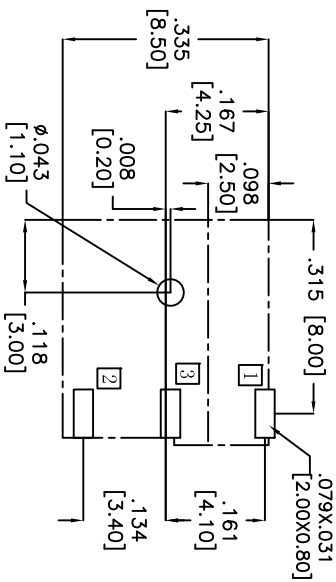
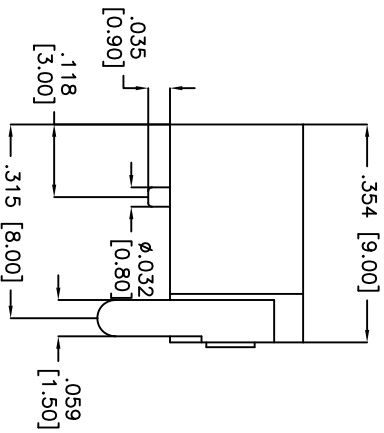
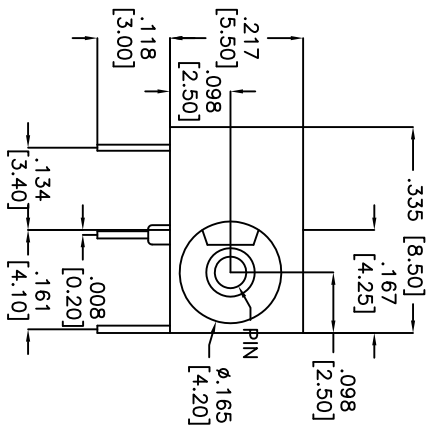


Rev	AWO #	Description	Date	Appr
-		RELEASED	12/10/04	
B		REDRAWN	12/23/08	
C		REVISED DIM.	11/26/10	

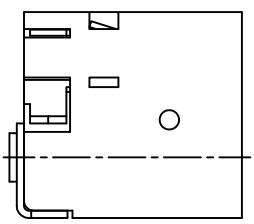
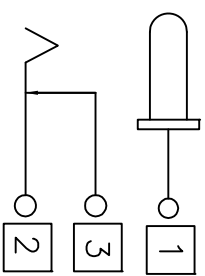
APPROVED: _____
 DATE: _____ TITLE: _____



DC MATE PLUG

Recommended PCB Layout
 (Copper-sided VIEW)

PART NO.	X
ADC-011-3	Ø.039 [1.00]
ADC-011-4	Ø.051 [1.30]



SPECIFICATIONS:

- Material: Insulator: PBT, Glass reinforced, rated UL 94V-0
- Insulator color: Black
- Center Pin: Brass, Nickel plated
- Contacts: Copper Alloy
- Plating: Silver over Nickel underplate
- Electrical: Operating voltage: 20 VDC max.
- Current rating: 2 Amp max.
- Contact resistance: 50 mohms max. initial
- Insulation resistance: 100 Mohms min.
- Dielectric withstanding voltage: 500 VAC for 1 minute
- Temperature Rating: Operating temperature: -25°C to +70°C
- Environmental: Lead free, RoHS compliant
- Recommended soldering temp: 235°C for 5 sec.



UNLESS OTHERWISE SPECIFIED
 ALL DIMENSIONS ARE INCHES [MM]
 TOLERANCES: EXCEPT AS NOTED
 INCHES Holes ±.10
 .X ±.10 Ø.X
 .XX ±.020 Ø.XX
 .XXX ±.015 Ø.XXX

ADAM TECH

909 Rahway Avenue, Union, NJ 07083
 Phone: 908-687-5000 Fax: 908-687-5710

DC POWER JACK, 1.00mm, 1.30mm CENTER PIN

DRAWN	SS	DATE	SIZE	PART NO.	REV.
CHECKED			X	ADC-011-X	C
APPROVED			REF: S0002C	SCALE: NTS	SHEET 1 OF 1