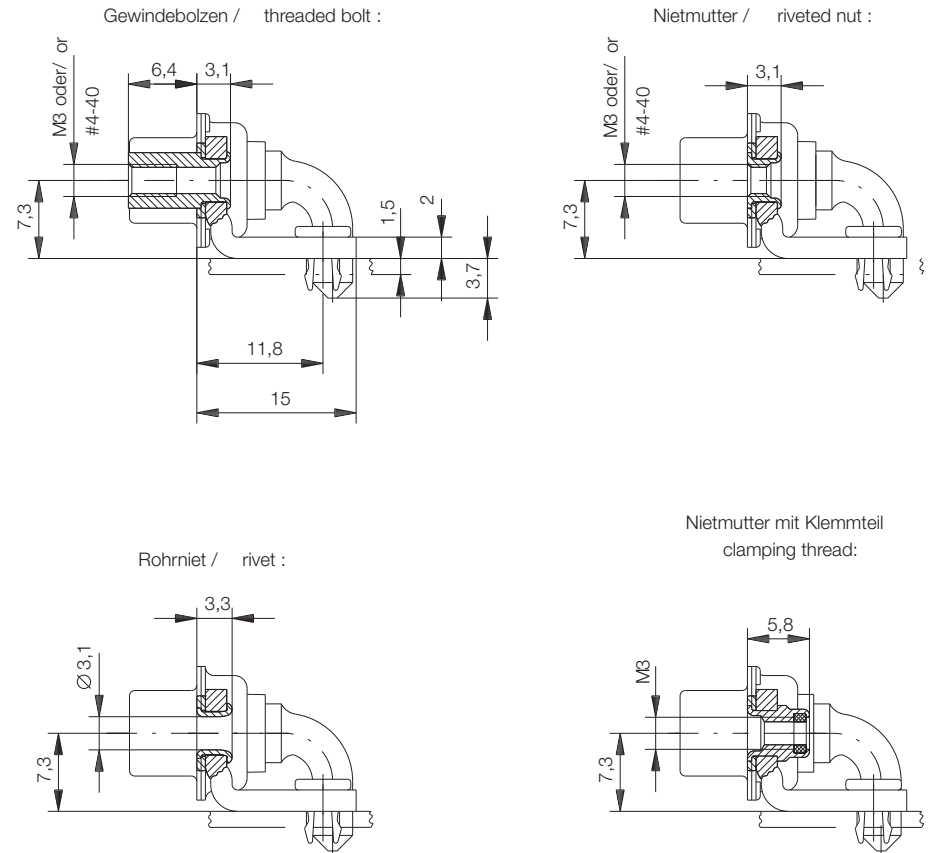


Schnitt A-A / cross section A-A



Ident-Nr. / Part No. :	Refer to table on page 2
Polzahl / No. of contacts :	Refer to table on page 2
Anschlußart / Terminal Type :	Angled soldering
Anschlußlänge / Terminal Length :	-
Bauart / Type :	3W3
Anforderungsstufe / Class :	207=0.8µm (30 µin) Au CONTACT, TIN/LEAD TERMINAL
Aufdruck / Logo :	ERNI
Zubehör / Accessory :	Refer to table on page 2
Sonderausführung / Special :	Refer to table on page 2

Leiterplattenlochbild 134100 / Board hole pattern 134100

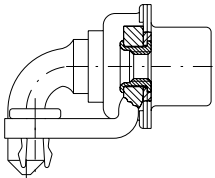
Information:	Tolerances	All Dimensions in mm	Scale	2:1
<small>Consider protection memo from DIN 54</small> All rights reserved. Only for information. To insure that this is the latest version of this drawing, please contact one of the ERNI companies before using.	Subject to modification without prior notice. Drawing will not be updated.	www.ERNI.com	Designation	
			TMC-S 3W3-LP07-3 TMC-S 3W3-LP07-3	
b	15.05.2001		054941	
Index	Date	M:00023002.SZN	TMCS	

## Ordering Information

### D-Sub Connector High Power Solder Right Angle Female

Number of Pins

3W3



Accessory Termination Side: Rivet nut M3

134468

Accessory Termination Side: Rivet nut #4-40

134469