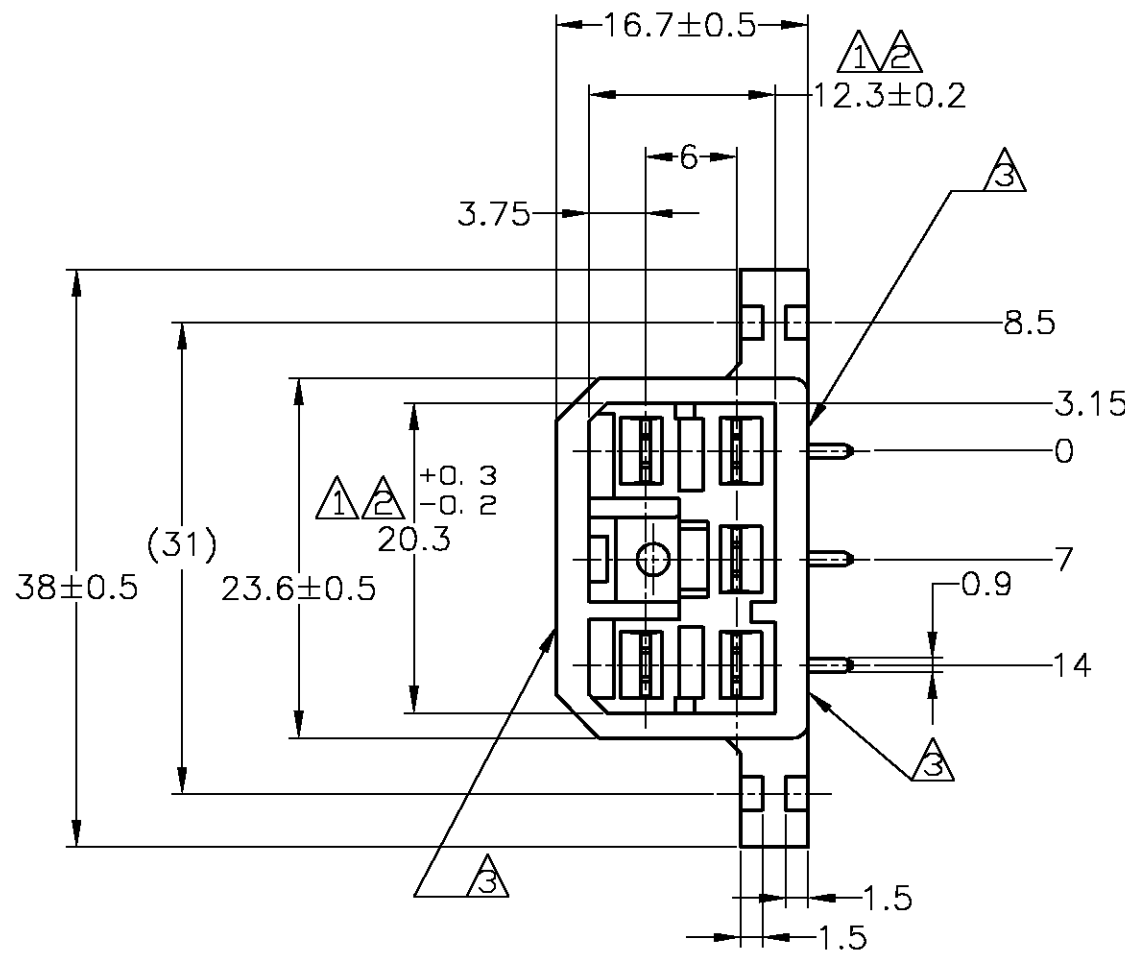
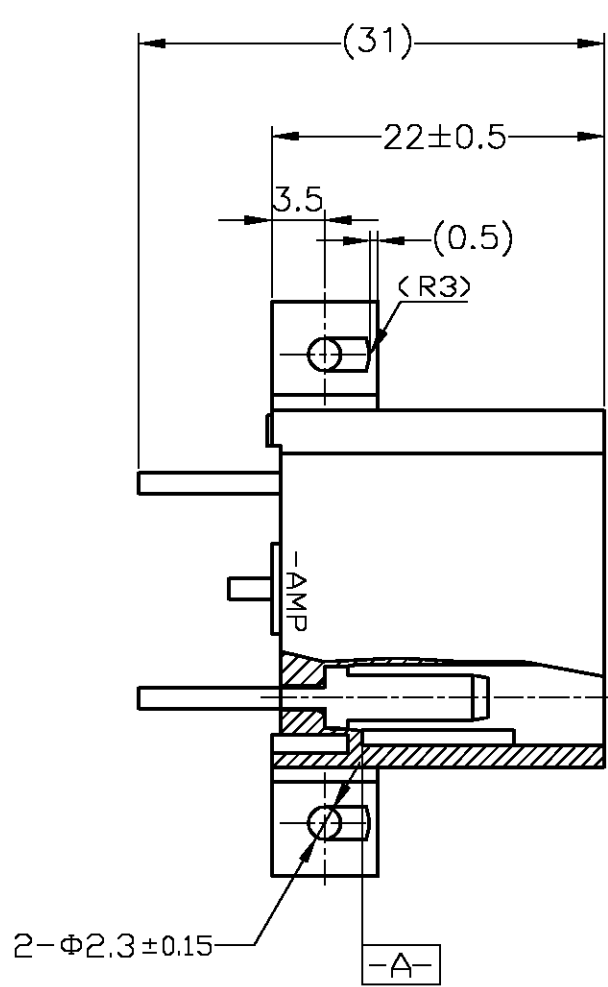


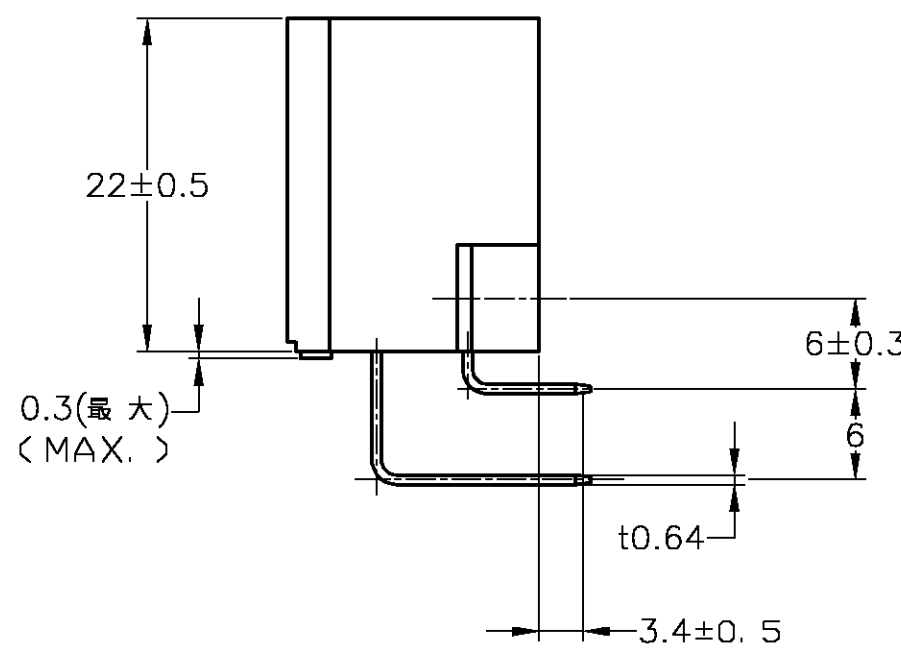
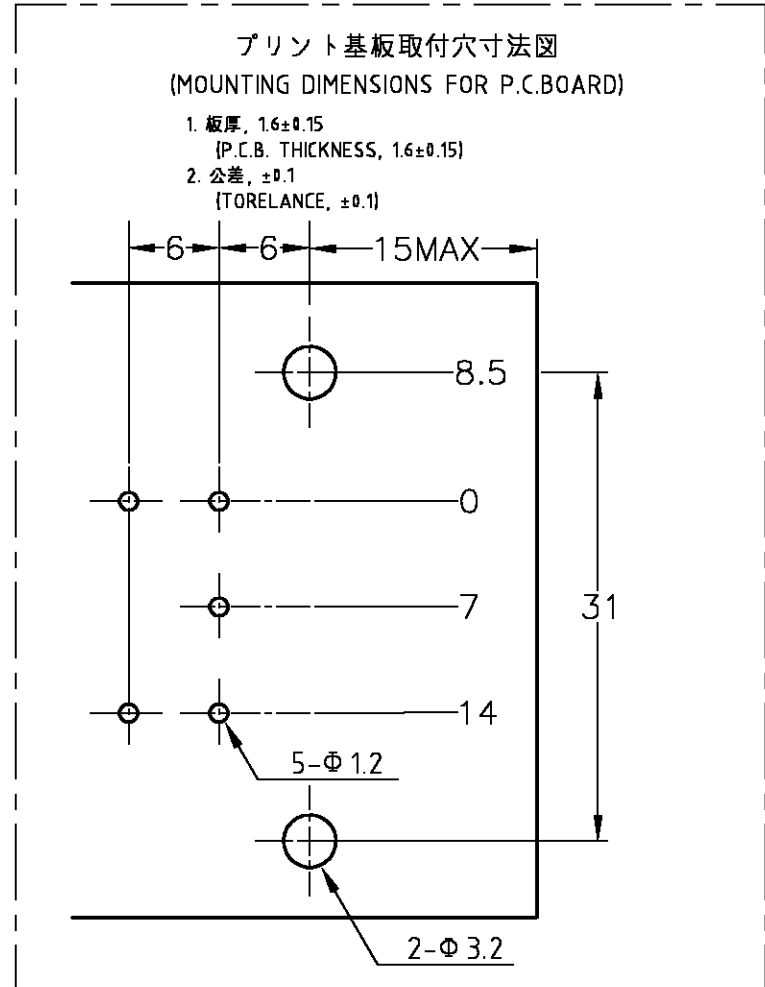
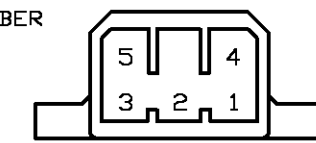
THIS DRAWING IS UNPUBLISHED. RELEASED FOR PUBLICATION
 © COPYRIGHT BY TYCO ELECTRONICS CORPORATION. ALL RIGHTS RESERVED.

| LOC | DIST | REVISIONS | | | | | | |
|-----|------|-----------|-----|-------------|---------------|---------|------|----|
| | | P | LTR | DESCRIPTION | DATE | DWN | APVD | |
| J | - | G4 | | OBSOLETE -5 | ECR-08-000600 | 09JAN08 | TS | KB |



- 注記:
- △ -A- 面より2mmの範囲で測定のこと。
 - △ 相手ハウジングと所定の機能を満たしてかん合できること。
 - △ フードの反りは0.2以内。
 - 4 推奨取り付けねじ: JIS B 1115 又は、1122 タッピンねじ
なべ1種又は2種、呼び径3長さ6mm以下
(締め付けトルク: 39.2N 以下)
 - 5 適用製品規格 No.108-5093
 - 6 相手ハウジングとのかん合力は、29.4N以下
但し、リセプタクルコンタクトは含まない。
 - △ タブなしタイプ(表参照)回路番号下図参照のこと。

- NOTES:
- △ TO BE MEASURED WITHIN 2mm FROM -A-
 - △ IN COUPLING WITH THE PLUG HOUSING MATING SATISFIES FUNCTION
 - △ WARPAGE 0.2 MAX.
 - 4 RECOMMENDED MOUNTING SCREW: 3mm DIA, 6mm LENGTH (MAX.)
PAN HEAD, CLASS 1 AND 2 TAPPING SCREW SPECIFIED IN JIS B1115, B1122 (TIGHTENING TORQUE: 39.2N MAX.)
 - 5 SPEC. No. 108-5093
 - 6 IN COUPLING WITH THE PLUG HOUSING MATING FORCE 29.4N MAX WITHOUT RECEPTACLE CONTACT
 - △ NON TAB CONTACT'S TYPE (SEE TABLE)
CIRCUIT NUMBER



| | | SELECTIVE-TIN (MATTE) | SELECTIVE GOLD (0.76μm MIN.) | NATURAL | 5172040-8 |
|----------------------------|---------------------------|-----------------------|------------------------------|------------|---------------------|
| | | SELECTIVE-TIN (MATTE) | SELECTIVE GOLD (0.38μm MIN.) | NATURAL | 1-5172040-5 |
| | 2 | PRE-TIN | | NATURAL | 2-172040-1 |
| OBSOLETE | | TIN-LEAD | SELECTIVE GOLD (0.38μm MIN.) | GREEN | 1-172040-8 |
| OBSOLETE | | TIN-LEAD | SELECTIVE GOLD (0.38μm MIN.) | NATURAL | 1-172040-5 |
| OBSOLETE | | TIN-LEAD | SELECTIVE GOLD (0.76μm MIN.) | YELLOW | 1-172040-4 |
| OBSOLETE | | TIN-LEAD | SELECTIVE GOLD (0.76μm MIN.) | GRAY | 1-172040-3 |
| OBSOLETE | | TIN-LEAD | SELECTIVE GOLD (0.76μm MIN.) | BLUE | 1-172040-2 |
| OBSOLETE | | TIN-LEAD | SELECTIVE GOLD (0.76μm MIN.) | GREEN | 1-172040-1 |
| OBSOLETE | | TIN-LEAD | SELECTIVE GOLD (0.76μm MIN.) | BROWN | 1-172040-0 |
| OBSOLETE | | TIN-LEAD | SELECTIVE GOLD (0.76μm MIN.) | BLACK | 172040-9 |
| | | TIN-LEAD | SELECTIVE GOLD (0.76μm MIN.) | NATURAL | 172040-8 |
| OBSOLETE | | PRE-TIN | | YELLOW | 172040-7 |
| OBSOLETE | | PRE-TIN | | BLUE | 172040-5 |
| | | PRE-TIN | | GREEN | 172040-4 |
| OBSOLETE | | PRE-TIN | | BROWN | 172040-3 |
| | | PRE-TIN | | BLACK | 172040-2 |
| | | PRE-TIN | | NATURAL | 172040-1 |
| △ NON TAB PLACES タブなし箇所 | SOLDERING SIDE 半田付け部 | CONTACT SIDE 接触部側 | | COLOR 色 | PART NUMBER 製品型番 |
| | CONTACT FINISH コンタクト仕上 | | | | |

TOLERANCE UNLESS OTHERWISE SPECIFIED: 一般公差

0 <= x <= 10 : ±0.2
 10 <= x <= 30 : ±0.25
 30 <= x <= 100 : ±0.3
 ANGLE : ±3°

THIS DRAWING IS A CONTROLLED DOCUMENT.

DWN: T.SHINOHARA 31AUG07
 CHK: K.BETSUI 31AUG07
 APVD: K.BETSUI 31AUG07

Tyco Electronics Corporation
 Kawasaki, Japan

NAME: 5P HORIZONTAL TYPE CAP HOUSING ASS'Y
 製品仕様: MULTI-INTERLOCK CONN. (WIRE TO P.C.B.)

PRODUCT SPEC: 108-5093
 APPLICATION SPEC: 取付適用規格

SIZE: A2 CAGE CODE: 00779 DRAWING NO: 172040
 WEIGHT: - RESTRICTED TO: -

CUSTOMER DRAWING SCALE: 2:1 SHEET: 1 of 1 REV: G4