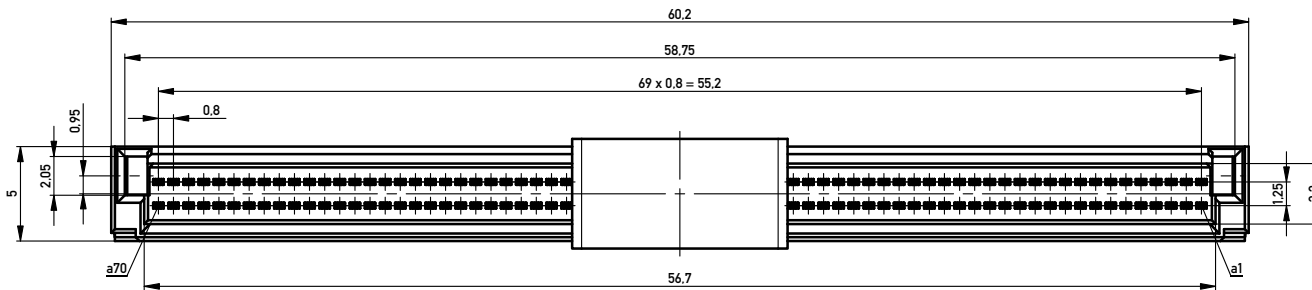
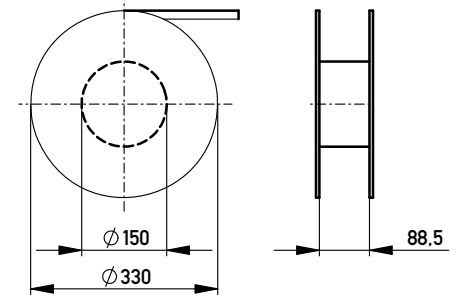
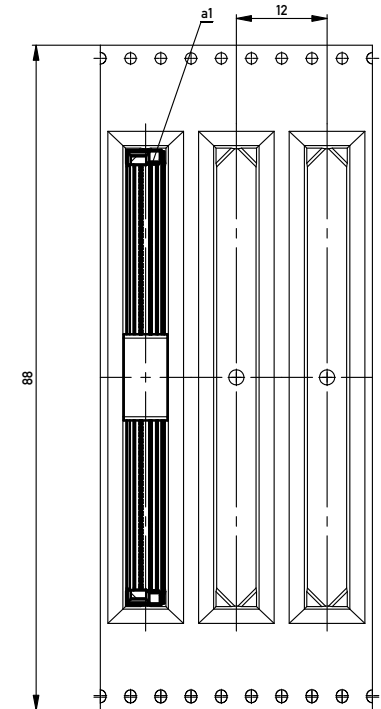


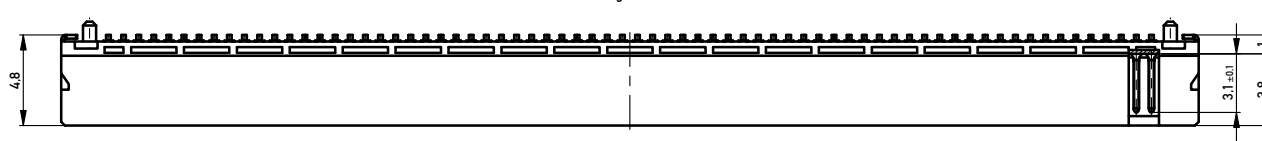
Verpackt in Gurtverpackung - Tape on Reel Packaging  
 Verpackungseinheit: 720 Stück - Packaging unit: 720 pcs



Abspulrichtung - Reel off Direction



ohne Ansaughaube - without hood



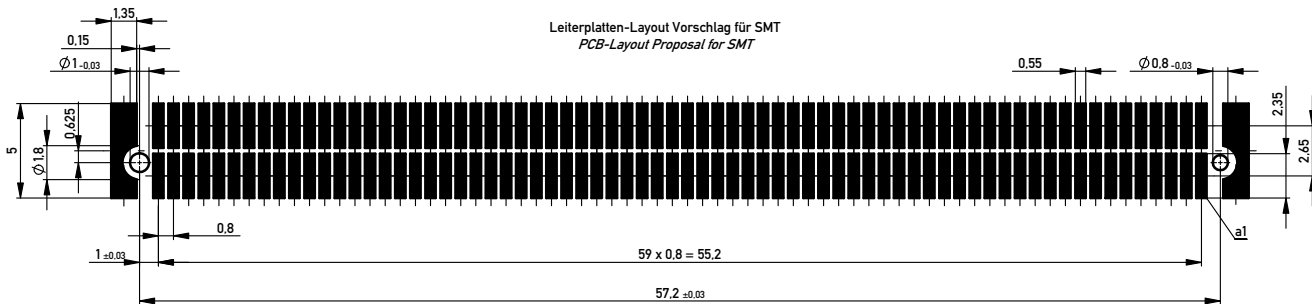
Anforderungsstufe 2  
 Performance Level 2

Kontaktbereich vergoldet  
 Mating Area gold plating

Anschlussbereich verzinkt 4-6 µm  
 Terminal Area 4-6 µm tin plating

Koplanarität der Anschlüsse ≤ 0.1 mm  
 Coplanarity Area of Termination ≤ 0.1 mm

Leiterplatten-Layout Vorschlag für SMT  
 PCB-Layout Proposal for SMT



Information:	Tolerances	Scale	5:1
All rights reserved. Only for Information. To ensure that this is the latest version of this drawing, please contact one of the ERNI companies before using.	Subject to modification without prior notice. Drawing will not be updated.	Designation	
		0.8 DRC-Q, M 1mm, 140 polig 0.8 DRC-Q, M 1mm, 140 pin	
ERNI	www.ERNI.com	294144	
Index	Date	Class	DRCQ

Copyright by ERNI GmbH  
 Proprietary notice pursuant to ISO 16949 to be observed