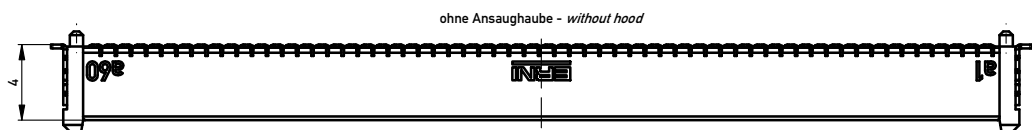
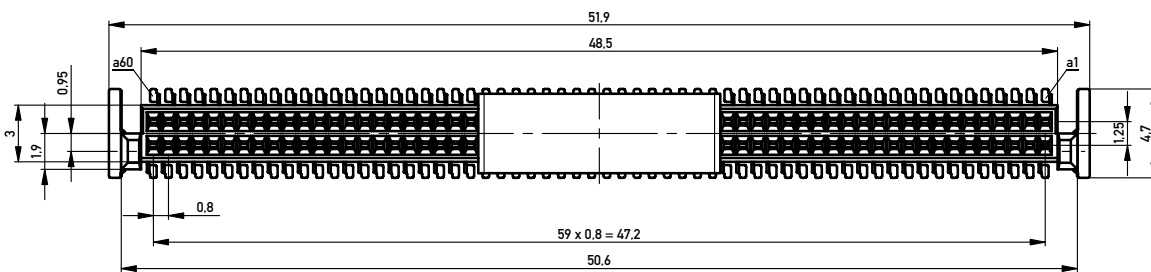
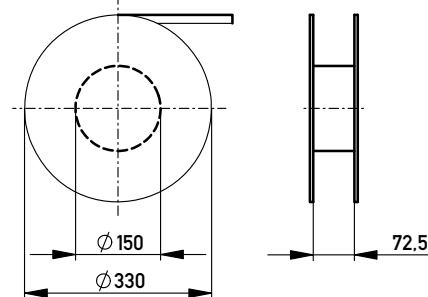
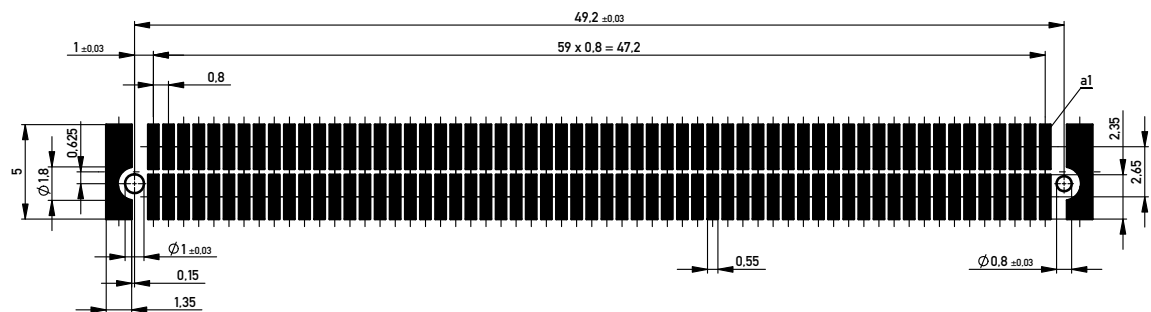


Verpackt in Gurtverpackung - *Tape on Reel Packaging*
 Verpackungseinheit: 840 Stück - *Packaging unit: 840 pcs*



Leiterplatten-Layout Vorschlag für SMT
PCB-Layout Proposal for SMT



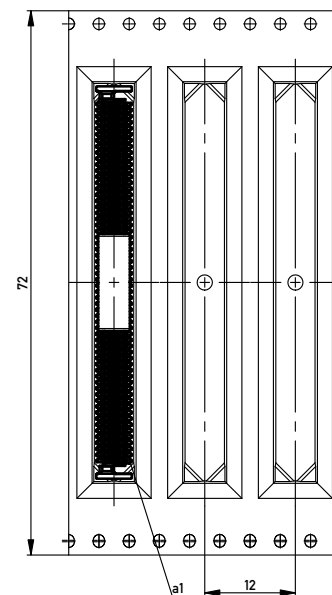
Anforderungsstufe 2
Performance Level 2

Kontaktbereich vergoldet
Mating Area gold plating

Anschlussbereich verzinkt 4-6 µm
Terminal Area 4-6 µm tin plating

Koplanarität der Anschlüsse ≤ 0.1 mm
Coplanarity Area of Termination ≤ 0.1 mm

Abspulrichtung - *Reel off Direction*



Information:	Tolerances		Scale	5:1
	All Dimensions in mm			
All rights reserved. Only for Information. To ensure that this is the latest version of this drawing, please contact one of the ERNI companies before using.	Subject to modification without prior notice. Drawing will not be updated.		Designation	
			0.8 DRC-B, F 4mm, 120 polig 0.8 DRC-B, F 4mm, 120 pin	
			www.ERNI.com	294010
Index	Date		Class	DRCB

Copyright by ERNI GmbH
 Proprietary notice pursuant to ISO 16949 to be observed