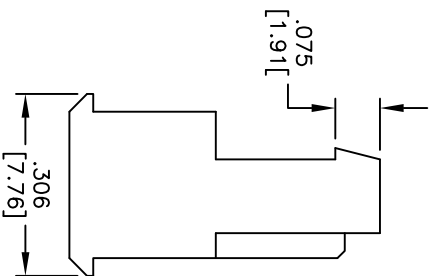
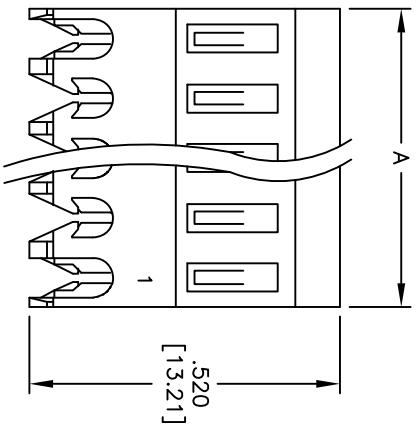
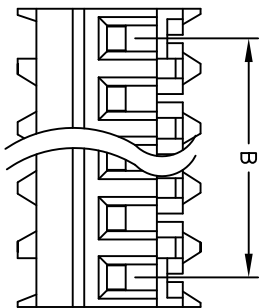


APPROVED: _____
 DATE: _____ TITLE: _____

Rev	AWO #	Description	Date	Appr
-		RELEASED	7/26/06	
A		REDRAWN	11/26/10	

PART NUMBER	WIRE SIZE	INSULATOR COLOR
MTD-A-XX-C-1	22 AWG	RED
MTD-A-XX-D-1	24 AWG	WHITE
MTD-A-XX-E-1	26 AWG	BLUE
MTD-A-XX-F-1	28 AWG	GREEN



Positions: 2 thru 24
 A = .100 [2.54] x No. of Positions
 B = .100 [2.54] x No. of Spaces

SPECIFICATIONS:
 Material: Nylon 66, rated UL 94V-2
 Contacts: Phosphor Bronze
 Plating: Tin over Copper underplate overall
 Electrical: Operating voltage: 250 VAC max.
 Current rating: 3 Amps max.
 Insulation resistance: 1,000 Mohms min.
 Dielectric withstanding voltage: 1,500 VAC for 1 minute
 Temperature Rating: Operating temperature: -40°C to +105°C
 Environmental: Lead free, RoHS compliant



ADAM TECH

909 Rahway Avenue, Union, NJ 07083
 Phone: 908-687-5000 Fax: 908-687-5710

IDC MASS TERMINATION HOUSING
 .100 [2.54] SPACING, FEED THRU

UNLESS OTHERWISE SPECIFIED ALL DIMENSIONS ARE INCHES [MM]		TOLERANCES: EXCEPT AS NOTED	
INCHES	HOLES	±.10	±.10
.XX	ØXXX	±.020	±.015
.XXX	ØXXX	±.015	±.010
APPROVALS	DATE	TITLE	
DRAWN SS	7/26/06	IDC MASS TERMINATION HOUSING	
CHECKED		.100 [2.54] SPACING, FEED THRU	
APPROVED		SIZE X	PART NO. MTD-A-XX-X-1
		REF:	SCALE: NTS SHEET 1 OF 1