

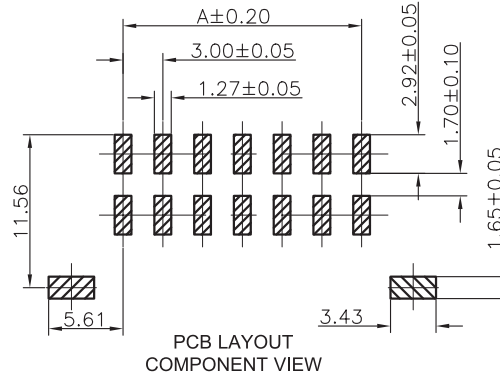
1

2

3

4

5



PCB LAYOUT COMPONENT VIEW

TECHNICAL CHARACTERISTICS

MATERIAL  
 INSULATOR: LCP  
 FLAMABILITY RATING: UL94-V0  
 COLOR: BLACK  
 CONTACT MATERIAL: COPPER ALLOY  
 CONTACT TYPE: STAMPED  
 CONTACT PLATING: TIN  
 QUALITY CLASS: 25 MATING CYCLES  
 PITCH: 3.00MM

ENVIRONMENTAL  
 OPERATING TEMPERATURE: -40 UP TO 105°C  
 COMPLIANCE: LEAD FREE AND ROHS

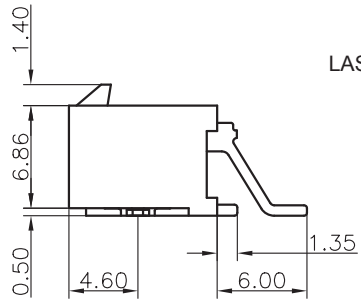
ELECTRICAL  
 CURRENT RATING: 5A  
 WORKING VOLTAGE: 250V AC  
 INSULATOR RESISTANCE: >1000 MOHM  
 DIELECTRIC WITHSTANDING VOLTAGE: 1500V AC/MN  
 CONTACT RESISTANCE: 10 mOHM MAX

STANDARD  
 CERTIFIED: E323964

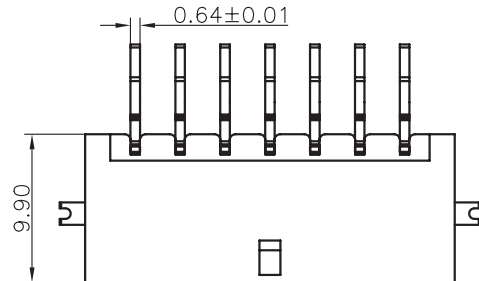
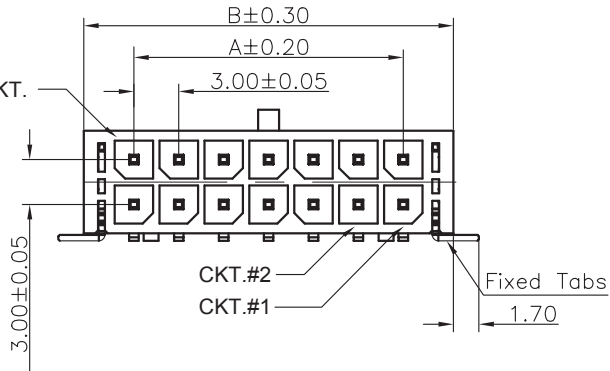
SOLDERING  
 JEDEC LEAD FREE REFLOW SOLDERING PROCESS

PACKAGING  
 TRAY

DIMENSION  
 A = 3.00 x (NB. PIN / 2 - 1)  
 B = 3.00 x (NB. PIN / 2 + 1) + 0.70



LAST CKT.



RoHS Compliant

PROJECTION:



GENERAL TOLERANCE

.X = +/- 0.2  
 .XX = +/- 0.15



APPROVAL: BBu

UNIT: MM

SCALE:

SHEET: 1/3

DRAW: PEARL

DESCRIPTION: 3.00MM MALE DUAL ROW SMT RIGHT ANGLE HEADER  
 SMT SOLDER TAB

WERI PART NO: 662 0xx 231 722

SIZE

A4

|     |             |            |    |  |  |  |  |
|-----|-------------|------------|----|--|--|--|--|
|     |             |            |    |  |  |  |  |
|     |             |            |    |  |  |  |  |
|     |             |            |    |  |  |  |  |
|     |             |            |    |  |  |  |  |
| I   | 02-JUL-15   | PINNING    | AK |  |  |  |  |
| H   | 20-JAN-2015 | PROJECTION | QP |  |  |  |  |
| REV | DATE        | FILE       | BY |  |  |  |  |

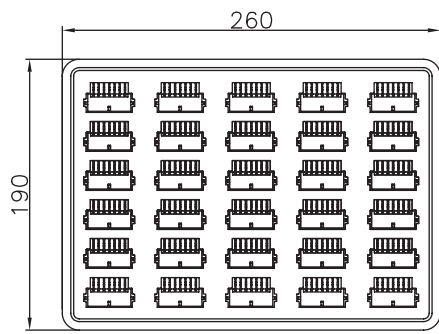
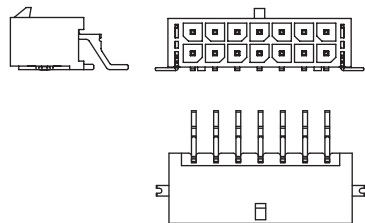
1

2

3

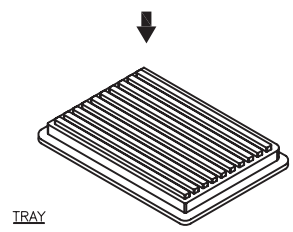
4

5

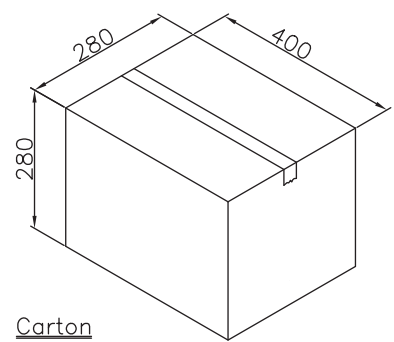
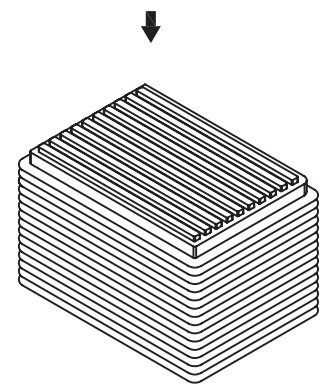


Tray

Note:  
 1.Dimension  
 Tray Size:260(L)x190(W)x12.0(H) (mm)  
 Carton Size:400X280X280(mm)  
 2.Quantity:  
 XX Pcs/Tray  
 48 Trays/Carton



TRAY



Carton

| Pin. | Pcs/Tray | Pcs/Carton | Pin. | Pcs/Tray | Pcs/Carton |
|------|----------|------------|------|----------|------------|
| 4    | 96       | 4608       | 16   | 56       | 2688       |
| 6    | 80       | 3840       | 18   | 48       | 2304       |
| 8    | 72       | 3456       | 20   | 40       | 1920       |
| 10   | 64       | 3072       | 22   | 40       | 1920       |
| 12   | 64       | 3072       | 24   | 40       | 1920       |
| 14   | 56       | 2688       |      |          |            |

|                |      |      |    |                 |   |  |  |                   |
|----------------|------|------|----|-----------------|---|--|--|-------------------|
| RoHS Compliant |      |      |    | PROJECTION:<br> | GENERAL TOLERANCE<br>.X = +/- 0.2<br>.XX = +/- 0.15 |  | DESCRIPTION: 3.00MM MALE DUAL ROW SMT RIGHT ANGLE HEADER<br>SMT SOLDER TAB | SIZE<br><b>A4</b> |
| G              |      |      |    |                 |   |  |  |                   |
| F              |      |      |    |                 | SCALE:  |  |  |                   |
| E              |      |      |    |                 | SHEET: 2/3  |  |  |                   |
| D              |      |      |    |                 | DRAW: PEARL   |  |  |                   |
| C              |      |      |    |                 |   |  |  |                   |
| B              |      |      |    |                 |   |  |  |                   |
| A              |      |      |    |                 |   |  |  |                   |
| REV            | DATE | FILE | BY |                 |   |  |  |                   |

1

2

3

4

5

## Cautions and Warnings:

This electronic component is designed and developed with the intention for use in general electronics equipments.

Before incorporating the components into any equipments in the field such as aerospace, aviation, nuclear control, submarine, transportation, (automotive control, train control, ship control), transportation signal, disaster prevention, medical, public information network etc. where higher safety and reliability are especially required or if there is possibility of direct damage or injury to human body, Würth Elektronik must be asked for a written approval.

In addition, even electronic component in general electronic equipments, when used in electrical circuits that require high safety, reliability functions or performance, the sufficient reliability evaluation-check for the safety must be performed before by the user before usage.

A

B

C

RoHS Compliant

|     |           |      |    |  |   |   |                   |
|-----|-----------|------|----|--|---|---|-------------------|
| G   |           |      |    | PROJECTION:<br> | GENERAL TOLERANCE<br>.X = +/- 0.2<br>.XX = +/- 0.15 |  |                   |
| F   |           |      |    |  |   |   |                   |
| E   |           |      |    |  |   |   |                   |
| D   |           |      |    |  |   |   |                   |
| C   |           |      |    | APPROVAL: JC   | UNIT: MM  | DESCRIPTION: DISCLAIMER   | SIZE<br><b>A4</b> |
| B   |           |      |    |  | SCALE:  |   |                   |
| A   | 10-SEP-14 | PDF  | QL |  | SHEET: 3/3  | WERI PART NO: DISCLAIMER  |                   |
| REV | DATE      | FILE | BY |  | DRAW: QL  |   |                   |

D