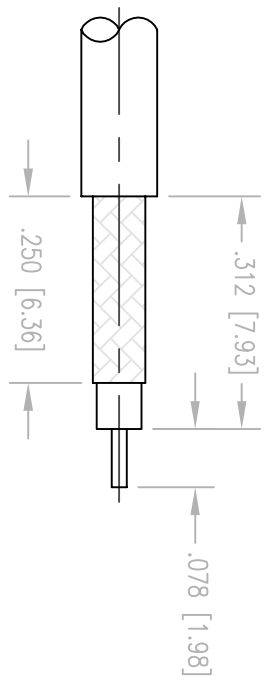
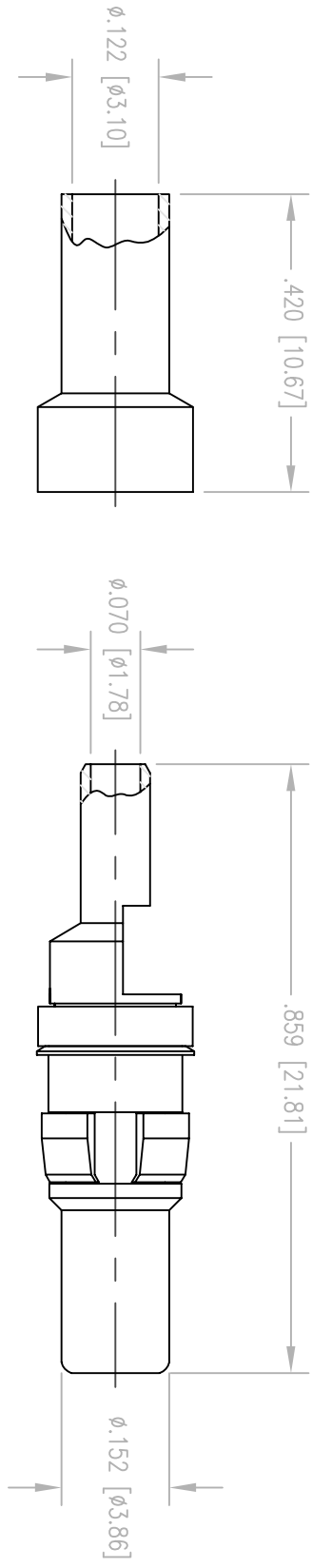


REV	DESCRIPTION	REV. APPD
D	NPR 3056	10/9/02



CABLE TRIMMING DIMENSIONS

- NOTES:
1. MATERIALS:
 CONTACT: COPPER ALLOY
 INSULATOR: TEFLON PER ASTM D1710
 CLIP RING AND SPRING WASHER: PHOSPHOR BRONZE PER ASTM B103
 ALL OTHER METAL PARTS: BRASS PER ASTM B16
 2. FINISH:
 CLIP RING: .000100 MIN. NICKEL PER QQ-N-290 OVER
 COPPER FLASH
 FERRULE: .000100 MIN. BRIGHT TIN PER MIL-T-10727 OVER
 COPPER FLASH
 SPRING WASHER: .000005 MIN. GOLD PER MIL-G-45204 OVER
 .000050 MIN. NICKEL PER QQ-N-290
 ALL OTHER METAL PARTS: .000015 MIN. GOLD PER MIL-G-45204 OVER
 .000050 MIN. NICKEL PER QQ-N-290
 3. FOR USE WITH RG-316 CABLE OR EQUIVALENT.
 4. FOR CABLING PROCEDURES USE CAP 9-01 WITH TRIMMING DIMENSIONS SHOWN.
 5. CRIMP FERRULE USING .128 HEX DIE.

PER ASME Y14.5M-1994 UNLESS OTHERWISE SPECIFIED: DIMENSIONS ARE IN INCHES (MM)		SCALE: 4:1	
TOLERANCES: .xx ± .01 [0.254] .xxx ± .005 [0.127]		ANGLES: 3°	
CUSTOMER DRAWING		TITLE	
WINCHESTER ELECTRONICS		RDM STRAIGHT PLUG	
DRAWN: JMH DATE: 10/9/02	CHECKED: [] DATE:	APPR'D: A	DATE: 270-910-0630C
APPROVED: [] DATE:	APPROVED: [] DATE:	SHI: 1	OF: 1
NORTHROP GRUMMAN		400 Park Road Watertown, CT 06795	