

*New Jersey Semi-Conductor Products, Inc.*

20 STERN AVE.  
 SPRINGFIELD, NEW JERSEY 07081  
 U.S.A.

TELEPHONE: (973) 376-2922  
 (212) 227-6005  
 FAX: (973) 376-8960

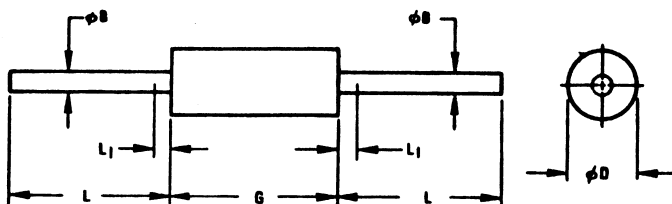
**PARAMETERS**

1N3898

**REF/REG DIODE,  $0W < P(D) \leq 250MW$**

**Description: Ref/Reg Diode,  $0W < P(D) \leq 250mW$**

Manufacturer..... many  
 Mil/High-Rel? (Y/N).....  
 Nom. Ref. Volt..... 2.0  
 Test Current..... 20m  
 Tol. (%)..... 5  
 PD Max. (W)..... 250m  
 Dyn. Zmax ( $\Omega$ )..... 10  
 Temp Coef pp/10k..... 23  
 Oper. Temp ( $^{\circ}C$ ) Max..... 150  
 Pkg Style..... DO-7  
 Surface Mounted (Y/N)..... N



MILLIMETER DIMENSIONS ARE DERIVED FROM ORIGINAL INCH DIMENSIONS

SYMBOL	INCHES		MILLIMETERS		NOTES
	MIN.	MAX.	MIN.	MAX.	
$\phi B$	.018	.022	0.458	0.558	-
$\phi D$	.085	.107	2.16	2.71	1
G	.230	.300	5.85	7.62	1
L	1.000	-	25.40	-	-
L <sub>1</sub>	-	.050	-	1.27	2

**NOTES:**

1. PACKAGE CONTOUR OPTIONAL WITHIN CYLINDER OF DIAMETER  $\phi D$  AND LENGTH G. SLUGS, IF ANY, SHALL BE INCLUDED WITHIN THIS CYLINDER BUT SHALL NOT BE SUBJECT TO THE MINIMUM LIMIT OF  $\phi D$ .
2. LEAD DIAMETER NOT CONTROLLED IN THIS ZONE TO ALLOW FOR FLASH, LEAD FINISH BUILD-UP, AND MINOR IRREGULARITIES OTHER THAN SLUGS.



Quality Semi-Conductors