

DIMENSIONS IN INCHES. DO NOT SCALE PRINT
DIMENSIONS THUS [] IN MM.

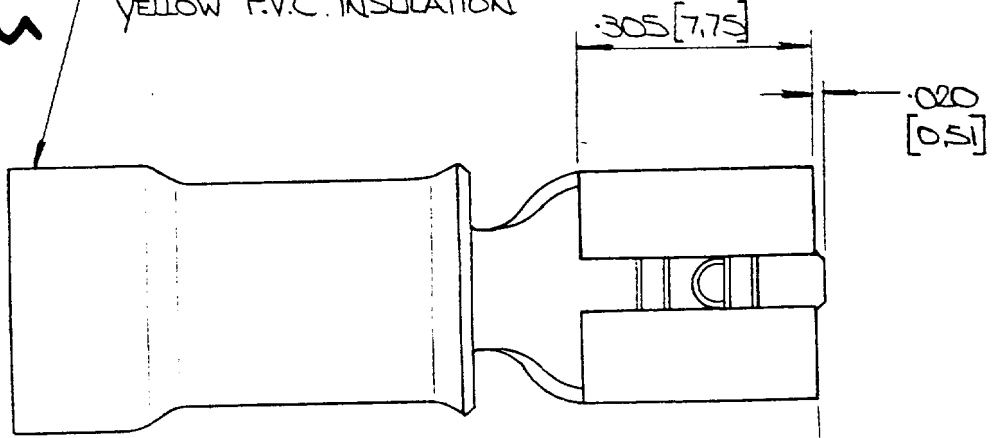
3rd ANGLE (AMERICAN) PROJECTION

587-266

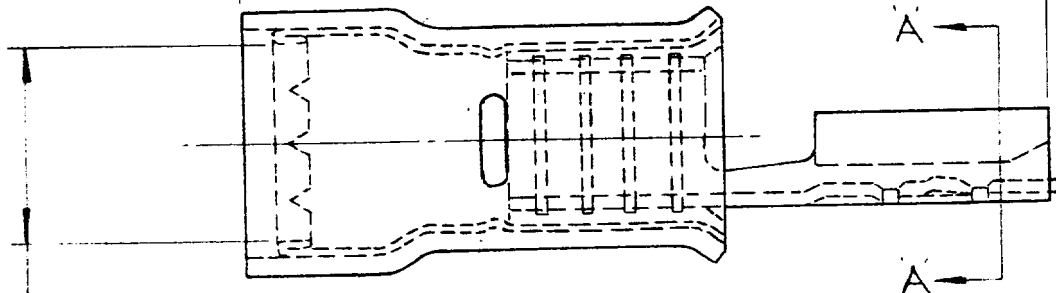
NUMBER
C-150432



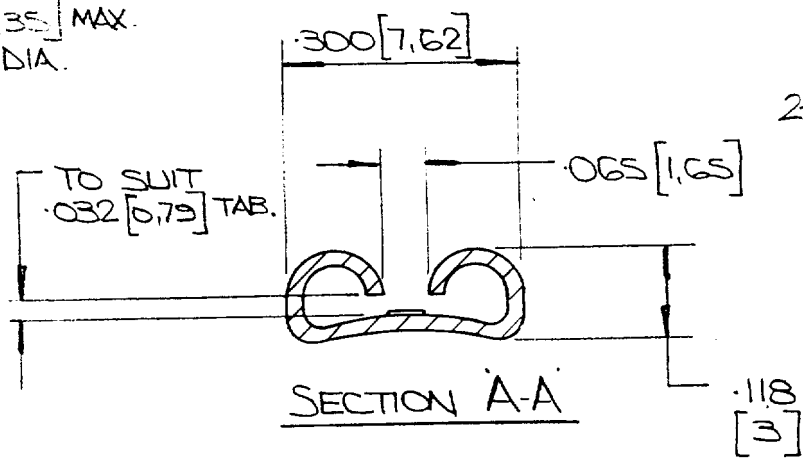
YELLOW P.V.C. INSULATION



1.024 [26] MAX.



FOR .250 [6.35] MAX.
INSULATION DIA.



150432-1
AS DRAWN
2150432-1
TAPE MOUNTED

© AIRCRAFT-MARINE PRODUCTS
GREAT BRITAIN LTD 1968

CUSTOMER COPY
REFERENCE ONLY

MATERIAL AND FINISH

BRASS



AIRCRAFT-MARINE PRODUCTS
GREAT BRITAIN LTD.
STANMORE, MIDDX.

ELECTRO-TINNED.

CLASS

B DRG NO WAS 150432-1

A TAPE MOUNTED ADDED PS 1/2/77
1/4/71

WIRE - RANGE - INSULATION
4-G mm² SEE ABOVE

TYPE P.I.D.G.

TOLERANCE EXCEPT AS NOTED
± 0.15 [0.4] ± 1° 0'

SCALE 5-1
LOC A NO C-150432

DESIGNED BY B.J. LUTMAN 28.5.68
CHECKED BY [Signature] 4.6.68

NAME '250' SERIES FASTON RECEPTACLE

PRINT DIST.