

# MR-328

Fanless Desktop Network Processing Appliance  
with Cavium Octeon® III CN7010 800MHz



## ■ Features

- Cavium Octeon® III CN7010 800 MHz processor
- Supports hardware acceleration / virtualization
- Onboard 6 x GbE RJ45 switch ports
- Support 2 pairs of LAN bypass
- Supports onboard DDR3 2GB ECC memory
- 1 x Mini-PCIe
- Fanless design

## ■ Preliminary Specifications

### Processor System

CPU	Cavium Octeon® III CN7010
Frequency	800MHz
Core Number	Single core
BIOS	AMI SPI Flash BIOS
Chipset	N/A

### Memory

Technology	DDR3
Max. Capacity	2 GB
Socket	Onboard

### Ethernet

Controller	Marvell® 88E6172 + Intel i210
Speed	10/100/1000 Mbps
Interface	6 x RJ-45
Bypass	2 pairs of LAN bypass

### Storage

Type	SATA
Installation	1 x 2.5" drive bay (Optional)
Type	SD
Installation	1 x SD slot

### I/O

Reset Button	Yes
Console	1 x RJ45
USB	2 x USB 2.0 front ports
IPMI	N/A
Management port	N/A

### Expansion

PCIe	1 x Mini-PCIe
PCI	N/A

### Cooling

Processor	Passive CPU heatsink
System	Fanless

### Environment

Operating Temperature	0 ~ 40°C
Storage Temperature	-20 ~ 70°C
Relative Humidity	5% ~ 95%, non-condensing

### Miscellaneous

LCD Module	N/A
Watchdog	Yes
Internal RTC with Li Battery	Yes

### Mechanical

Dimension (W x H x D)	231 x 44 x 200 mm
Weight	2 kg
Mounting	Optional Rack mount kit available

### Power

Type / Watts	36 W power adapter
Input	AC 110~220V

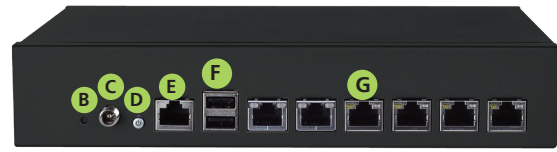
### Driver Support

Microsoft Windows	N/A
Linux	Linux Kernel 2.6 or above

### Certification

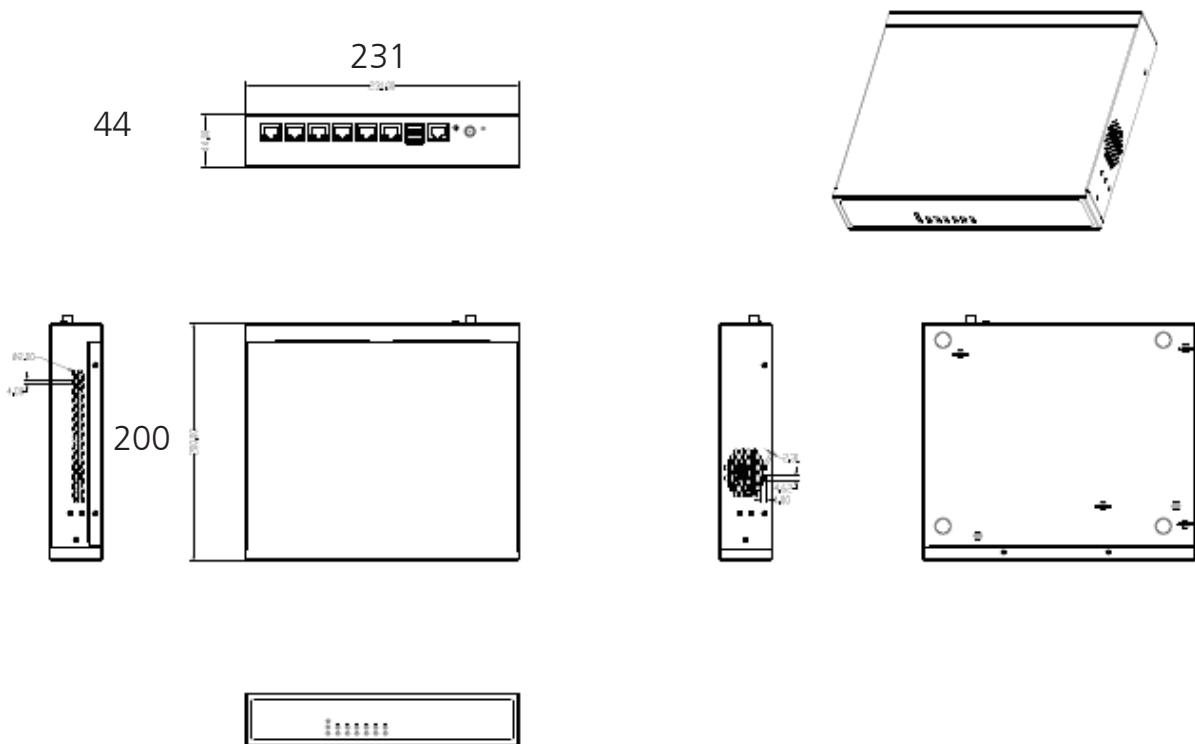
EMC	CE Class B, FCC Class B
Safety	N/A

## ■ Product I/O View



- A** Status LEDs
- B** Reset button
- C** Power plug with lock
- D** Power on/off
- E** Console port
- F** 2 x USB 2.0 ports
- G** 6 x GbE RJ45 ports

## ■ Dimensions (WxHxD): 231 x 44 x 200 mm



## ■ Ordering Information

**MR-328**

Fanless Desktop Network Processing Appliance with Cavium Octeon® III CN7010 800MHz

V.1-2015.7.27

# Lanner

© Lanner Electronics Inc. All rights reserved.  
All product specifications are subject to change without notice.  
[connect@lannerinc.com](mailto:connect@lannerinc.com) | [www.lannerinc.com](http://www.lannerinc.com)