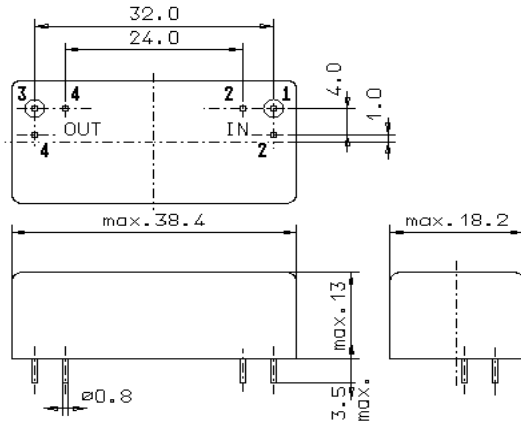


Specification for monolithic crystal filter:

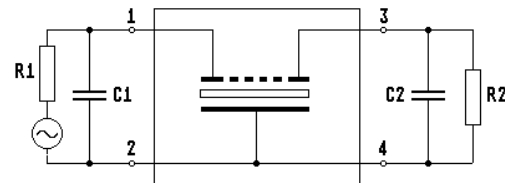
MQF 45.0-1600/04

1. General

1.1. Package:



GM17



- | | |
|-----------------------------------|------------------|
| 1.2. Type name: | MQF 45.0-1600/04 |
| 1.3. Number of poles: | 8 |
| 1.4. Operating temperature range: | -20°C to +70°C |
| 1.5. Storage temperature range: | -45°C to +85°C |

2. Electric values

- | | |
|---|---|
| 2.1. Nominal centre frequency fo: | 45.0 MHz |
| 2.2. Pass band | |
| 2.2.1. Bandwidth between 3 dB - frequencies: | > fo ± 8.0 kHz |
| 2.2.2. Ripple: | < 0.7 dB at fo ± 5.0 kHz |
| 2.2.3. Group delay distortion: | < 20 μs at fo ± 5.0 kHz |
| 2.2.4. Insertion loss:
(measured on smallest attenuation in pass band) | < 4.0 dB |
| 2.2.5. Return loss at fo ± 5 kHz: | > 15.6 dB (VSWR < 1.4) |
| 2.3. Stop band | |
| 2.3.1. fo ± 25 kHz | > 70 dB |
| 2.3.2. Alternate attenuation | > 80 dB |
| 2.4. Terminating impedance (input and output): | 50 Ω // 0 pF |
| 2.5. Input power level for reference measurement: | 0 dBm |
| 2.5.1. Maximum input power level without destruction: | +15 dBm |
| 3. Marking: | manufacturer, date code
MQF 45.0-1600/04 |
| 4. Environment conditions: | Corresponding to Vectron standard CF001 |

Edited by: _____ date: _____ name: _____