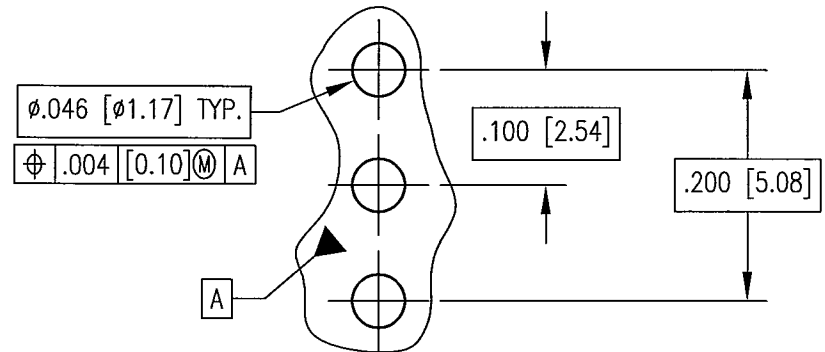
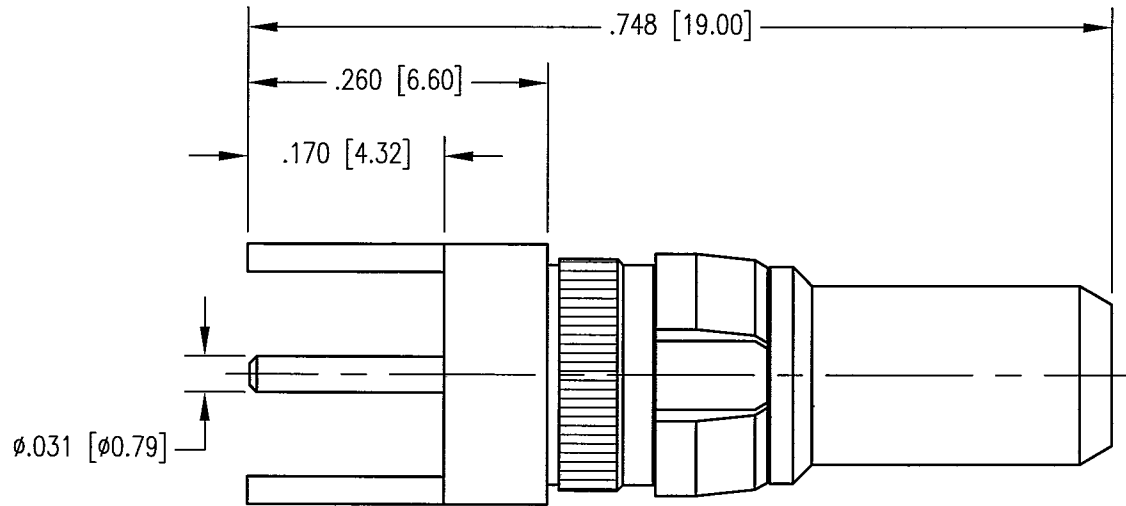
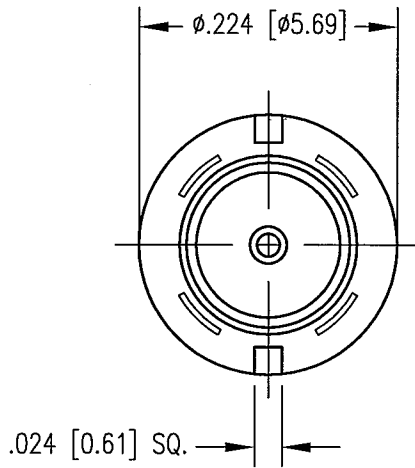


DWG. NO.		310-010-6142A	
REV	DESCRIPTION	BY DATE	APPD
A	ECR 7442	8/13/98 JMC	<i>Jim</i>



RECOMENDED MOUNTING HOLES

NOTES:

- MATERIALS:
 BODY: BRASS PER ASTM B16
 CONTACT: COPPER ALLOY
 INSULATOR: TEFLON PER ASTM D1710
 CLIP RING: BERYLLIUM COPPER PER ASTM B194
- FINISH:
 CLIP RING: .000100 MIN. NICKEL PER QQ-N-290 OVER COPPER FLASH
 ALL OTHER METAL PARTS: .000050 MIN. GOLD PER MIL-G-45204 OVER .000050 MIN. NICKEL PER QQ-N-290

PER ASME Y14.5M-1994 UNLESS OTHERWISE SPECIFIED: DIMENSIONS ARE IN INCHES [MM]		NORTHROP GRUMMAN	
TOLERANCES: DECIMALS .XX ± .01 [0.254] XXX ± .005 [0.127] ANGLES ± 2° SCALE: 4:1		Winchester Electronics 400 Park Road Watertown, CT 06795	
CUSTOMER DRAWING		TITLE KNURLED 31 SERIES STRAIGHT RDM PLUG	
DRAWN KJT	DATE 8/26/98	CHECKED JED	DATE 8/26/98
APPROVED JMC	DATE 8/26/98	APPROVED JMC	DATE 8/26/98
A 310-010-6142A		SHT. OF 1 1	REV. A