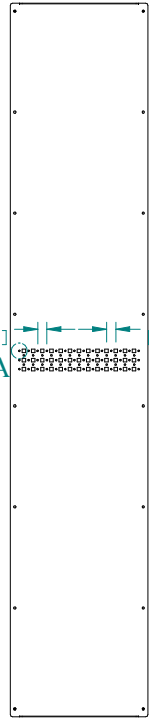
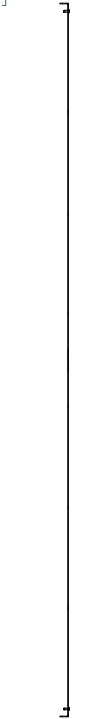


25mm [ 0.98in ]      25mm [ 0.98in ]  
 A



REAR VIEW

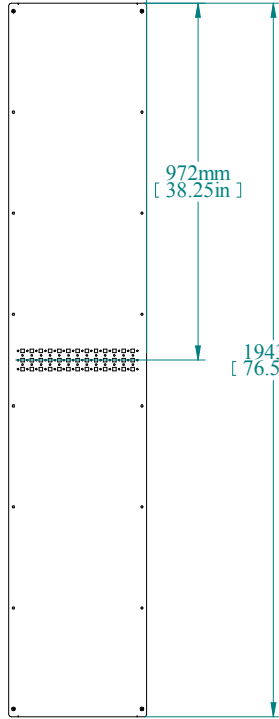
23mm [ 0.9in ]



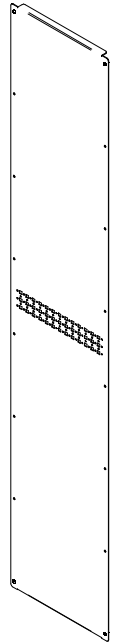
L.S VIEW

323mm [ 12.71in ]  
 TOP VIEW

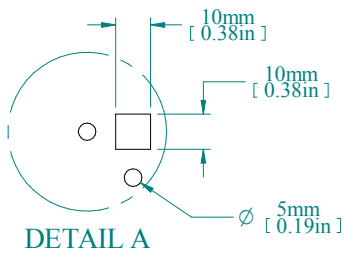
375mm [ 14.76in ]



FRONT VIEW



ISOMETRIC VIEW



DETAIL A

PART NUMBERS	
HSIP225	14 GAUGE GALVANIZED STEEL

NOTES
Unpainted Allows installation of 19" mounting rails including center support Hammond Website for Additional Accessories

Data subject to change without notice. Isometric drawing not to scale.



**HAMMOND  
MANUFACTURING™**  
 www.hammondmfg.com  
 PART NO. HSIP225