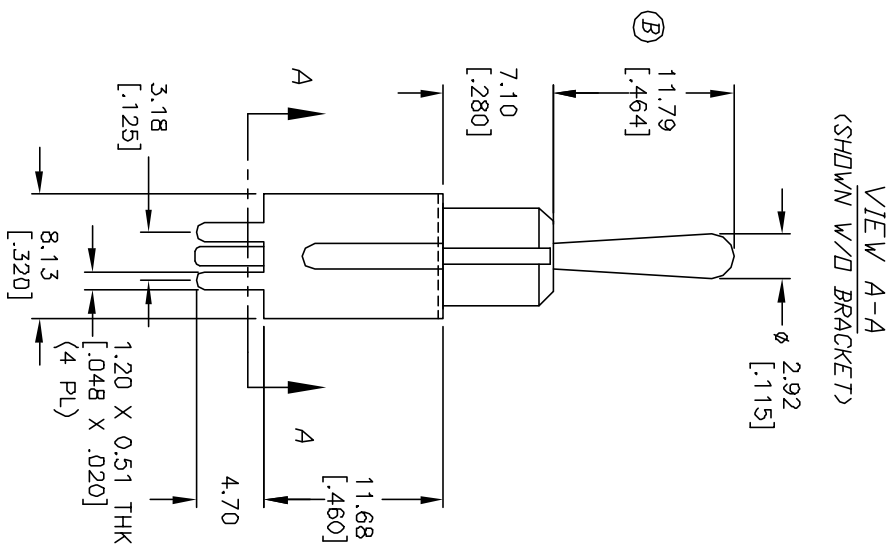
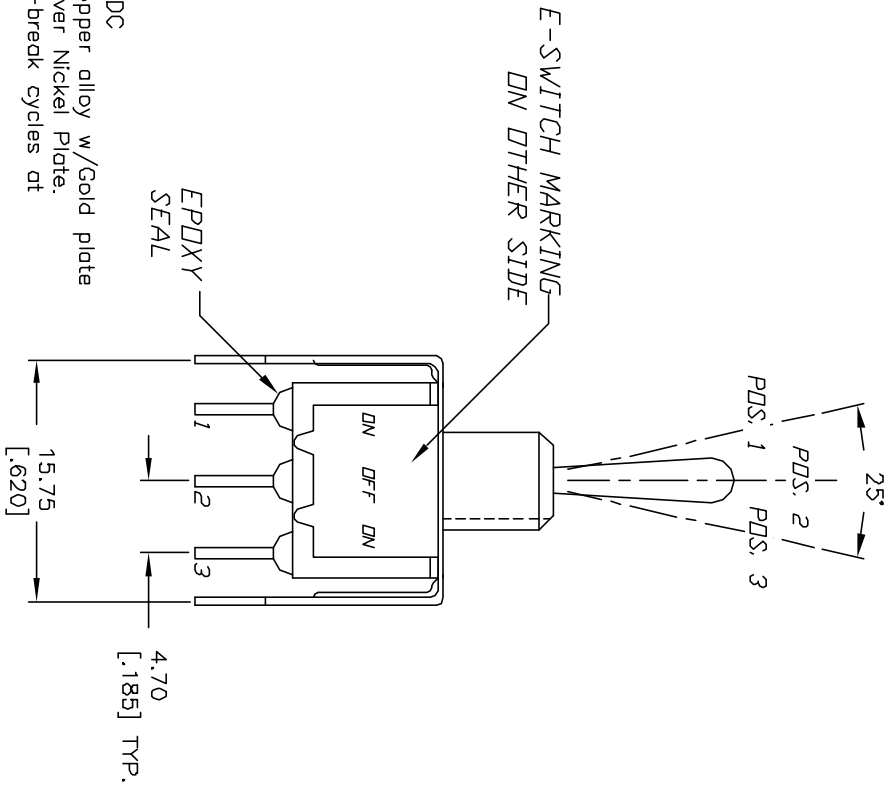


CIRCUIT: SPDT

POS. 1	POS. 2	POS. 3
DN	OFF	DN
2-3	OPEN	2-1

NOTES:

1. ALL DIMENSIONS IN MM [INCH]
2. GENERAL TOLERANCE: X.X=±0.4
X.XX=±0.25
3. TERM. NOS. FOR REF. ONLY
4. RATING: 0.4 (VA) Max. @20V AC or DC
5. FIXED TERM. & MOVING CONTACT: Copper alloy w/Gold plate
Over Nickel Plate.
6. ELECTRICAL LIFE: 50,000 make-and-break cycles at full load.
7. INSULATION RESISTANCE: 1000M ohm min.
8. DIELECTRIC STRENGTH: 1000V RMS min. @sea level.
9. OPERATING TEMP.: -30°C to 85°C



E-SWITCH®

REV. B		11547		REVISED ACTUATOR		6/29/01		CJB	
REV. B		ECN No.		DESCRIPTION		DATE		CHKD	
TITLE: 100 SP-3 T1 B4 V52 R E									
SCALE: 2:1		DATE: 5/14/01		DR: CJB		DWG: T113041		REV: B	

THE INFORMATION CONTAINED IN THIS DOCUMENT IS PROPRIETARY TO E-SWITCH AND IS NOT TO BE COPIED OR TRANSMITTED