

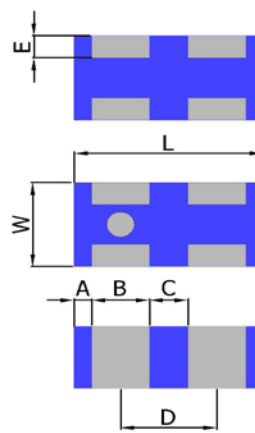
PRODUCT FEATURES

1. Surface mount balun matched filter with a small size of 1.0 X 0.5 X 0.4 mm, RoHS compliant.
2. Provide conjugate match to AR6003 chipset.
3. Highly stable under temperature and humidity changes.

RF CHARACTERISTICS

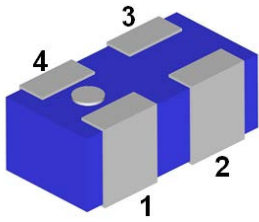
P/N BM2450R0402AT	Specification
Frequency range	2400 - 2500 MHz
Insertion Loss	1.4 dB max
VSWR	2.0 max
Impedance (Unbalanced)	50 Ω
Impedance (Balanced)	Conjugate to AR6003 chipset
Phase Difference	180° ± 10°
Amplitude Difference	2.0 dB Max
Operating temperature range	-40°C to +85°C

PHYSICAL DIMENSIONS



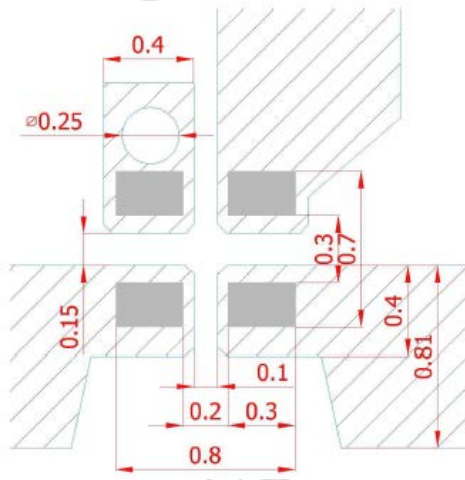
Symbol	Dimension (mm)
L	1.00 ± 0.10
W	0.5 ± 0.10
T	0.4 ± 0.10
A	0.10 ± 0.10
B	0.30 ± 0.10
C	0.20 ± 0.10
D	0.50 ± 0.10
E	0.125 ± 0.10

TERMINAL CONFIGURATION



PIN	Definition
P1	Unbalanced Port
P2	GND
P3	Balanced port
P4	Balanced port

PCB DESIGN/LAYOUT CONSIDERATION



Note:

- Unit in mm
- Design trace width to be 50Ω impedance.

- LAND
- Solder resist
- No pattern Solder resist

Typical RF Performance

