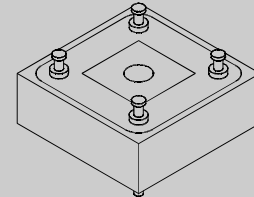


200 V - 1,000 V Single Phase Bridge

22.0 A - 25.0 A Forward Current

70 ns - 3000 ns Recovery Time

1502B - 1510B
1502FB - 1510FB
1502UFB - 1510UFB

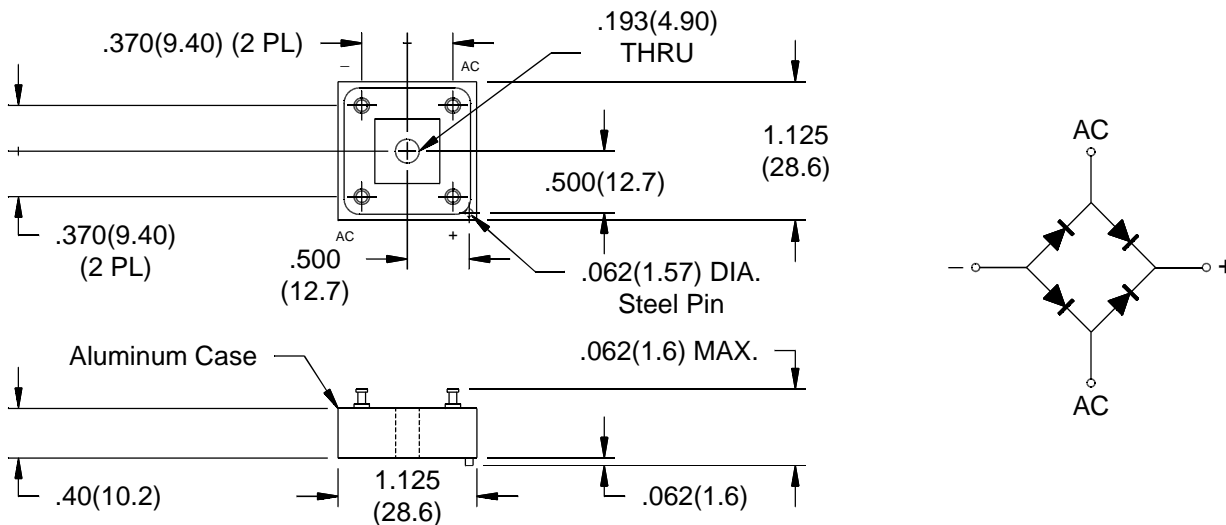


ELECTRICAL CHARACTERISTICS AND MAXIMUM RATINGS

Part Number	Working Reverse Voltage (V _{rwm})	Average Rectified Current @TC (I _o)		Reverse Current @ V _{rwm} (I _r)		Forward Voltage (V _f)		1 Cycle Surge Current tp=8.3ms (I _{fsm})	Repetitive Surge Current (I _{frm})	Reverse Recovery Time (1) (T _{rr})	Thermal Impd. θ _{J-C}
		55°C	100°C	25°C	100°C	25°C		25°C	25°C	25°C	
	Volts	Amps	Amps	µA	µA	Volts	Amps	Amps	Amps	ns	°C/W
1502B 1506B 1510B	200 600 1000	25.0 25.0 25.0	18.0 18.0 18.0	1.0 1.0 1.0	25 25 25	1.1 1.1 1.1	3.0 3.0 3.0	150 150 150	25 25 25	3000 3000 3000	2.0 2.0 2.0
1502FB 1506FB 1510FB	200 600 1000	25.0 25.0 25.0	18.0 18.0 18.0	1.0 1.0 1.0	25 25 25	1.2 1.5 1.5	3.0 3.0 3.0	150 150 150	25 25 25	150 150 150	2.0 2.0 2.0
1502UFB 1506UFB 1510UFB	200 600 1000	22.0 22.0 22.0	13.0 13.0 13.0	1.0 1.0 1.0	25 25 25	1.7 1.7 1.7	3.0 3.0 3.0	150 150 150	25 25 25	70 70 70	2.0 2.0 2.0

(1)T_{rr} Testing: I_f=0.5A, I_r=1.0A, I_{rr}=0.25A *Op. Temp. & Stg. Temp. = -55°C to +150°C Isolation Voltage: 2000V

10



Dimensions: In. (mm) • All temperatures are ambient unless otherwise noted. • Data subject to change without notice.



VOLTAGE MULTIPLIERS INC.
 8711 W. Roosevelt Ave.
 Visalia, CA 93291

TEL 559-651-1402
 FAX 559-651-0740
www.voltagemultipliers.com

1502B - 1510B • 1502FB - 1510FB • 1502UFB - 1510UFB

