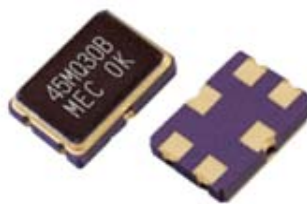


SMD 4 poles
7.0 x 5.0 x 1.3 mm



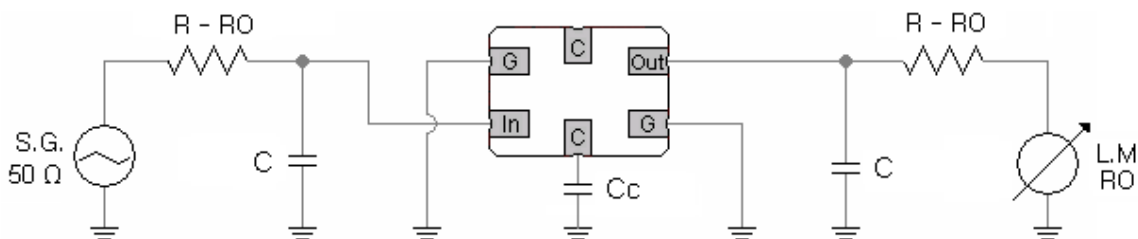
Features

- Thin and light weight; excellent shock and vibration resistance
- Suitable for automatic pick and place; Solder reflow capable
- Specifically designed for mobile, wireless communications, pagers, cellular and cordless phones.

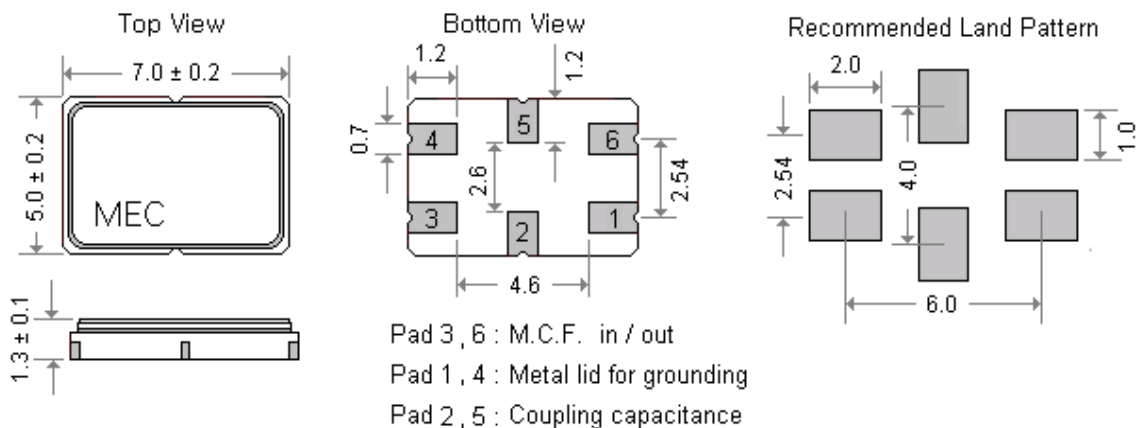
General Specifications

Parameters	Electrical Spec.
Center Frequency	45.000 MHz
Crystal Cut (No. of poles)	AT-Cut , 4 poles
Mode of Oscillation	Fundamental Mode
Pass Band Width	± 15 KHz (min.) [at -3 dB]
Stop Band Width	± 40 KHz (max.) [at -30 dB]
Ripple	1.0 dB (max.)
Insertion Loss	3.0 dB (max.)
Guaranteed Attenuation	80 dB (min.) [-910 ± 10 kHz]
Terminating Impdace	1200 Ω // 1.0 pF [Cc : 2.5 pF]
Operating Temperature	- 20°C to 70°C
Storage Temperature	- 50°C to 100°C

Test Cycle



Outline Dimensions (Unit : mm)



Mercury www.mercury-crystal.com