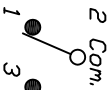


RECOMMENDED PCB LAYOUT

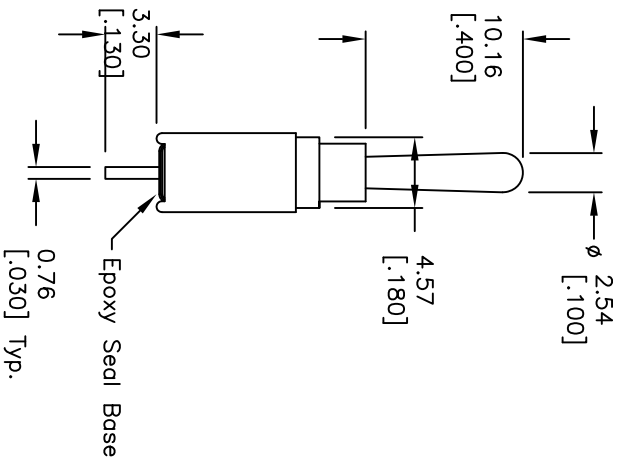
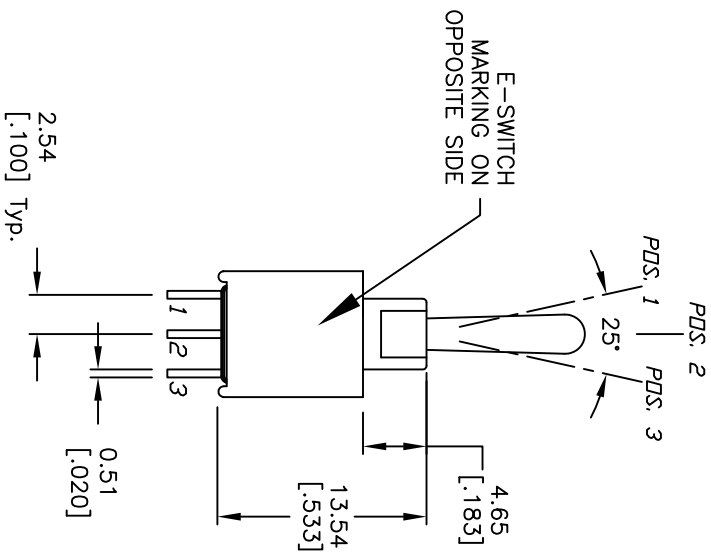
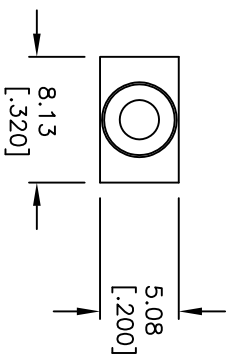


CIRCUIT: SPDT  
CONTACT CONFIGURATION

SWITCH FUNCTION		
PDS. 1	PDS. 2	PDS. 3
DN	OFF	DN
2-3	OPEN	2-1

NOTES:

1. ALL DIMENSIONS IN MM [INCH]
2. GENERAL TOLERANCE: X.X=±0.4  
X.XX=±0.25
3. TERMINAL NUMBERS FOR REF ONLY
4. RATING: 3A @120V AC or 28VDC;  
1A @250VAC.
5. FIXED TERM. & MOVING CONTACT:  
Copper ALLOY W/Silver plate.
6. ELECTRIC LIFE: 50,000 make-and-break cycles  
at full load.
7. INSULATION RESISTANCE: 1,000 Mega-ohm min.
8. DIELECTRIC STRENGTH: 1,000 V RMS @sea level.
9. OPERATING TEMP.: -30C to +85C



**E-SWITCH**

200AWMSP3T1A1M2QE

TITLE

SCALE

2:1

DATE

5/31/02

DR

CB

DWG

T201206

REV

E

E	21002	13.54 WAS 13.39	2/4/13	EBP
D	12200	REVISED AND REDRAWN	5/31/02	CB
REV.	ECN No.	DESCRIPTION	DATE	CHKD

THE INFORMATION CONTAINED IN THIS DOCUMENT IS PROPRIETARY TO E-SWITCH AND IS NOT TO BE COPIED OR TRANSFERRED