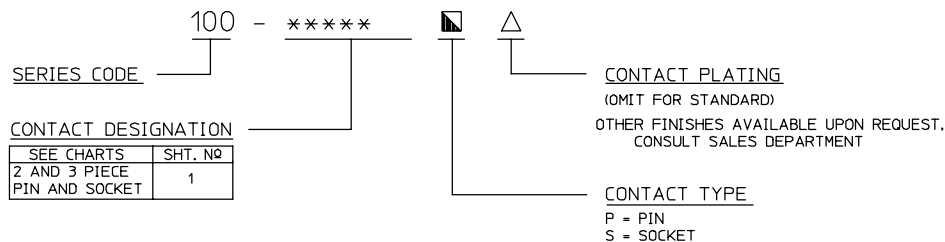


REV	DESCRIPTION	BY DATE	APPD
A	RELEASED ECR# 4177	K.D.B. 03/28/96	W.P.M.

NOTES:

1. CATALOG NUMBER CODE:

100 SERIES CODE ORDER CHART



2 CRIMP CONTACTS AVAILABLE ON REELS (2000/REEL).
SEE CHART FOR REEL PART NO.

SPECIFICATIONS

MATERIALS & FINISHES

- ① *Socket Contact* ————— *Material: Copper Alloy*
Finish: Standard= 80"/0.2µm Gold Over Nickel
- ② *Pin Contact* ————— *Material: Copper Alloy*
Finish: Standard= 80"/0.2µm Gold Over Nickel
- ③ *Retainer Clip* ————— *Material: Beryllium Copper Alloy*
Finish: Gold Plated
- ④ *Sleeve* ————— *Material: Stainless Steel*
Finish: Passivating Dip

PERFORMANCE CHARACTERISTICS

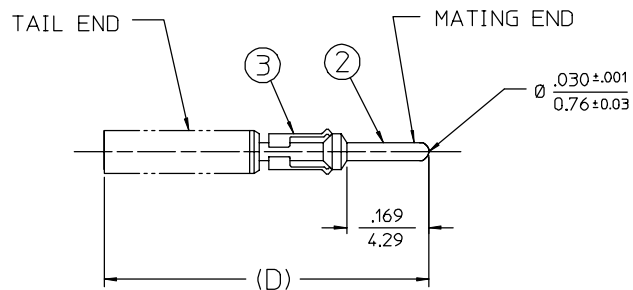
Current rating ————— *5 amps. max. per individual contact*

ACCESSORY TOOLS

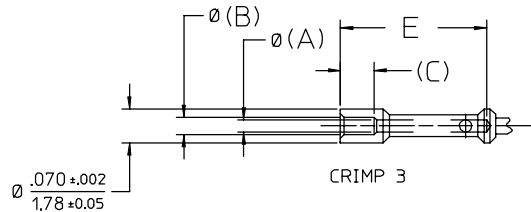
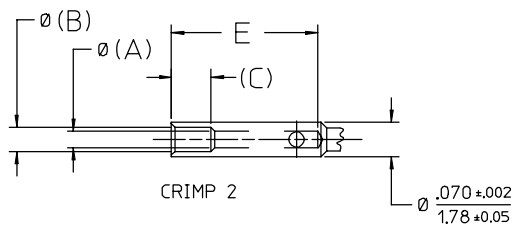
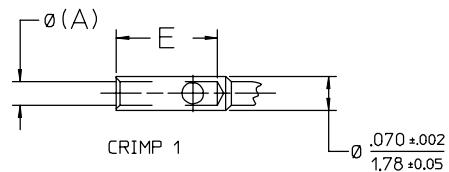
DESCRIPTION	CATALOG NO	LOCATORS/POSITIONERS
INSERTION TOOL	107-1011	—————
REMOVAL TOOL	107-1012	
PNEUMATIC AUTOMATIC CRIMP	107-0952	
NON-ADJUSTABLE MINIATURE HAND CRIMP	107-43300	107-43302
ADJUSTABLE MINIATURE HAND CRIMP	107-0625	107-0626
GAGE PLUG	5431	—————

PER ANSI Y14.5M-1982 UNLESS OTHERWISE SPECIFIED: DIMENSIONS ARE IN INCHES OR INCHES / MM		Litton Winchester Electronics 400 PARK ROAD WATERTOWN, CONNECTICUT 06795	
TOLERANCES — MM DECIMALS .XX ± .005 .XXX ± 0.13 ANGLES ± SCALE: 5:1		TITLE SREC/42 REMOVABLE PIN & SOCKET CONTACTS	
CUSTOMER DRAWING			
DRAWN K.D.B.	DATE 03/28/96	CHECKED W.P.M.	DATE 03/29/96
APPROVED V.B.H.	DATE 03/28/96	APPROVED R.D.R.	DATE 03/29/96
C		22892	SHT. 1 OF 2 REV. A

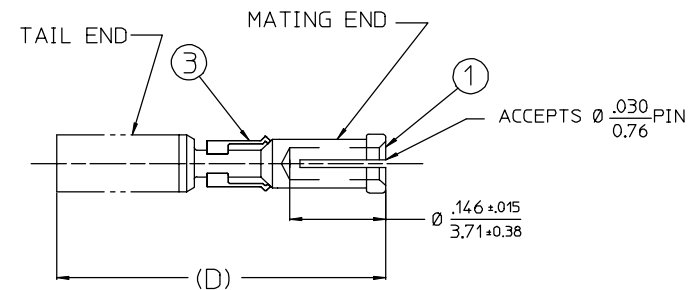
REV	DESCRIPTION	BY DATE	APPD
A	RELEASED ECR# 4177	K.D.B. 03/28/96	W.P.M.



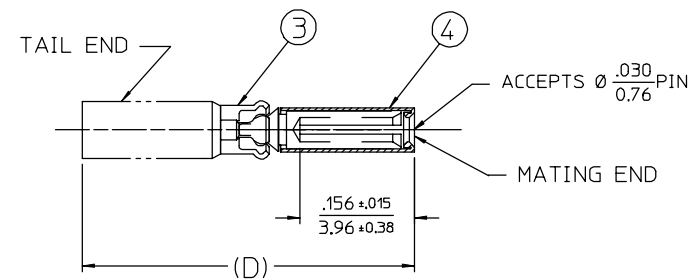
CATALOG NO 100-40**P-Δ SHOWN
PIN



TAIL OPTIONS



CATALOG NO 100-40**S-Δ SHOWN
2 PIECE SOCKET



CATALOG NO 100-540**S-Δ SHOWN
3 PIECE SOCKET

CATALOG NO	REEL CAT. NO	WIRE SIZE	TAIL OPTION	A	B	C	D	E
100-4020P-Δ	100-0801P-Δ	20-22	CRIMP 1	.046/1.17	—	—	.500/12.70	.156/3.96
100-4024P-Δ	100-0805P-Δ	24-26-28	CRIMP 2	.028/0.71	.055/1.40	.065/1.65	.566/14.38	.234/5.94
100-4028P-Δ	100-0809P-Δ	28-30	CRIMP 3	.020/0.51	.043/1.09	.055/1.40	—	—
100-4020S-Δ	100-0802S-Δ	20-22	CRIMP 1	.046/1.17	—	—	.473/12.01	.156/3.96
100-4024S-Δ	100-0806S-Δ	24-26-28	CRIMP 2	.028/0.71	.055/1.40	.065/1.65	.539/13.69	.234/5.94
100-4028S-Δ	100-0810S-Δ	28-30	CRIMP 3	.020/0.51	.043/1.09	.055/1.40	—	—
100-54020S-Δ	100-0804S-Δ	20-22	CRIMP 1	.046/1.17	—	—	.488/12.40	.156/3.96
100-54024S-Δ	100-0823S-Δ	24-26	CRIMP 2	.028/0.71	.055/1.40	.065/1.65	.544/13.82	.234/5.94
100-54028S-Δ	—	28-30	CRIMP 3	.020/0.51	.043/1.09	.055/1.40	—	—

UNLESS OTHERWISE SPECIFIED: DIMENSIONS ARE IN INCHES OR INCHES / MM		Litton Winchester Electronics 400 PARK ROAD WATERTOWN, CONNECTICUT 06795	
TOLERANCES DECIMALS XX ± .005 XXX ± .013	FR OR INCHES / MM	ANGLES ±	SCALE: 5:1
CUSTOMER DRAWING		TITLE SREC/42 REMOVABLE PIN & SOCKET CONTACTS	
DRAWN K.D.B.	DATE CHECKED 03/28/96	DATE W.P.M. 03/29/96	REV. A
APPROVED V.B.H.	DATE APPROVED 03/28/96	DATE R.D.R. 03/29/96	22892 SMT 2 OF 2

June 2006 - This drawing became the property of Winchester Electronics Corporation, Wallingford, CT.