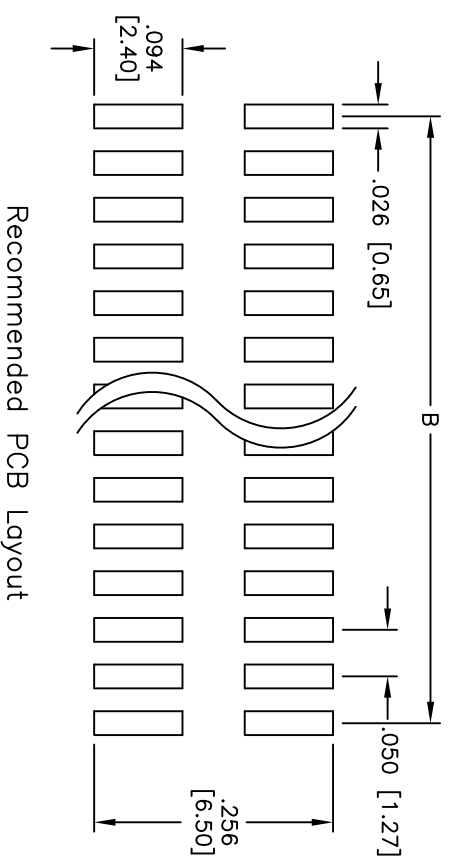
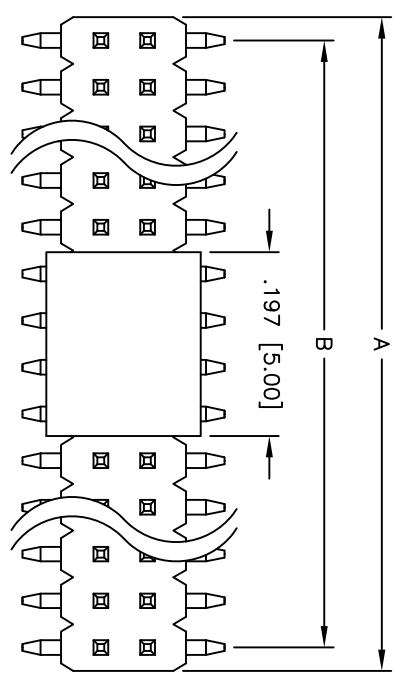
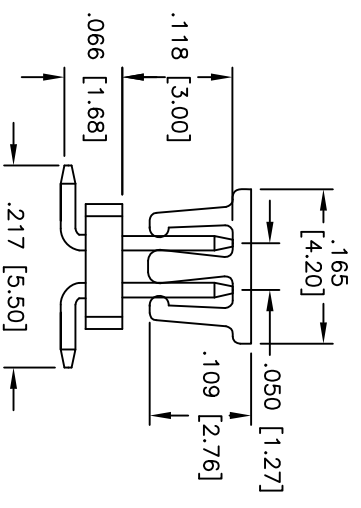
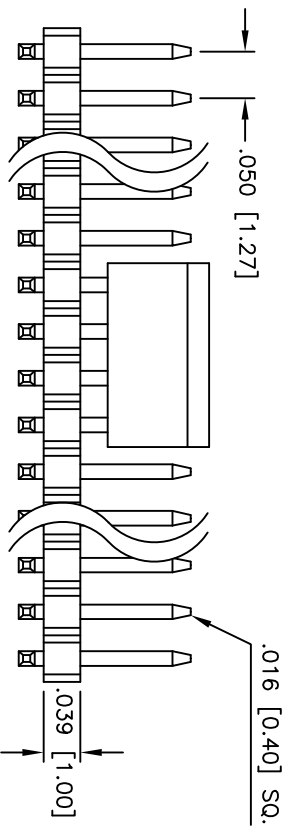


| Rev | AWO # | Description | Date    | Appr |
|-----|-------|-------------|---------|------|
| -   |       | RELEASED    | 7/14/08 |      |

APPROVED: \_\_\_\_\_  
 DATE: \_\_\_\_\_ TITLE: \_\_\_\_\_



Recommended PCB Layout



**PACKAGED ON TPAAE & REEL**

Positions: 8 thru 80  
 A = .050 [1.27] x No. of Positions per Row  
 B = .050 [1.27] x No. of Spaces

**SPECIFICATIONS:**

Material: Nylon 6T, glass reinforced, rated UL 94V-0  
 Insulator color: Black  
 Contacts: Brass  
 Plating: 10u" Gold over Nickel underplate on contact area, Tin over copper underplate on tails.  
 Electrical:  
 Operating voltage: 250 VAC max  
 Current rating: 3 Amps max  
 Contact resistance: 20 mohms max  
 Insulation resistance: 5,000 Mohms min @ 500 VDC  
 Dielectric withstanding voltage: 1,000 VAC for 1 minute  
 Temperature Rating:  
 Operating temperature: -55°C to +105°C  
 Environmental:  
 Lead free, RoHS compliant  
 Recommended soldering temp: 260°C for 5 seconds



**ADAM TECH**

909 Railway Avenue, Union, NJ 07083  
 Phone: 908-687-5000 Fax: 908-687-5710

TITLE: .050 [1.27] DUAL ROW PIN HEADER, SMT,  
 PICK & PLACE CAPE, 10u" SEL GOLD PLATED

|   |                             |                             |        |
|---|-----------------------------|-----------------------------|--------|
| UNLESS OTHERWISE SPECIFIED<br>ALL DIMENSIONS ARE IN INCHES [MM] |                             | TOLERANCES: EXCEPT AS NOTED |        |
| INCHES  |                             | HOLDS                       |        |
| .X  | ± .10                       | ØX                          | ± .10  |
| .XX   | ± .020                      | ØXXX                        | ± .015 |
| .XXX  | ± .015                      | ØXXXX                       | ± .010 |
| APPROVALS   | DATE                        |                             |        |
| DRAWN   | DY                          | 7/14/08                     |        |
| CHECKED   |                             |                             |        |
| APPROVED  |                             |                             |        |
| SIZE  | PART NO.                    | REV.                        |        |
| X   | HPH2-A-XX-SGA-SMT-10-PP-T/R | -                           |        |
| REF:  | SCALE: NTS                  | SHEET                       | 1 OF 1 |