

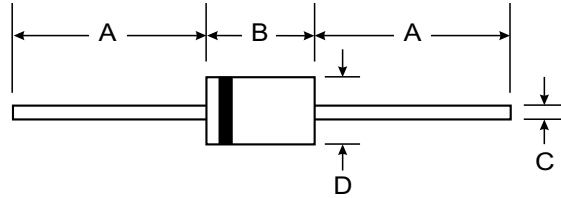


1S1553-1S1555

0.1A Axial Leaded Small Signal Switching Diode

Features

- Silicon epitaxial planar diode
- High speed switching diode
- These diodes are also available in glass case DO-34



Mechanical Data

- Case: DO-35, glass case
- Polarity: Color band denotes cathode
- Weight: 0.004 ounces, 0.13 grams
- Mounting position: Any

DO-35		
Dim	Min	Max
A	25.40	—
B	—	4.00
C	—	0.60
D	—	2.00
All Dimensions in mm		

MAXIMUM RATINGS AND ELECTRICAL CHARACTERISTICS

@ $T_A = 25^\circ\text{C}$ unless otherwise specified

Type	$I_{(AV)}$	V_{RRM}	V_R	I_{FSM}	V_{FM}		$I_{RM}@V_{RRM}$		t_{rr}
							$T_A = 25^\circ\text{C}$		
		$(I = I_{RM})$	I_R	V_R					
A	V	V	A	V	A	μA	V	ns	
1S1553	0.1	70	60	1.0	1.4	0.1	1.0	20	4.0
1S1555	0.1	35	30	1.0	1.4	0.1	1.0	20	4.0