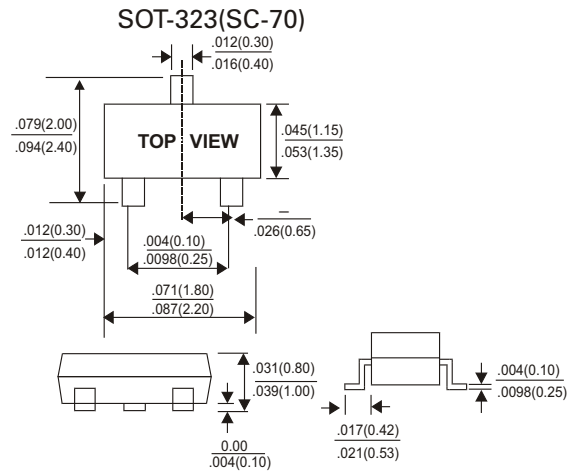
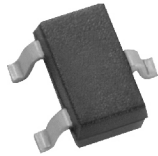


PSD451F

SURFACE MOUNT SCHOTTKY BARRIER DIODES

SMALL SIGNAL SCHOTTKY DIODES 100m AMPERES 40 VOLTS



FEATURES

- *Small mold type.
- *Low VF
- *High reliability.

CONSTRUCTION

Silicon epitaxial planer

MAXIMUM RATING (T_A=25°C unless otherwise noted)

Characteristic	Symbol	Value	Unit
Reverse Voltage (repetitive peak)	V _{RM}	40	Volts
Reverse Voltage (DC)	V _R	40	mA
Average rectified forward current	I _O	100	mA
Forward Current surge peak (60Hz, 1cyc)	I _{FSM}	1	A
Operating Junction Temperature Range	T _J	125	°C
Storage Temperature Range	T _{stg}	150	°C

ELECTRICAL CHARACTERISTICS (T_A=25°C unless otherwise noted)

Characteristic	Symbol	Min	Typ	Max	Unit
Forward Voltage I _F =100mA	V _{F1}	-	-	0.55	Volts
I _F =10mA	V _{F2}	-	-	0.34	
Capacitance between terminals (V _R =10V, f=1.0MHz)	C _T	-	6.0	-	pF
Reverse current (V _R =10V)	I _R	-	-	30	μA _{dc}

PSD451F

SURFACE MOUNT SCHOTTKY BARRIER DIODES

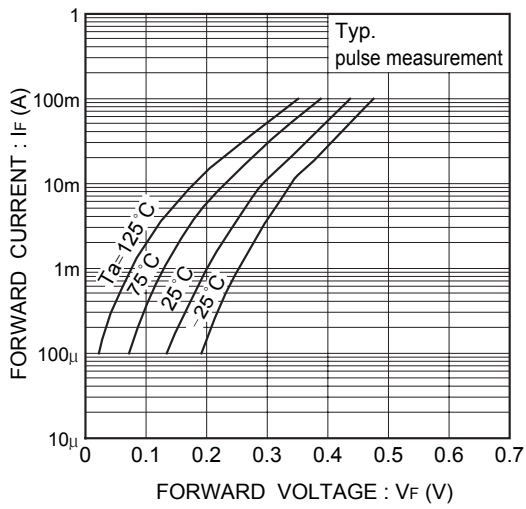


Fig. 1 Forward characteristics

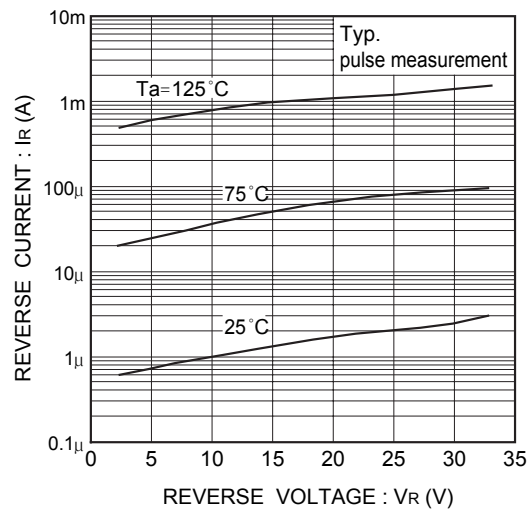


Fig. 2 Reverse characteristics

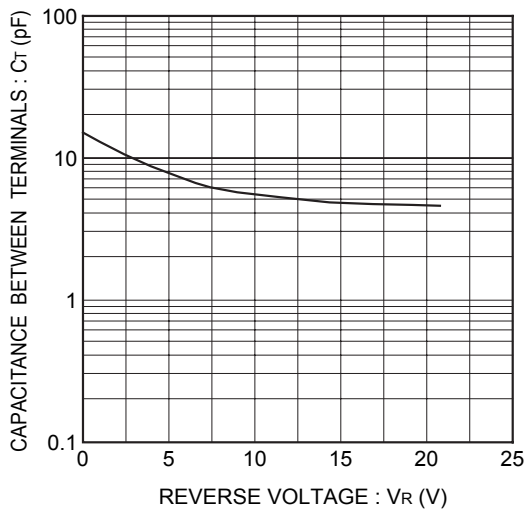


Fig. 3 Capacitance between terminals characteristics

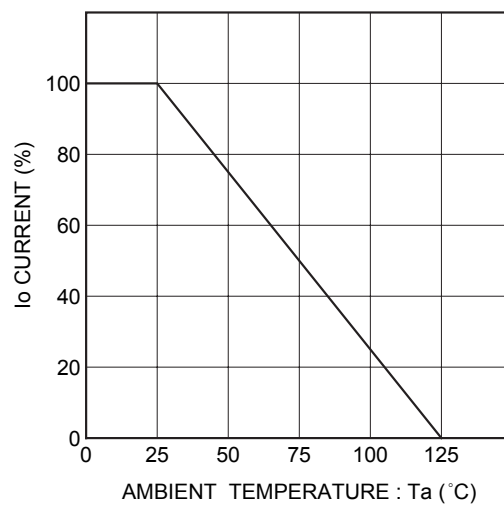


Fig. 4 Derating curve (mounting on glass epoxy PCBs)