

# 200 V - 1,000 V Rectifiers

1.5 A Forward Current  
2000 ns Recovery Time

**1N5614U 1N5616U**  
**1N5618U 1N5620U**  
**1N5622U**

SURFACE MOUNT  
HERMETICALLY SEALED



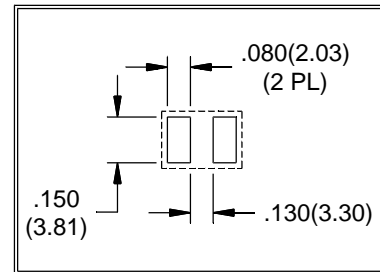
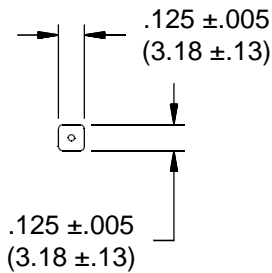
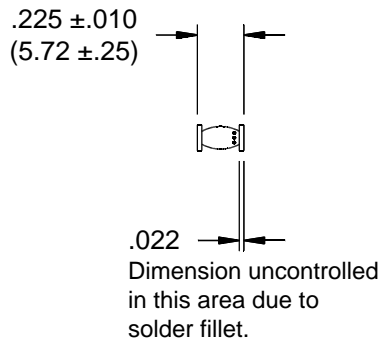
## ELECTRICAL CHARACTERISTICS AND MAXIMUM RATINGS

Part Number	Working Reverse Voltage (V <sub>rw</sub> )	Average Rectified Current (I <sub>o</sub> )		Reverse Current @ V <sub>rw</sub> (I <sub>r</sub> )		Forward Voltage (V <sub>f</sub> )		1 Cycle Surge Current t <sub>p</sub> =8.3ms (I <sub>fsm</sub> )	Repetitive Surge Current (I <sub>frm</sub> )	Reverse Recovery Time (3) (T <sub>rr</sub> )	Thermal Impd. θ <sub>J-C</sub>	Junction Cap. @50VDC @1kHz (C <sub>j</sub> )
		55°C(1)	100°C(2)	25°C	100°C	25°C	25°C	25°C	25°C	25°C	25°C	25°C
	Volts	Amps	Amps	µA	µA	Volts	Amps	Amps	Amps	ns	°C/W	pF
1N5614U	200	1.50	0.75	0.5	25	1.3	3.0	30	10	2000	5	16
1N5616U	400	1.50	0.75	0.5	25	1.3	3.0	30	10	2000	5	16
1N5618U	600	1.50	0.75	0.5	25	1.3	3.0	30	10	2000	5	16
1N5620U	800	1.50	0.75	0.5	25	1.3	3.0	30	10	2000	5	16
1N5622U	1000	1.50	0.75	0.5	25	1.3	3.0	30	10	2000	5	16

(1)TC=55°C (2)TC=100°C (3)I<sub>f</sub>=0.5A, I<sub>r</sub>=1.0A, I<sub>rr</sub>=0.25A \*Op. Temp.= -65°C to +175°C Stg. Temp.= -65°C to +200°C

**6**

Markings:  
Three Dots for polarity.



Dimensions: In. (mm) • All temperatures are ambient unless otherwise noted. • Data subject to change without notice.



**VOLTAGE MULTIPLIERS INC.**  
8711 W. Roosevelt Ave.  
Visalia, CA 93291

TEL 559-651-1402  
FAX 559-651-0740  
www.voltagemultipliers.com

# 1N5614U 1N5616U 1N5618U 1N5620U 1N5622U

