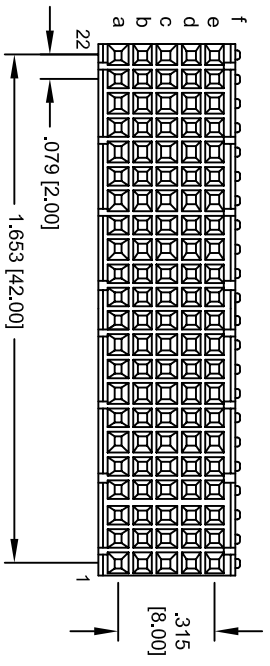
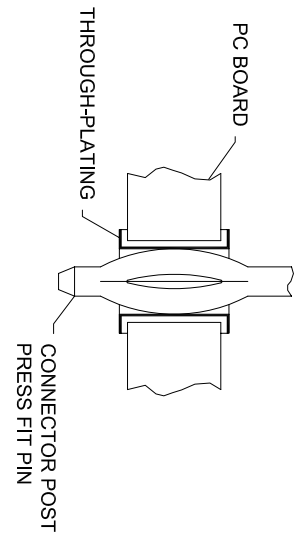
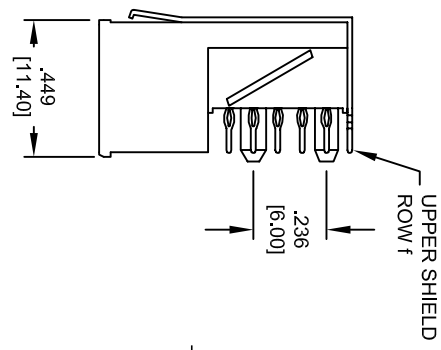
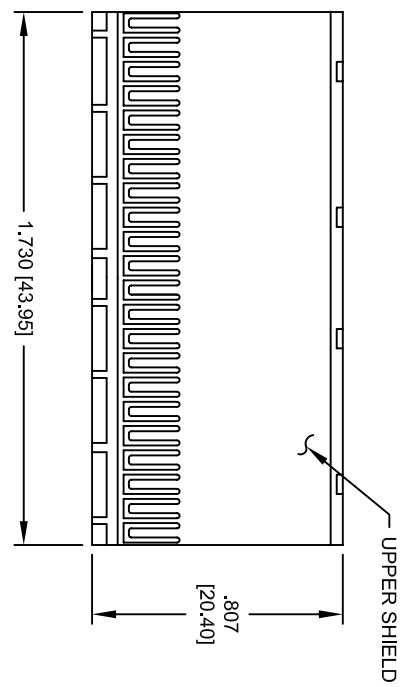
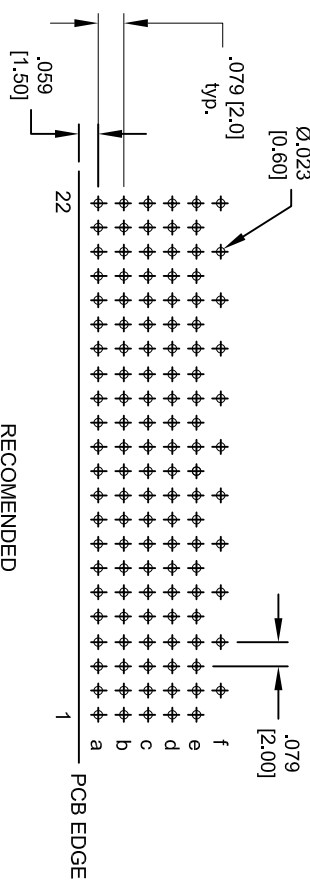
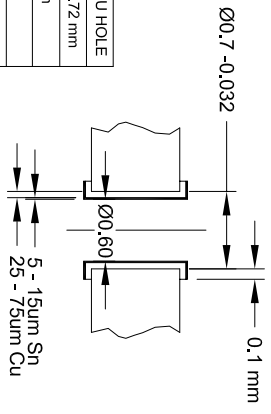


Rev	AWO #	Description	Date	Appr
-		RELEASED	12/19/05	

APPROVED: _____
 DATE: _____ TITLE: _____



RECOMMENDED PCB PLATED THRU HOLE	
DRILLED HOLE	Ø0.69 - 0.72 mm
	Min. 25µm
	5 - 15 µm
PLATED THRU HOLE	Ø0.55 - 0.65mm



RECOMMENDED
PCB LAYOUT

SPECIFICATIONS:
 Material: Insulator: PBT 30% glass filled, rated UL94V-0
 Insulator color: Gray
 Contacts: Phosphor Bronze
 Plating: 30u" Gold over 40u" nickel underplate on contact area, Sn/Pb (>5% Pb) on tails.
 Electrical: Operation voltage: 500V rms.
 Current rating: 1 Amp / contact (all signal contacts loaded) @ 70°C
 Contact resistance: 20 mohms max.
 Insulation resistance: 10 Mohms min.
 Dielectric withstanding voltage: 1000V AC for 1 min.
 Environmental: Operating temperature: -55°C to +125°C
 Environmental: Lead free, RoHS compliant.
 Recommended soldering temp: 235 for 5 sec.



UNLESS OTHERWISE SPECIFIED
ALL DIMENSIONS ARE INCHES [MM]
TOLERANCES: EXCEPT AS NOTED

INCHES	HOLES
.X ± .10	Ø.X ± .10
.XX ± .020	Ø.XXX ± .015
.XXX ± .015	Ø.XXXX ± .010

ADAM TECH
 909 Rahway Avenue, Union, NJ 07083
 Phone: 908-687-5000 Fax: 908-687-5710

APPROVALS	DATE	TITLE	SIZE	PART NO.	REV.
DRAWN	SS	12/19/05	X	2CP-B22-F-110-2-1	
CHECKED					
APPROVED					