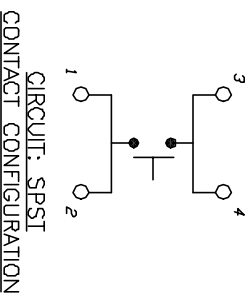
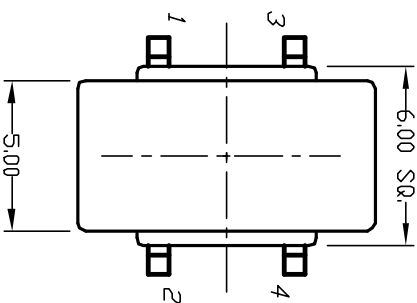
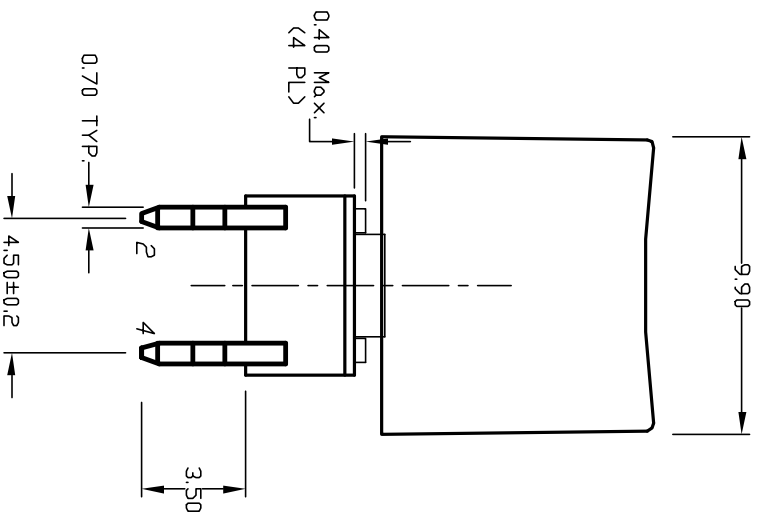
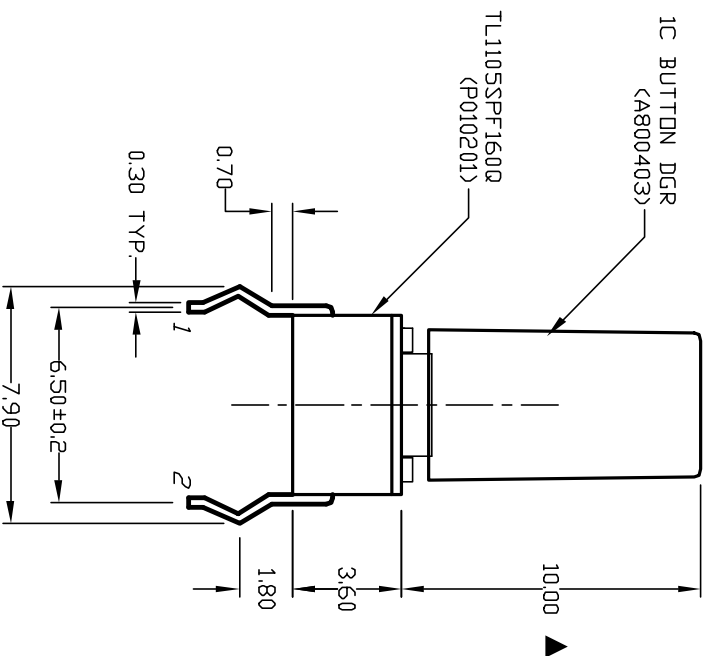


RECOMMENDED P.C.B. LAYOUT



- NOTES:
1. ALL DIMENSIONS IN MM
 2. GENERAL TOLERANCE: X.X=±0.4
X.XX=±0.25
 3. TERM. NOS. FOR REF. ONLY
 4. RATING: 50mA, @12V DC
 5. TRAVEL: 0.25±0.1mm
 6. OPERATING FORCE: 160±50gf
 7. CONTACT RESISTANCE: 100 milliohms Max.
 8. ELECTRICAL LIFE: 100,000 CYCLES MIN.
 9. DESIGNATE MAJOR DIMENSIONS



E-SWITCH®

| | | | | |
|------|---------|----------------------|---------|------|
| REV. | ECN NO. | RELEASED DESCRIPTION | DATE | CHKD |
| A | | | 4/30/02 | CJB |

| | | | | | |
|-------------------------------------|-------|---------|-----|---------|-----|
| TITLE | SCALE | DATE | DR | DWG | REV |
| TL 1105 SP F160 Q/1C DGR - VERTICAL | 4:1 | 4/30/02 | CJB | XP01284 | A |

THE INFORMATION CONTAINED IN THIS DOCUMENT IS PREPARED FOR THE SWITCH AND IS NOT TO BE COPIED OR TRANSMITTED