



# PRODUCT SPECIFICATION

REV A January 2010

Oscilent Controlled Document

| Ordering Code / Part Number | Product Description |
|-----------------------------|---------------------|
| 803-RF243.95M-B             | PHS, IF SAW Filter  |

## Specification Contents

- o Mechanical Dimensions
- o Test Circuit
- o Maximum Ratings
- o Electrical Specification
- o Frequency Performance

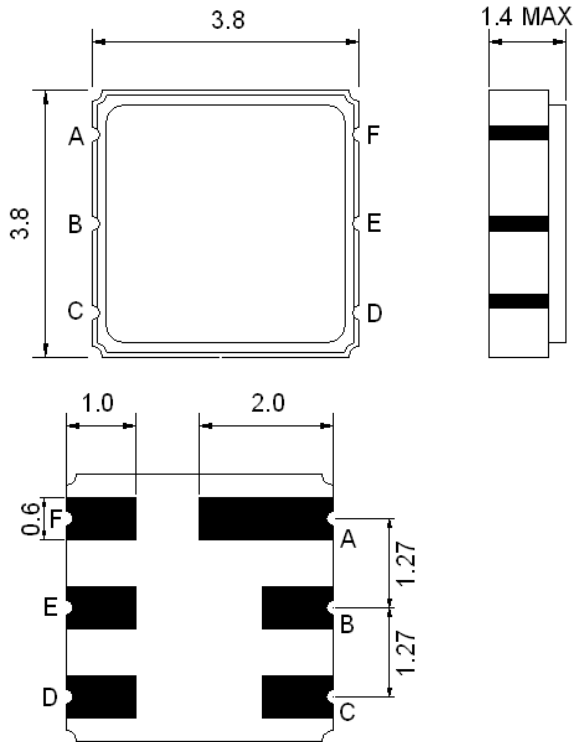
## Notes

- o Electrostatic Sensitive Device (ESD) 
- o Avoid excessive ultrasonic exposure
- o Solderability compatible with JEDEC J-STD-020C Pb-free process, 260°C peak reflow temperature
- o This product complies with EU directive 2002/95/EC (RoHS compliance)



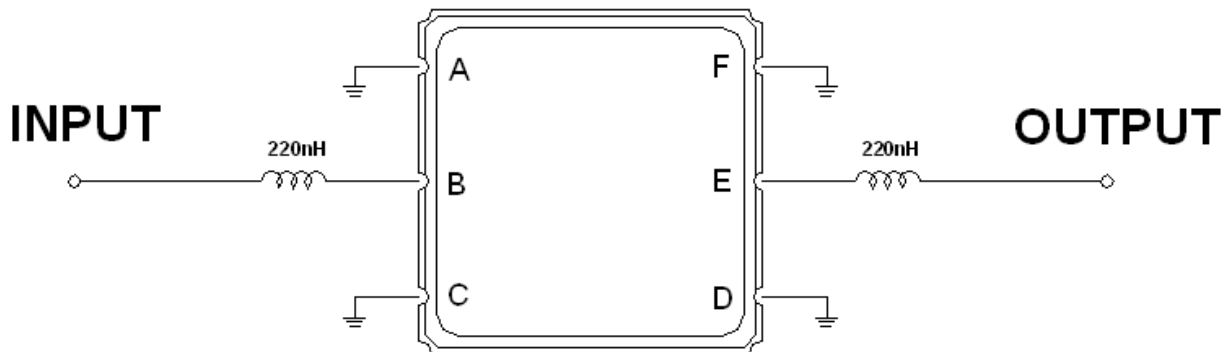


**Mechanical Dimensions (mm)**



| Pin Description |        |
|-----------------|--------|
| A, C, D, F      | Ground |
| B               | In     |
| E               | Out    |

**Test Circuit**



Source and Load Impedance: 50 Ω



### Maximum Ratings

| Parameters Description                         | Unit | Minimum | Typical | Maximum |
|--|------|---------|---------|---------|
| Operating Temperature Range                    | °C   | -10     | -       | +60     |
| Storage Temperature Range                      | °C   | -40     | -       | +85     |
| Maximum DC Voltage                             | V    | -       | -       | 0       |
| Maximum Input Power                            | dBm  | -       | -       | 10      |
| Source Impedance (single ended) <sup>(1)</sup> | Ω    | -       | 50      | -       |
| Load Impedance (single ended) <sup>(1)</sup>   | Ω    | -       | 50      | -       |

Notes: With matching network (Ref. Testing Environment Circuit as shown above)

### Electrical Specification

| Parameters Description               | Unit | Minimum | Typical | Maximum |
|--------------------------------------|------|---------|---------|---------|
| Center Frequency (Fo)                | MHz  | -       | 243.95  | -       |
| Insertion Loss at Fo                 | dB   | -       | 3.2     | 4.0     |
| Amplitude Ripple within Fo±100 KHz   | dB   | -       | 0.9     | 1.5     |
| Group Delay Ripple within Fo±100 KHz | μsec | -       | -       | 1.2     |
| Attenuation:                         |      |         |         |         |
| Fo – 23 MHz                          | dB   | 55      | 61      | -       |
| Fo - 1.2 MHz                         | dB   | 40      | 54      | -       |
| Fo – 600 KHz                         | dB   | 30      | 37      | -       |
| Fo + 600 KHz                         | dB   | 30      | 40      | -       |
| Fo + 1.2 MHz                         | dB   | 40      | 46      | -       |
| Fo + 23 MHz                          | dB   | 55      | 57      | -       |



### Frequency Performance

