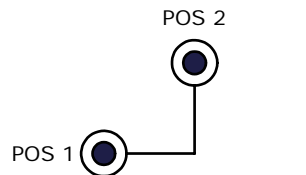


NOTES:

1. ALL DIMENSIONS IN MM [INCH].
2. GENERAL TOLERANCE: X.X=±0.4  
X.XX=±0.25
3. TERM. NOS. FOR REFERENCE ONLY.
- ▲ 4. RATING: 1A @125VAC, 0.5A @250VAC
5. CONTACT RESISTANCE: 20 mΩ MIN
6. DIELECTRIC STRENGTH: 1500 VAC-1 MINUTE
7. INSULATION RESISTANCE: 200 MΩ MIN
8. MATERIALS:  
HOUSING: ZINC ALLOY DIE CAST  
CYLINDER: ZINC ALLOY W/CHROME PLATING  
TERMINAL AND CONTACTS: SILVER PLATED  
KEYS (2), KEY CODE 102: TUBULAR ZINC ALLOY W/CHROME PLATING
9. 2002/95/EC (ROHS) COMPLIANT.
10. ROHS CERTIFICATE OF COMPLIANCE TO BE SHIPPED WITH EACH LOT.
11. ▲ DENOTES CRITICAL PARAMETER



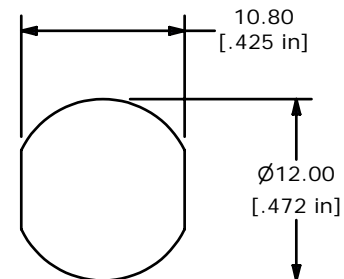
CIRCUIT: SPST  
CONTACT CONFIGURATION

90° INDEXING

SWITCH FUNCTION	
POS 1	POS 2
←	↑
OFF	1-2

LEGEND

● = INDICATES KEY PULL POSSIBLE



RECOMMENDED PANEL CUTOUT



TITLE KO106A-102, 2.8 INCH WIRE ASSEMBLY

A	18494	RELEASED WITH MOLEX CONN.	4/22/09	BLR
REV	PCR NO	DESCRIPTION	DATE	BY

SCALE	DATE	DR	DWG	REV
1.5:1	4/22/2009	BLR	XK0093P	A

THE INFORMATION CONTAINED IN THIS DOCUMENT IS PROPRIETARY TO E-SWITCH AND IS NOT TO BE COPIED OR TRANSFERRED