

### NEW! EVP-AN, EVQ-9P7, ESE-31 Series

#### Light Touch and Detector Switches

Six New and Expanded Electromechanical Series (continued on back side)

Panasonic, a worldwide leader in Electromechanical Products, is pleased to introduce new and expanded Light Touch and Detector Switch Series to our already outstanding Electromechanical product line. Target markets include Portable Electronics, Telecommunication, Medical Devices and Mobile Phones. RoHS compliant.

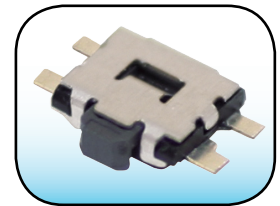
#### EVP-AN 3.5 x 2.9mm Side-Operational Half Dive Switch

NEW!

##### Ultra-Durable Edge-Mounting Design

Clever switch design penetrates into PCB, allowing slimmer application profile and increased mounting strength!

- Overall Switch Height - 1.2mm
- Effective Height from PCB - 0.7mm
- Strong Mounting Strength



#### EVQ-9P7 3.5 x 2.9mm Side-Operational Light Touch Switch

Line Ext.

##### Unique, Ultra-Durable Edge-Mounting Design

Improved soldering strength in push direction!

- Effective Height: 1.35mm
- High Operational Life - 100,000 Cycles
- Now with 1.6N Push Force



#### ESE-31 1.7mm Detector Switch

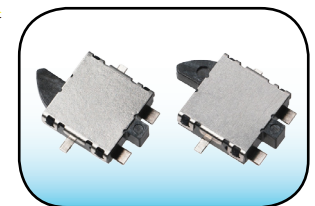
Line Ext.

Halogen-Free

##### More Versatility In Detection!

With both left-to-right and right-to-left options, the ESE-31 Series allows actuation from both directions.

- Slim Body Profile - 1.7mm
- High Mounting Strength: 80 N
- Multiple Actuation Methods
- Now Halogen-Free



For detailed specification information on these new and expanded Light Touch and Detector Switches visit:

- [panasonic.com/industrial/components/pdf/EVP-AN\\_DataSheet.pdf](http://panasonic.com/industrial/components/pdf/EVP-AN_DataSheet.pdf)
- [panasonic.com/industrial/components/pdf/EVQ-9P7\\_DataSheet.pdf](http://panasonic.com/industrial/components/pdf/EVQ-9P7_DataSheet.pdf)
- [panasonic.com/industrial/components/pdf/ESE-31\\_DataSheet.pdf](http://panasonic.com/industrial/components/pdf/ESE-31_DataSheet.pdf)

Website: [panasonic.com/industrial/electronic-components/electromechanical/index.aspx](http://panasonic.com/industrial/electronic-components/electromechanical/index.aspx)

**Panasonic ideas for life**

### NEW! EVP-AE, EVP-AF and EVP-AJ Series

#### Light Touch and Detector Switches

##### Six New and Expanded Electromechanical Series

Panasonic, a worldwide leader in Electromechanical Products, is pleased to introduce new and expanded Light Touch and Detector Switch Series to our already outstanding Electromechanical product line. Target markets include Portable Electronics, Telecommunication, Medical Devices and Mobile Phones. RoHS compliant.

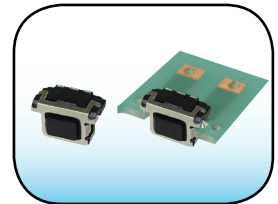
#### EVP-AE 4.5 x 2.2mm Side-Operational Switch

Line Ext.

##### Unique, Ultra-Durable Edge-Mounting Design

Improved soldering strength in push direction!

- Long Operational Life - 200,000 Cycles
- Height from PCB - 0.95mm
- ESD Protected
- Now with 20% Improved Peel Off Strength



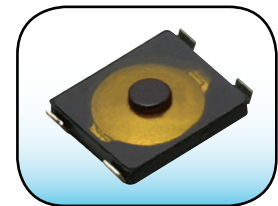
#### EVP-AF 3.0 x 2.6mm Light Touch Switch

Line Ext.

##### Ultra-Miniaturized, Ultra-Thin Design!

Small form factor allows more PCB real estate and slimmer application profile.

- Paper Thin Height - 0.65mm
- Equipped with Actuator for Assuring Click Feel
- Now with More Push Force Options - 1.6N and 2.4N Added to the Existing 3.4N
- ESD Protection Option Available



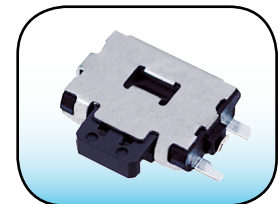
#### EVP-AJ Double-Action Side Operational Switch

Line Ext.

##### Durable, Super-Slim Design!

High mounting strength of 80N for impact resistance.

- Slim Body Profile - 1.7mm
- Double Action with Two Actuation Steps
- Now Available with Straight Terminals
- ESD Protected



For detailed specification information on these new and expanded Light Touch and Detector Switches visit:

- [panasonic.com/industrial/components/pdf/EVP-AE\\_DataSheet.pdf](http://panasonic.com/industrial/components/pdf/EVP-AE_DataSheet.pdf)
- [panasonic.com/industrial/components/pdf/EVP-AF\\_DataSheet.pdf](http://panasonic.com/industrial/components/pdf/EVP-AF_DataSheet.pdf)
- [panasonic.com/industrial/components/pdf/EVP-AJ\\_DataSheet.pdf](http://panasonic.com/industrial/components/pdf/EVP-AJ_DataSheet.pdf)

Website: [panasonic.com/industrial/electronic-components/electromechanical/index.aspx](http://panasonic.com/industrial/electronic-components/electromechanical/index.aspx)

**Panasonic ideas for life**