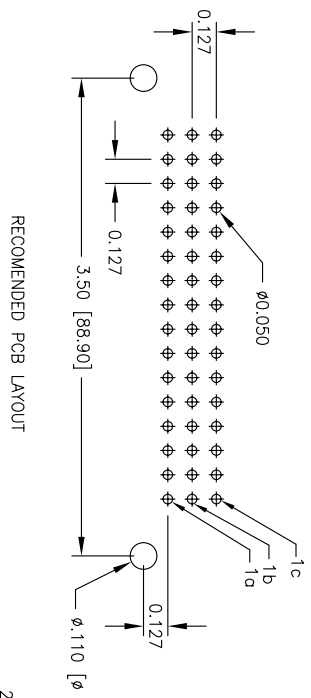
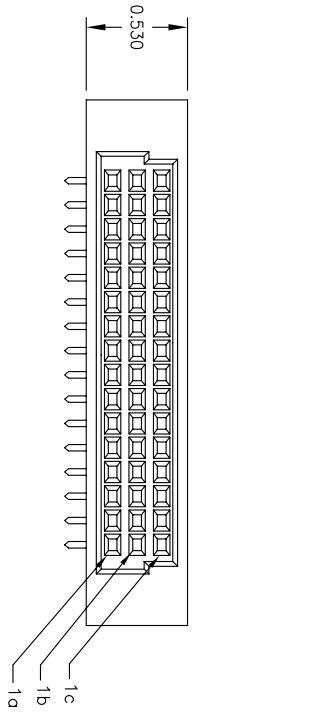


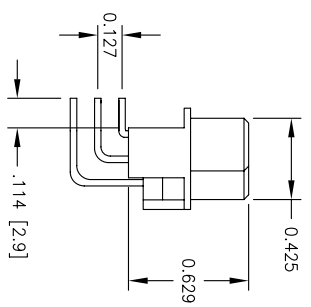
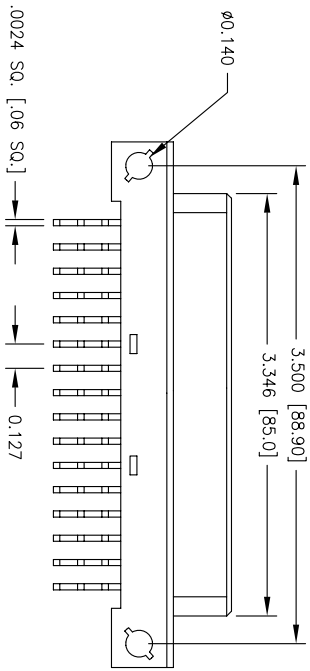
Rev	AWO #	Description	Date	Appr
-		RELEASED	03/6/07	

APPROVED: \_\_\_\_\_  
 DATE: \_\_\_\_\_ TITLE: \_\_\_\_\_



RECOMMENDED PCB LAYOUT

2:8]



"X"	PLATING	CLASS
1	30 u" Gold	1
2	15 u" Gold	2
3	Gold Flash	3

**SPECIFICATIONS:**

**Material:**  
 Insulator: PBT, glass reinforced, rated UL 94V-0

**Contacts color:** Beige

**Contacts:** Phosphor Bronze

**Plating:**  
 Gold over Nickel underplate on contact area, Tin over Copper underplate on solder tails.

(See chart for thickness)

**Electrical:**

Operating voltage: 500 VAC max

Current rating: 2 Amps max

Contact resistance: 30 mohms max

Insulation resistance: 1000 Mohms min

Dielectric withstanding voltage: 1000 VAC for 1 minute

Operating temperature: -55C to +125C

Environmental:

Lead free, RoHS compliant.

Recommended soldering temp: 235°C for 5 sec.



UNLESS OTHERWISE SPECIFIED  
 ALL DIMENSIONS ARE INCHES [MM]  
 TOLERANCES: EXCEPT AS NOTED  
 INCHES: .X ± .10 Ø.X ± .10  
 .XX ± .020 Ø.XXX ± .015  
 .XXX ± .015 Ø.XXXX ± .010

**ADAM TECH**  
 909 Ratway Avenue, Union, NJ 07083  
 Phone: 908-687-5000 Fax: 908-687-5710

APPROVALS	DATE
DRAWN	BW
CHECKED	
APPROVED	

TITLE	DIN TYPE 1/2 R FEMALE, 48 PIN, 3 ROW RIGHT ANGLE
SIZE	PART NO.
REF:	DIN-48-FR-S33-A1CX
SCALE:	NTS
SHEET	1 OF 1