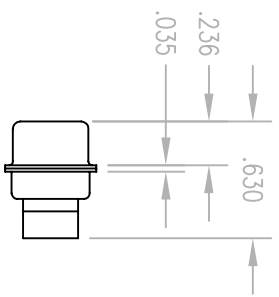
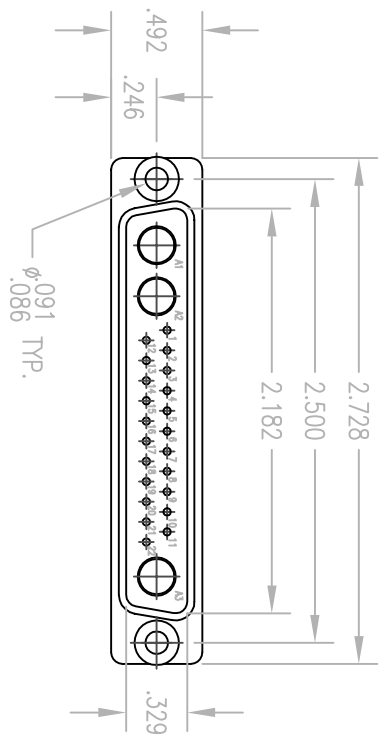
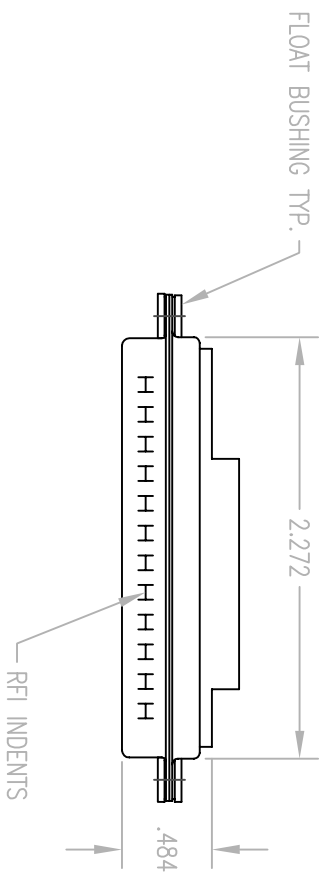


REV.	DESCRIPTION	DATE	BY	APPD.
B	RELEASED PER NPR 1664A	02/29/00	ET	



- NOTES:
1. MATERIALS:
SHELL AND BUSHINGS: STEEL PER ASTM A568
INSULATOR: GLASS FILLED POLYESTER
 2. FINISH:
SHELL AND BUSHINGS: TIN PLATE PER ASTM B545
INSULATOR: BLACK
 3. CONTACT ARRANGEMENT:
(22) SIGNAL CONTACTS (NOT SUPPLIED)
(3) COAX OR POWER CONTACTS (NOT SUPPLIED)

PER ASME Y14.5M-1994
UNLESS OTHERWISE SPECIFIED:
TOLERANCES ARE IN INCHES (MIL)
DIMENSIONS: .XX ± .01/0.254
DECIMALS: .XXX ± .005/0.127
ANGLES: ± Z'
SCALE: 1:1

Liton
Winchester/Reticon
400 Park Road
Waterford, Connecticut 06795

CUSTOMER DRAWING		TITLE	
DRAWN	DATE	CHECKED	DATE
JMH	2/9/00	KJT	02/04/00
APPROVED	DATE	APPROVED	DATE
JMC	02/09/00	JED	02/03/00
A		A	
RP25W3P-12-TD		RP25W3P-12-TD	
SMT.	OF	SMT.	OF
1	1	1	1
REV.		REV.	
B		B	