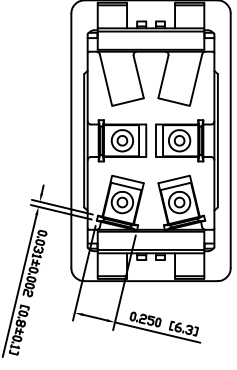
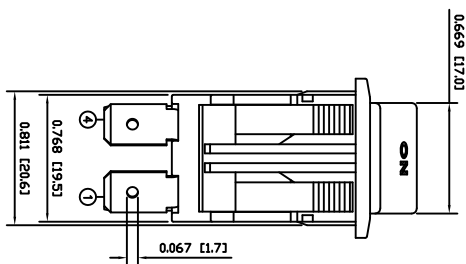
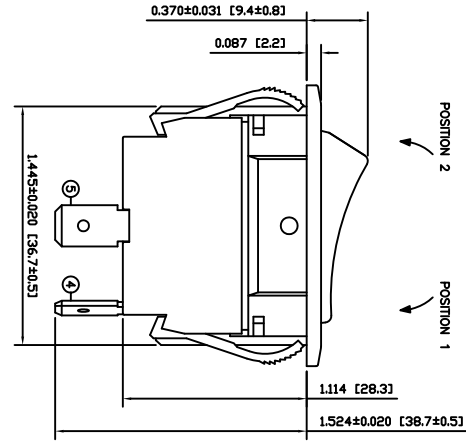


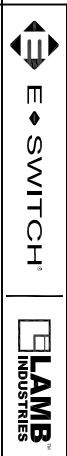
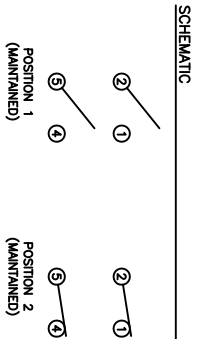
SUGGESTED PANEL CUTOUT

MATERIALS
 BODY: Polyamide 6/6 (PA66), UL94 V-2
 ACTUATOR: Polyamide 6/6 (PA66), UL94 V-2
 SEALING MEMBRANE: Polyvinyl Chloride (PVC)
 SPRING: Phoro Wire
 MOBILE CONTACT BAR: Copper
 CONTACT PADS: Silver Clad Copper
 RIFETS: Copper
 TERMINALS: Brass

SPECIFICATIONS
 FUNCTION: 2PTT OFF-ON
 RATINGS:
 ANSI/UL 508 and CAN/CSA 222.2 No.14 (E198908):
 20A 125VAC [cUlFuq]
 15A 277VAC [cUlFuq]
 2HP 110/250VAC [cUlFuq]
 CONTACT RESISTANCE:
 Initial: 10mΩ Max.
 ELECTRICAL LIFE:
 6,000 Cycles [cUlFuq]
 TEMPERATURE:
 Operating: 0°C to 40°C [cUlFuq]
 INGRESS PROTECTION:
 IP54
 APPROVALS:
COMPLIANT



COLORS AND MARKINGS
 BODY COLOR: Black
 ACTUATOR COLOR: Red
 MARKING: ON/OFF Vertical (3)
 MARKING COLOR: White



RWW42D1923

DIMENSIONS
 INCHES [MILLIMETERS]
 GENERAL TOLERANCES ±0.008 [±0.2] / ±1'
 SCALE DRAWING NOT TO SCALE
 PROJECTION DRAWING NUMBER 34-RWW42D1923

ACTUATOR BODY COLORS	REV.	DATE	BY
B	10/09/28	CAB	
A	09/08/24	CAB	
C	10/03/07	CAB	

THE INFORMATION CONTAINED IN THIS DOCUMENT IS PROPRIETARY TO E-SWITCH AND IS NOT TO BE COPIED OR TRANSMITTED

CONNECTED SPECIFICATIONS	REV.	DATE	BY
INITIAL RELEASE	A		
DESCRIPTION	B		

DATE	REVISION
DECEMBER 9, 2009	B