

SWITCHING Diodes

SOD-923

• Applications

High speed switching

• Features

- 1) Extremely small surface mounting type.
- 2) High Speed.
- 3) High reliability.

• Construction

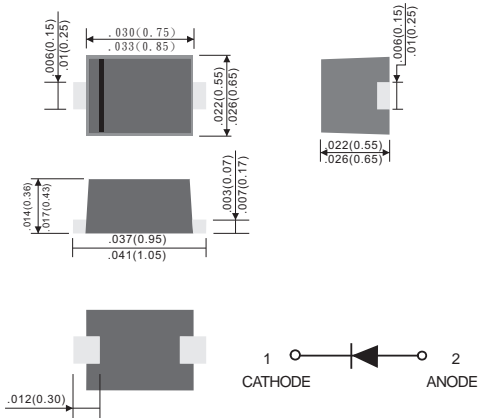
Silicon epitaxial planar

Pb-Free package is available

RoHS product for packing code suffix "G"

Halogen free product for packing code suffix "H"

Moisture Sensitivity Level 1



Dimensions in inches and (millimeters)

Marking code: 3'cf'+

Maximum Ratings and Electrical Characteristics, Single Diode @T_A=25

Parameter		Limits	Unit
Peak reverse voltage	V _{RM}	90	V
DC reverse voltage	V _R	80	V
Peak forward current	I _{FM}	225	mA
Mean rectifying current	I _O	100	mA
Surge current (1s)	I _{surge}	500	mA
Junction temperature	T _j	125	
Operating/Storage temperature	T _{stg}	-55~+125	

Electrical Ratings @T_A=25

Parameter	Symbol	Min.	Typ.	Max.	Unit	Conditions
Forward voltage	V _F			1.2	V	I _F =100mA
Reverse current	I _R			0.1	μA	V _R =80V
Capacitance between terminals	C _T			3.0	pF	V _R =0.5V,f=1MHZ
Reverse recovery time	t _{rr}			4	ns	V _R =6V,I _F =10mA,R _L =100



ELECTRICAL CHARACTERISTIC CURVES ($T_a = 25^\circ\text{C}$)

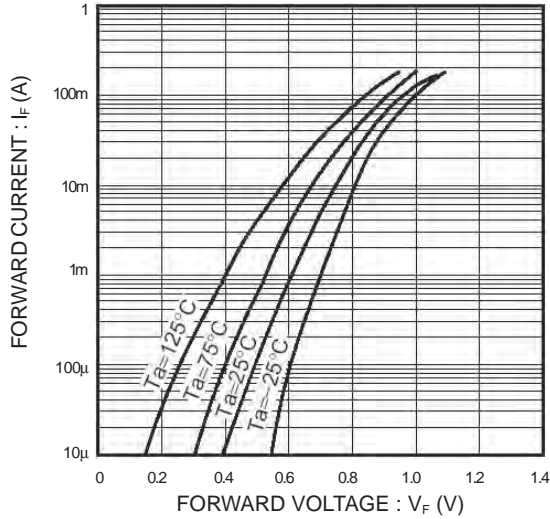


Fig.1 Forward characteristics

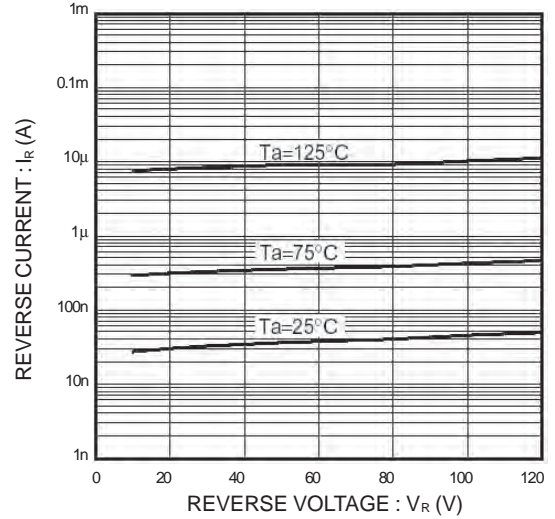


Fig.2 Reverse characteristics

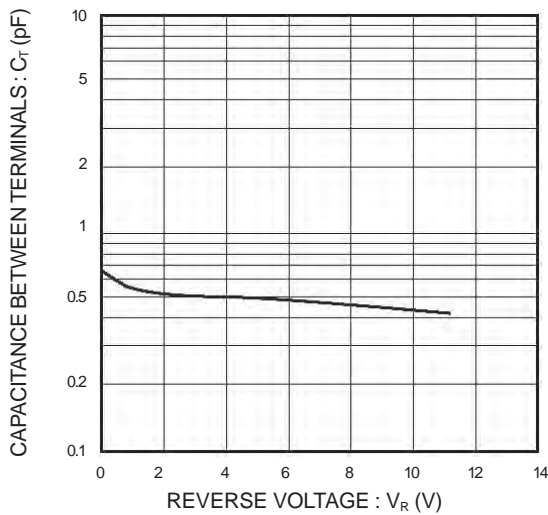


Fig.3 Capacitance between terminals

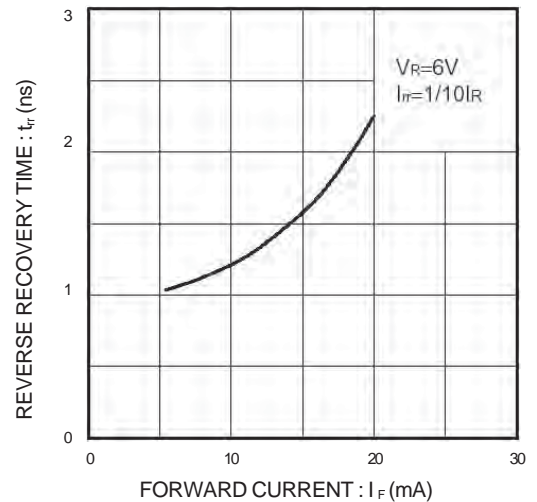


Fig.4 Reverse recovery time characteristics

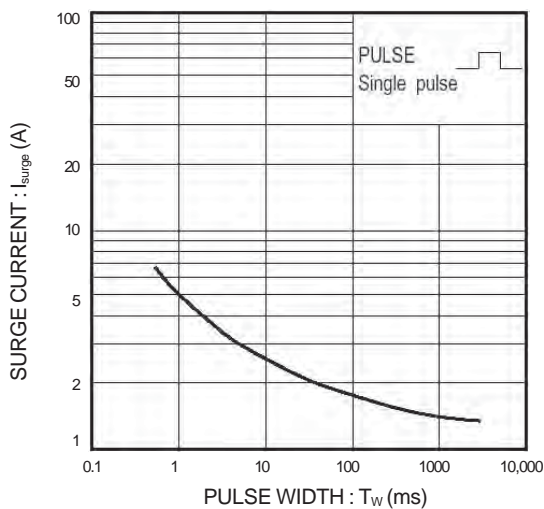


Fig.5 Surge current characteristics

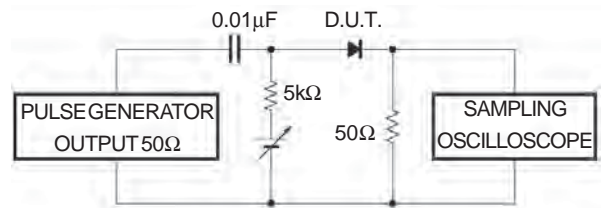


Fig.6 Reverse recovery time (t_{rr}) measurement circuit



WILLAS



1SS400CST5

Ordering Information:

Device PN	Packing
1SS400CST5 ⁽¹⁾ -WS	Tape&Reel: 8 Kpcs/Reel

Note: (1) RoHS product for packing code suffix "G" ; Halogen free product for packing code suffix "H"

Disclaimer

WILLAS reserves the right to make changes without notice to any product specification herein, to make corrections, modifications, enhancements or other changes. WILLAS or anyone on its behalf assumes no responsibility or liability for any errors or inaccuracies. Data sheet specifications and its information contained are intended to provide a product description only. "Typical" parameters which may be included on WILLAS data sheets and/ or specifications can and do vary in different applications and actual performance may vary over time. WILLAS does not assume any liability arising out of the application or use of any product or circuit.

WILLAS products are not designed, intended or authorized for use in medical, life-saving implant or other applications intended for life-sustaining or other related applications where a failure or malfunction of component or circuitry may directly or indirectly cause injury or threaten a life without expressed written approval of WILLAS. Customers using or selling WILLAS components for use in such applications do so at their own risk and shall agree to fully indemnify WILLAS Inc and its subsidiaries harmless against all claims, damages and expenditures.